



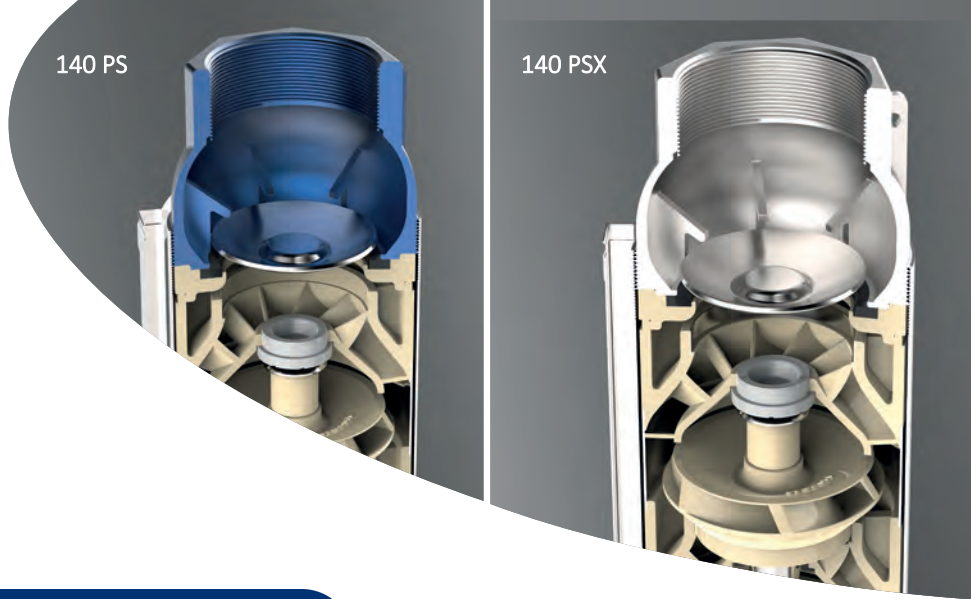
## 6" Floating Impeller Submersible Pumps

---

Made in Italy



Catalogo 60 Hz



maximum  
50 gr/m<sup>3</sup>



## 6" 140 PS/PSX - HIGH CAPACITY SUBMERSIBLE PUMP WITH SEMIAXIAL IMPELLER

### 140PS

*Impeller in Noryl, Diffuser in Noryl, Intermediate casing and external sleeve in AISI 304, Delivery bowl and suction cage in cast iron*

### 140PSX

*Impeller in Noryl, Diffuser in Noryl, Intermediate casing and external sleeve in AISI 304, Delivery bowl and suction cage in Stainless steel AISI 304*

*Maximum sand content: 50 gr/m<sup>3</sup>*

*High capacity: 54 m<sup>3</sup>/h – 900 l/min*

STAGE



140 PSX



6" PR / PS - 23

**ELECTRIC SUBMERSIBLE PUMPS CASED VERSION 6" (SERIES 140 PS N - 140 PSX N) 140 PS / 140 PSX** are high efficiency semiaxial pumps suitable for clean water applications such as civil and industrial water supply, booster systems, firefighting systems, irrigation and water networks.

#### **ADVANTAGES**

Very compact pump, heavy duty construction easy assembly and disassembly, high performances. Pump fitted with low friction counter thrust for longer impeller life.

#### **MATERIALS**

Impellers and diffusers in GFN2 Noryl, AISI 304 stainless steel intermediate element, sleeve, strainer and screws.

Suction cage and delivery bowl in cast iron for 140 PS version, Suction cage and delivery bowl in AISI 304 stainless steel for 140 PSX version. Counter thrust in PTFE + 25% graphite.

#### **HYDRAULIC PERFORMANCES**

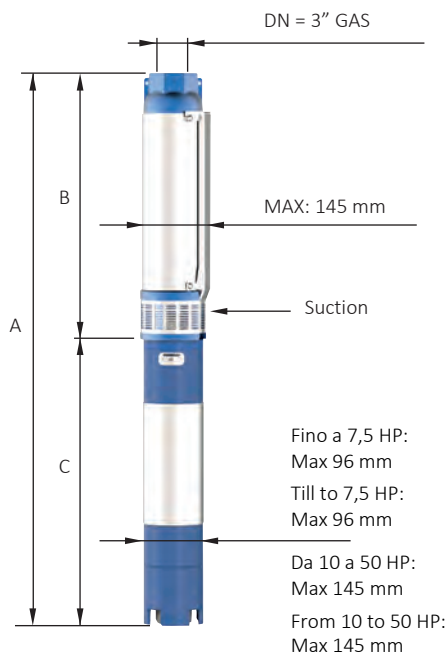
Capacity up to 54 m<sup>3</sup>/h and HMT up to 390 m. Motor power up to 37 kW-50 HP.

Maximum sand tolerance: 50 g/m<sup>3</sup>



**6" 140 PS / PSX 36 - HYDRAULIC PERFORMANCES**
**SERVICE FACTOR : 1,15**

Motor - 3450 rpm				Q= Capacity						
Type	Power		V 460	l/min	0	360	480	600	720	840
				l/sec	0,00	6,00	8,00	10,00	12,00	14,00
	kW	HP	A	m³/h	0,0	21,6	28,8	36,0	43,2	50,4
140 PS 36 N/02	4,00	5,5	6,8	H[m]	35	29	27	24	21	17
140 PS 36 N/03	5,50	7,5	10,8		53	43	40	36	31	25
140 PS 36 N/05	7,50	10	15,1		88	71	67	61	52	41
140 PS 36 N/06	9,20	12,5	18,1		106	86	80	73	62	50
140 PS 36 N/07	11,00	15	21,1		123	100	94	85	73	58
140 PS 36 N/09	13,00	17,5	24,1		159	128	121	109	93	74
140 PS 36 N/10	15,00	20	27,5		176	143	134	121	104	83
140 PS 36 N/13	18,50	25	34,4		229	185	174	157	135	108
140 PS 36 N/15	22,00	30	40,9		265	214	201	182	156	124
140 PS 36 N/18	26,00	35	47,3		318	257	241	218	187	149
140 PS 36 N/21	30,00	40	53,8		370	299	281	254	218	174
140 PS 36 N/26	37,00	50	67,1		459	371	348	315	270	215

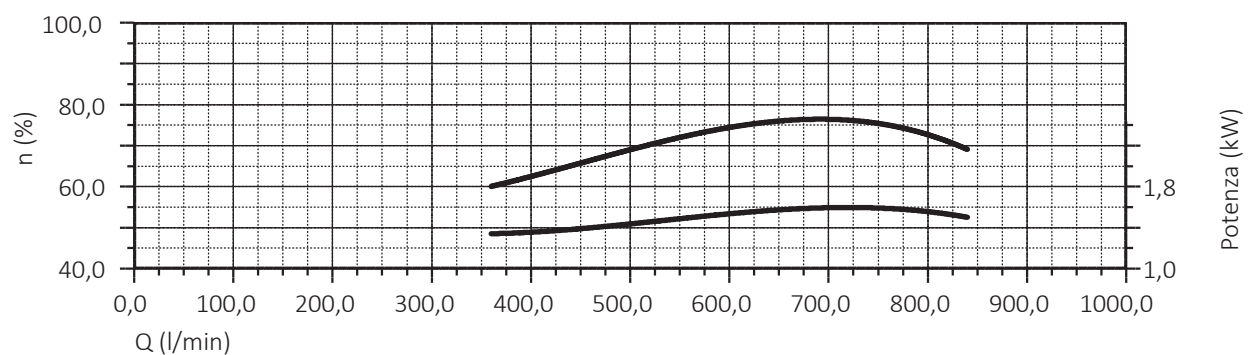
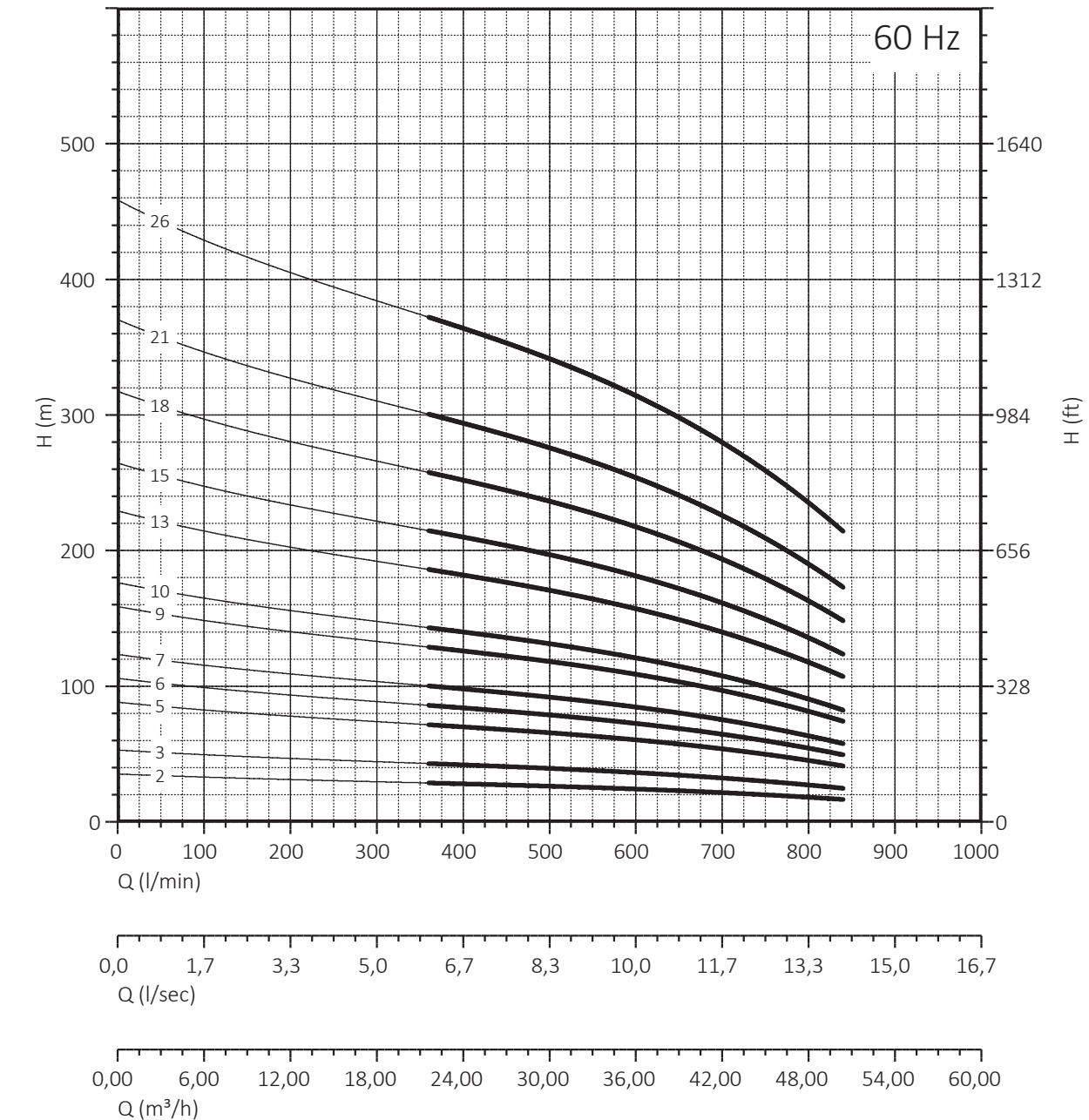


Overall dimensions and weights					
Type	A mm Tri	B mm	C mm Tri	M kg Tri	P kg
140 PS 36 N/02	1069	472	597	22	13
140 PS 36 N/03	1266	568	698	27	14
140 PS 36 N/05	1461	760	701	55	15,5
140 PS 36 N/06	1607	856	751	60	16
140 PS 36 N/07	1763	952	811	65	17,5
140 PS 36 N/09	1985	1144	841	70	19
140 PS 36 N/10	2171	1240	931	75	21
140 PS 36 N/13	2519	1528	991	83	25
140 PS 36 N/15	2791	1720	1071	92	27
140 PS 36 N/18	3189	2008	1181	100	29
140 PS 36 N/21	3547	2296	1251	108	32
140 PS 36 N/26	4117	2776	1341	118	35


**140 PSX**
*Suction cage and delivery bowl  
(with cap valve) in AISI 304 casted*
**n% = Pump efficiency  
kW/st = Stage absorption**
**Max 76,3%  
Max 1,60**

6" 140 PS / PSX 36 - HYDRAULIC PERFORMANCES

SERVICE FACTOR : 1,15

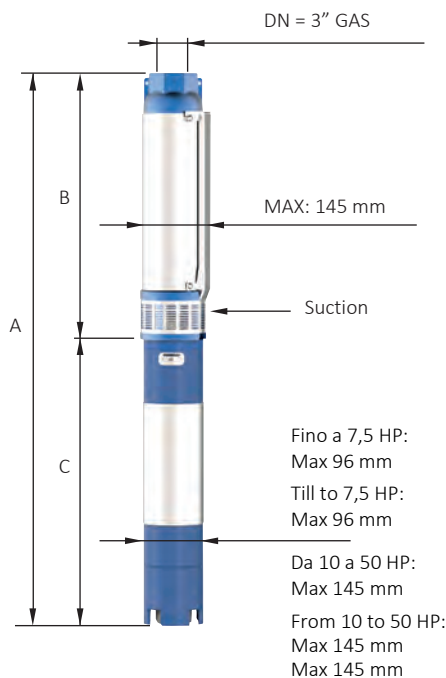


NPSH (m)	25%	50%	75%	100%
140 PS36 - 140 PSX36	3,4	3,4	4	6

## 6" 140 PS / PSX 42 - HYDRAULIC PERFORMANCES

SERVICE FACTOR : 1,15

Motor 3450 rpm				Q= Capacity							
Type	Power		V 460	l/min	0	480	600	720	840	960	1080
	kW	HP	A	l/sec	0,00	8,00	10,00	12,00	14,00	16,00	18,00
				m <sup>3</sup> /h	0,0	28,8	36,0	43,2	50,4	57,6	64,8
140 PS 42 N/02	4,00	5,5	6,5	H[m]	33	28	26	25	22	18	14
140 PS 42 N/03	5,50	7,5	10,8		50	42	40	37	32	27	22
140 PS 42 N/04	7,50	10	15,1		66	56	53	49	43	37	29
140 PS 42 N/05	9,20	12,5	18,1		83	70	66	61	54	46	36
140 PS 42 N/06	11,00	15	21,1		99	84	79	74	65	55	43
140 PS 42 N/07	13,00	17,5	24,1		116	98	92	86	76	64	50
140 PS 42 N/08	15,00	20	27,5		132	112	106	98	87	73	58
140 PS 42 N/10	18,50	25	34,4		165	140	132	123	108	92	72
140 PS 42 N/12	22,00	30	40,9		198	168	158	147	130	110	86
140 PS 42 N/14	26,00	35	47,3		231	196	185	172	151	128	101
140 PS 42 N/16	30,00	40	53,8		264	224	211	196	173	146	115
140 PS 42 N/20	37,00	50	67,1		330	280	264	245	216	183	144



Overall dimensions and weights					
Type	A mm Tri	B mm	C mm Tri	M kg Tri	P kg
140 PS 42 N/02	1069	472	597	22	13
140 PS 42 N/03	1266	568	698	27	14
140 PS 42 N/04	1365	664	701	55	15,5
140 PS 42 N/05	1511	760	751	60	16
140 PS 42 N/06	1667	856	811	65	17,5
140 PS 42 N/07	1793	952	841	70	19
140 PS 42 N/08	1979	1048	931	75	21
140 PS 42 N/10	2231	1240	991	83	25
140 PS 42 N/12	2503	1432	1071	92	27
140 PS 42 N/14	2805	1624	1181	100	29
140 PS 42 N/16	3067	1816	1251	108	32
140 PS 42 N/20	3541	2200	1341	118	35



### 140 PSX

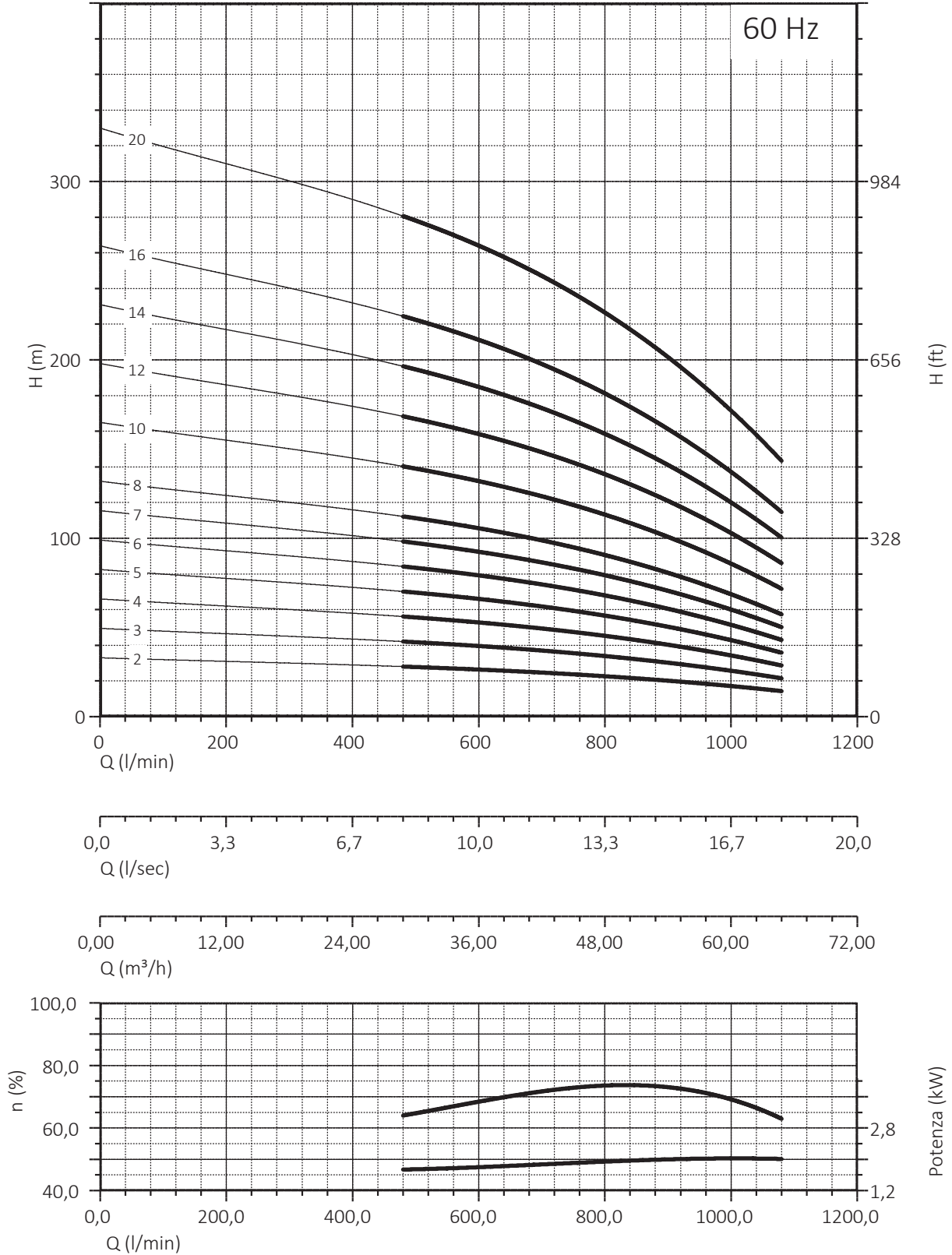
Suction cage and delivery bowl  
(with cap valve) in AISI 304 casted

n% = Pump efficiency  
kW/st = Stage absorption

**Max 74%**  
**Max 2,04**

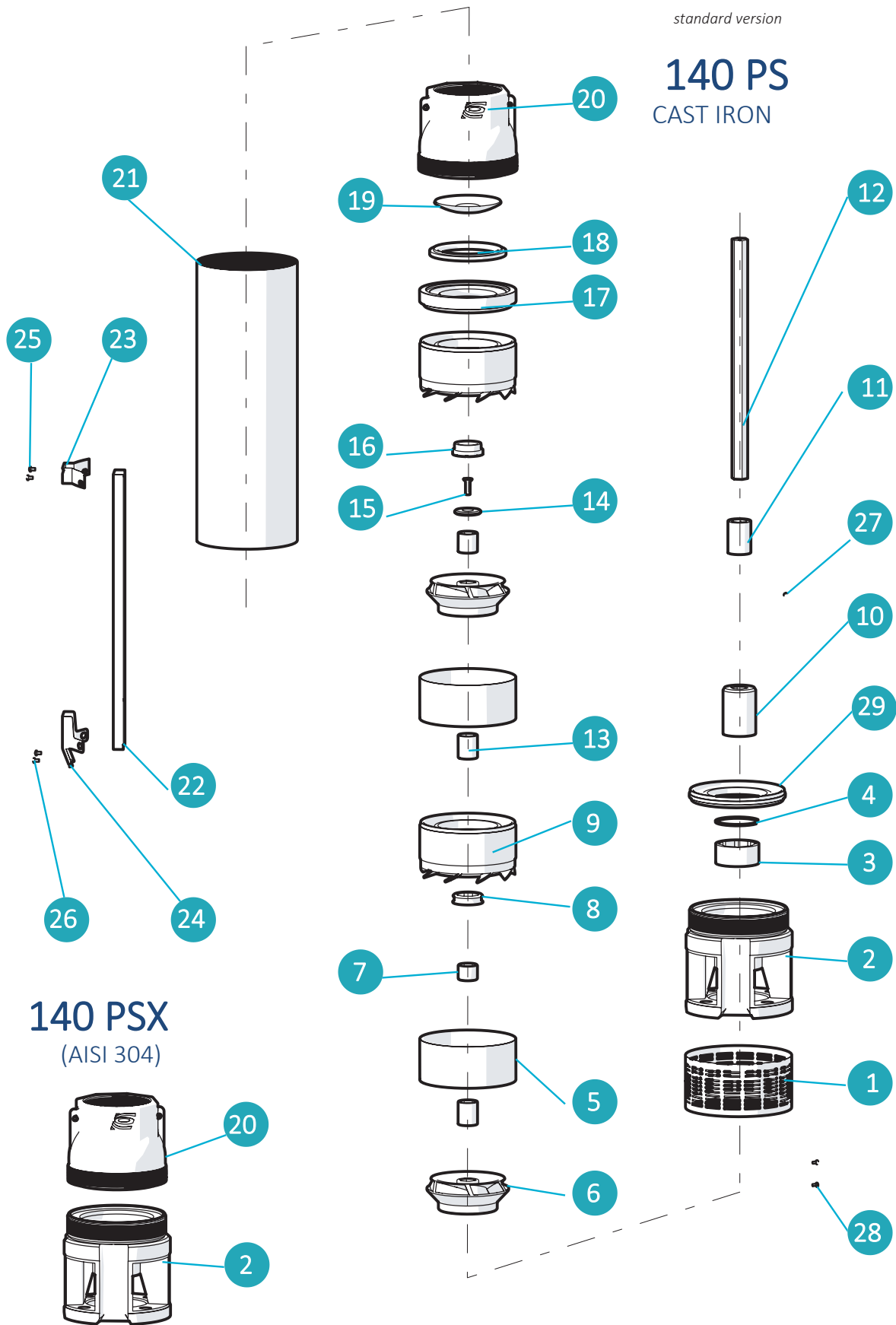
6" 140 PS / PSX 42 - HYDRAULIC PERFORMANCES

SERVICE FACTOR : 1,15



NPSH (m)	25%	50%	75%	100%
140 PS 42 - 140 PSX 42	3,4	3,6	4,5	6,5

SPARE PARTS - 6" 140 PS / PSX





**SPARE PARTS - 6" 140 PS / PSX**

<b>140 PS</b>				
<b>N.CODE</b>	<b>DESCRIZIONE (Italiano)</b>	<b>MATERIALE (Italiano)</b>	<b>DESCRIPTION (English)</b>	<b>MATERIAL (English)</b>
1	SUCCHERUOLA	ACCIAIO INOX AISI 304	SUCTION STRAINER	AISI 304
2 *	GABBIA DI ASPIRAZIONE	GHISA	SUCTION CAGE	CAST IRON
3	BRONZINA PER GABBIA	GOMMA	BEARING BUSH FOR SUCTION CAGE	RUBBER NBR
4	SEEGER BRONZINA	ACCIAIO INOX AISI 304	SEEGER BEARING BUSH	AISI 304
5	ELEMENTO INTERMEDIO	ACCIAIO INOX AISI 304	INTERMEDIATE CASING	AISI 304
6	GIRANTE	NORYL GFN2	IMPELLER	NORYL GFN2
7	DISTANZIATORE INTERMEDIO	ACCIAIO INOX AISI 304	INTERMEDIATE SPACER	AISI 304
8	BRONZINA DIFFUSORE	GOMMA	DIFFUSER BEARING BUSH	RUBBER NBR
9	DIFFUSORE	NORYL GFN2 + ACCIAIO INOX AISI 304	DIFFUSER	NORYL GFN2 + RING AISI 304
10	GIUNTO DI TRAINO	ACCIAIO INOX AISI 304	JOINT	AISI 304
11	DISTANZIATORE PRIMA GIRANTE	NORYL GFN2	SPACER FIRST IMPELLER	NORYL GFN2
12	ALBERO POMPA	ACCIAIO INOX AISI 420	PUMP SHAFT	AISI 420
13	DISTANZIATORE	NORYL GFN2	SPACER	NORYL GFN2
14	DISCO ACCIAIO	ACCIAIO INOX AISI 304	RING	AISI 304
15	VITE	ACCIAIO INOX AISI 304	SCREW	AISI 304
16	CONTROSOSPENSIONE	PTFE+25%CARBONE	COUNTERTHRUST	PTFE+25%CARBON
17	ANELLO GUARNIZIONE MANDATA	NORYL GFN2	RING GASKET VALVE	NORYL GFN2
18	GUARNIZIONE FARFALLA	GOMMA	GASKET VALVE	RUBBER NBR
19	FARFALLA	ACCIAIO INOX AISI 304	CAP VALVE	AISI 304
20 *	MANDATA	GHISA	DELIVERY BOWL	CAST IRON
21	CAMICIA	ACCIAIO INOX AISI 304	SLEEVE	AISI 304
22	COPRICAPO	ACCIAIO INOX AISI 304	COVER CABLE	AISI 304
23	STAFFETTA SUPERIORE	ACCIAIO INOX AISI 304	UPPER FLANGE	AISI 304
24	STAFFETTA INFERIORE	ACCIAIO INOX AISI 304	LOWER FLANGE	AISI 304
25	N.2 VITI M4 X 10 PER STAFFETTA SUPERIORE	ACCIAIO INOX AISI 304	N.2 SCREW M4X10 FOR UPPER FLANGE	AISI 304
26	N.2 VITI M4 X 10 PER STAFFETTA INFERIORE	ACCIAIO INOX AISI 304	N.2 SCREW M4X10 FOR LOWER FLANGE	AISI 304
27	GRANO PER GIUNTO	ACCIAIO INOX AISI 304	SCREW	AISI 304
28	N.2 VITI M4 X 8 PER SUCCHERUOLA	ACCIAIO INOX AISI 304	N.2 SCREW M4X8 SUCTION STRAINER	AISI 304
29	ANELLO RACCORDO GABBIA	NORYL GFN2 + ACCIAIO INOX AISI 304	RING FOR SUCTION CAGE	NORYL GFN2 + RING AISI 304

<b>N.CODE</b>	<b>DESCRIPTION (Français)</b>	<b>MATÉRIEL (Français)</b>	<b>DESCRIPCIÓN (Español)</b>	<b>MATERIAL (Español)</b>
1	CREPINE	ACIER INOXYDABLE AISI 304	REJILLA	ACERO INOXYDABLE AISI 304
2 *	CAGE D'ASPIRATION	FORGE	CUERPO DE ASPIRACION	HIERRO FUNDIDO
3	BEARING BUSH POUR CAGE D'ASPIRATION	CAOUTCHOUC	COJINETE CUERPO DE ASPIRACION	GOMA NBR
4	SEEGER BEARING BUSH	ACIER INOXYDABLE AISI 304	SEEGER POR COJINETE	ACERO INOXYDABLE AISI 304 ACERO
5	ELEMENT INTERMEDIARE	ACIER INOXYDABLE AISI 304	ELEMENTO INTERMEDIO	INOXYDABLE AISI 304
6	ROUE	NORYL GFN2	IMPULSOR	NORYL GFN2
7	ENTRETOISE INTERMEDIARE	ACIER INOXYDABLE AISI 304	DISTANCIADOR INTERMEDIO	ACERO INOXYDABLE AISI 304
8	DIFFUSEUR BEARING BUSH	CAOUTCHOUC	COJINETE DIFUSOR	GOMA NBR
9	DIFFUSEUR	NORYL GFN2 + ACIER INOXYDABLE AISI 304	DIFUSOR	NORYL GFN2 + ACERO INOXYDABLE AISI 304
10	JOINT	ACIER INOXYDABLE AISI 304	ACOPLAMIENTO	ACERO INOXYDABLE AISI 304
11	ENTRETOISE PREMIERE ROUE	NORYL GFN2	DISTANCIADOR PRIMER IMPULSOR	NORYL GFN2
12	ARBRE POMPE	ACIER INOXYDABLE AISI 420	EJE DE BOMBA	ACERO INOXYDABLE AISI 420
13	ENTRETOISE	NORYL GFN2	DISTANCIADOR	NORYL GFN2
14	RING	ACIER INOXYDABLE AISI 304	ANILLO EN ACERO	ACERO INOXYDABLE AISI 304
15	VIS	ACIER INOXYDABLE AISI 304	TORNILLO	ACERO INOXYDABLE AISI 304
16	CONTRESUSPENSION	PTFE + 25% GRAPHITE	CONTRA-SUSPENSION	PTFE+25%CARBON
17	ANNEAU VALVE GASKET	NORYL GFN2	JUNTA PARA VALVULA	NORYL GFN2
18	BAGUE VALVE GASKET	CAOUTCHOUC	JUNTA VALVULA	GOMA NBR
19	PLAT	ACIER INOXYDABLE AISI 304	VALVULA	ACERO INOXYDABLE AISI 304
20 *	REFOULEMENT	FORGE	CUERPO DE IMPULSION	HIERRO FUNDIDO
21	CHEMISE	ACIER INOXYDABLE AISI 304	CAMISA	ACERO INOXYDABLE AISI 304
22	PROTECTION CABLE	ACIER INOXYDABLE AISI 304	PARACABLE	ACERO INOXYDABLE AISI 304
23	BRIDE SUPERIEURE	ACIER INOXYDABLE AISI 304	GRAPA SUPERIOR	ACERO INOXYDABLE AISI 304
24	BRIDE INFERIEURE	ACIER INOXYDABLE AISI 304	GRAPA INFERIOR	ACERO INOXYDABLE AISI 304
25	N.2 VIS M4X10 POUR BRIDE SUPERIEURE	ACIER INOXYDABLE AISI 304	N.2 TORNILLOS GRAPA SUPERIOR	ACERO INOXYDABLE AISI 304
26	N.2 VIS M4X10 POUR BRIDE INFERIEURE	ACIER INOXYDABLE AISI 304	N.2 TORNILLOS GRAPA INFERIOR	ACERO INOXYDABLE AISI 304
27	VIS	ACIER INOXYDABLE AISI 304	TORNILLO POR ACOPLAMIENTO	ACERO INOXYDABLE AISI 304
28	N.2 VIS M4X8 POUR CREPINE	ACIER INOXYDABLE AISI 304	N.2 TORNILLOS REJILLA	ACERO INOXYDABLE AISI 304
29	ANNEAU FOR CAGE D'ASPIRATION	NORYL GFN2 + ACIER INOXYDABLE AISI 304	ANILLO CUERPO DE ASPIRACION	NORYL GFN2 + ACERO INOXYDABLE AISI 304

**\* 140 PSX**

ACCIAIO INOX AISI 304  
AISI 304  
ACIER INOXYDABLE AISI 304 ACERO  
INOXYDABLE AISI 304

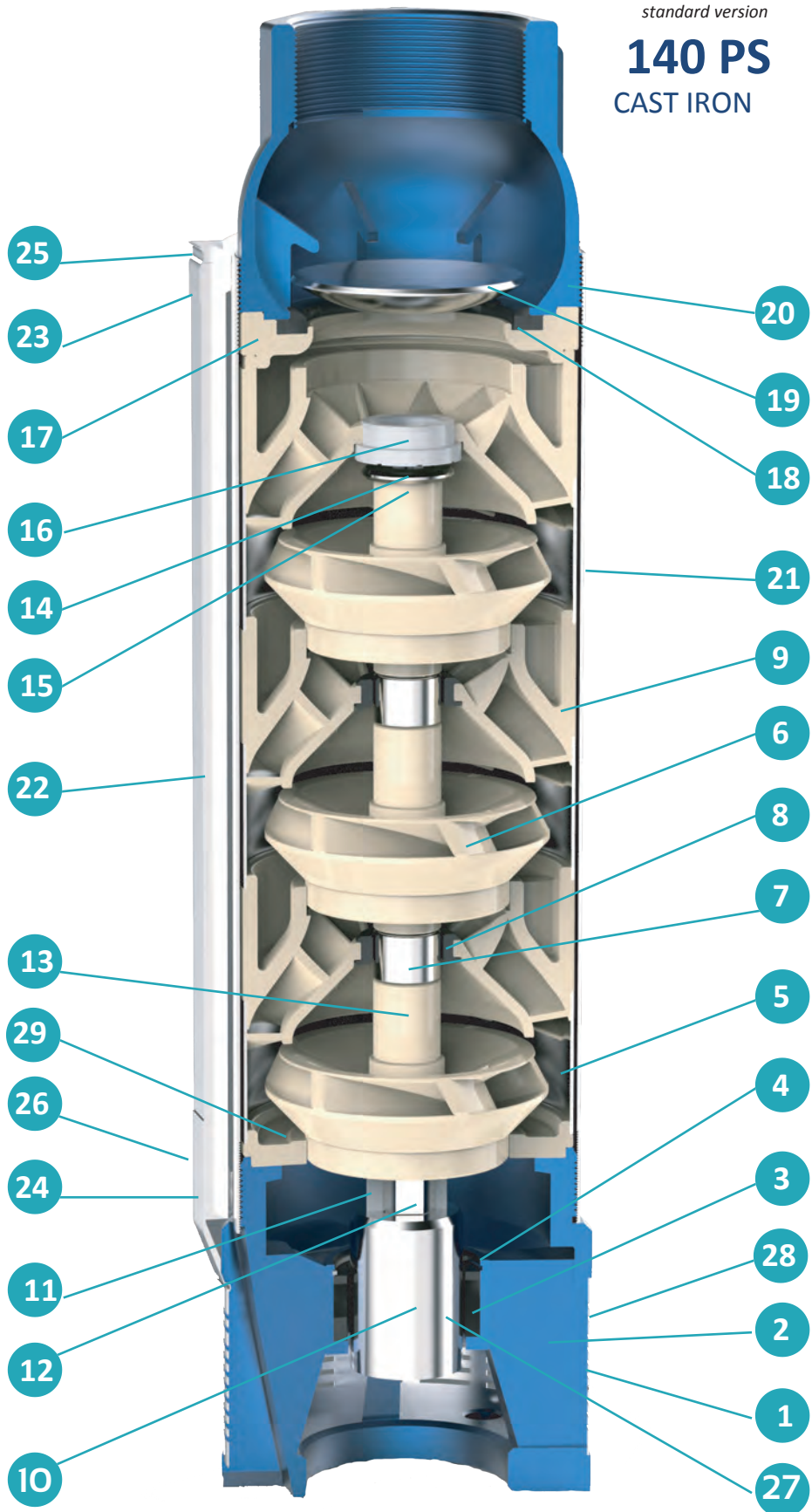
SPARE PARTS - 6" 140 PS / PSX

**140 PSX**  
(AISI 304)



versione standard  
standard version

**140 PS**  
CAST IRON



**SPARE PARTS - 6" 140 PS / PSX**

<b>140 PS</b>				
<b>N.CODE</b>	<b>DESCRIZIONE (Italiano)</b>	<b>MATERIALE (Italiano)</b>	<b>DESCRIPTION (English)</b>	<b>MATERIAL (English)</b>
1	SUCCHERUOLA	ACCIAIO INOX AISI 304	SUCTION STRAINER	AISI 304
2 *	GABBIA DI ASPIRAZIONE	GHISA	SUCTION CAGE	CAST IRON
3	BRONZINA PER GABBIA	GOMMA	BEARING BUSH FOR SUCTION CAGE	RUBBER NBR
4	SEEGER BRONZINA	ACCIAIO INOX AISI 304	SEEGER BEARING BUSH	AISI 304
5	ELEMENTO INTERMEDIO	ACCIAIO INOX AISI 304	INTERMEDIATE CASING	AISI 304
6	GIRANTE	NORYL GFN2	IMPELLER	NORYL GFN2
7	DISTANZIATORE INTERMEDIO	ACCIAIO INOX AISI 304	INTERMEDIATE SPACER	AISI 304
8	BRONZINA DIFFUSORE	GOMMA	DIFFUSER BEARING BUSH	RUBBER NBR
9	DIFFUSORE	NORYL GFN2 + ACCIAIO INOX AISI 304	DIFFUSER	NORYL GFN2 + RING AISI 304
10	GIUNTO DI TRAINO	ACCIAIO INOX AISI 304	JOINT	AISI 304
11	DISTANZIATORE PRIMA GIRANTE	NORYL GFN2	SPACER FIRST IMPELLER	NORYL GFN2
12	ALBERO POMPA	ACCIAIO INOX AISI 420	PUMP SHAFT	AISI 420
13	DISTANZIATORE	NORYL GFN2	SPACER	NORYL GFN2
14	DISCO ACCIAIO	ACCIAIO INOX AISI 304	RING	AISI 304
15	VITE	ACCIAIO INOX AISI 304	SCREW	AISI 304
16	CONTROSOSPENSIONE	PTFE+25%CARBONE	COUNTERTHRUST	PTFE+25%CARBON
17	ANELLO GUARNIZIONE MANDATA	NORYL GFN2	RING GASKET VALVE	NORYL GFN2
18	GUARNIZIONE FARFALLA	GOMMA	GASKET VALVE	RUBBER NBR
19	FARFALLA	ACCIAIO INOX AISI 304	CAP VALVE	AISI 304
20 *	MANDATA	GHISA	DELIVERY BOWL	CAST IRON
21	CAMICIA	ACCIAIO INOX AISI 304	SLEEVE	AISI 304
22	COPRICAPO	ACCIAIO INOX AISI 304	COVER CABLE	AISI 304
23	STAFFETTA SUPERIORE	ACCIAIO INOX AISI 304	UPPER FLANGE	AISI 304
24	STAFFETTA INFERIORE	ACCIAIO INOX AISI 304	LOWER FLANGE	AISI 304
25	N.2 VITI M4 X 10 PER STAFFETTA SUPERIORE	ACCIAIO INOX AISI 304	N.2 SCREW M4X10 FOR UPPER FLANGE	AISI 304
26	N.2 VITI M4 X 10 PER STAFFETTA INFERIORE	ACCIAIO INOX AISI 304	N.2 SCREW M4X10 FOR LOWER FLANGE	AISI 304
27	GRANO PER GIUNTO	ACCIAIO INOX AISI 304	SCREW	AISI 304
28	N.2 VITI M4 X 8 PER SUCCHERUOLA	ACCIAIO INOX AISI 304	N.2 SCREW M4X8 SUCTION STRAINER	AISI 304
29	ANELLO RACCORDO GABBIA	NORYL GFN2 + ACCIAIO INOX AISI 304	RING FOR SUCTION CAGE	NORYL GFN2 + RING AISI 304

<b>N.CODE</b>	<b>DESCRIPTION (Français)</b>	<b>MATÉRIEL (Français)</b>	<b>DESCRIPCIÓN (Español)</b>	<b>MATERIAL (Español)</b>
1	CREPINE	ACIER INOXYDABLE AISI 304	REJILLA	ACERO INOXYDABLE AISI 304
2 *	CAGE D'ASPIRATION	FORGE	CUERPO DE ASPIRACION	HIERRO FUNDIDO
3	BEARING BUSH POUR CAGE D'ASPIRATION	CAOUTCHOUC	COJINETE CUERPO DE ASPIRACION	GOMA NBR
4	SEEGER BEARING BUSH	ACIER INOXYDABLE AISI 304	SEEGER POR COJINETE	ACERO INOXYDABLE AISI 304 ACERO
5	ELEMENT INTERMEDIARE	ACIER INOXYDABLE AISI 304	ELEMENTO INTERMEDIO	INOXYDABLE AISI 304
6	ROUE	NORYL GFN2	IMPULSOR	NORYL GFN2
7	ENTRETOISE INTERMEDIARE	ACIER INOXYDABLE AISI 304	DISTANCIADOR INTERMEDIO	ACERO INOXYDABLE AISI 304
8	DIFFUSEUR BEARING BUSH	CAOUTCHOUC	COJINETE DIFUSOR	GOMA NBR
9	DIFFUSEUR	NORYL GFN2 + ACIER INOXYDABLE AISI 304	DIFUSOR	NORYL GFN2 + ACERO INOXYDABLE AISI 304
10	JOINT	ACIER INOXYDABLE AISI 304	ACOPLAMIENTO	ACERO INOXYDABLE AISI 304
11	ENTRETOISE PREMIERE ROUE	NORYL GFN2	DISTANCIADOR PRIMER IMPULSOR	NORYL GFN2
12	ARBRE POMPE	ACIER INOXYDABLE AISI 420	EJE DE BOMBA	ACERO INOXYDABLE AISI 420
13	ENTRETOISE	NORYL GFN2	DISTANCIADOR	NORYL GFN2
14	RING	ACIER INOXYDABLE AISI 304	ANILLO EN ACERO	ACERO INOXYDABLE AISI 304
15	VIS	ACIER INOXYDABLE AISI 304	TORNILLO	ACERO INOXYDABLE AISI 304
16	CONTRESUSPENSION	PTFE + 25% GRAPHITE	CONTRA-SUSPENSION	PTFE+25%CARBON
17	ANNEAU VALVE GASKET	NORYL GFN2	JUNTA PARA VALVULA	NORYL GFN2
18	BAGUE VALVE GASKET	CAOUTCHOUC	JUNTA VALVULA	GOMA NBR
19	PLAT	ACIER INOXYDABLE AISI 304	VALVULA	ACERO INOXYDABLE AISI 304
20 *	REFOULEMENT	FORGE	CUERPO DE IMPULSION	HIERRO FUNDIDO
21	CHEMISE	ACIER INOXYDABLE AISI 304	CAMISA	ACERO INOXYDABLE AISI 304
22	PROTECTION CABLE	ACIER INOXYDABLE AISI 304	PARACABLE	ACERO INOXYDABLE AISI 304
23	BRIDE SUPERIEURE	ACIER INOXYDABLE AISI 304	GRAPA SUPERIOR	ACERO INOXYDABLE AISI 304
24	BRIDE INFERIEURE	ACIER INOXYDABLE AISI 304	GRAPA INFERIOR	ACERO INOXYDABLE AISI 304
25	N.2 VIS M4X10 POUR BRIDE SUPERIEURE	ACIER INOXYDABLE AISI 304	N.2 TORNILLOS GRAPA SUPERIOR	ACERO INOXYDABLE AISI 304
26	N.2 VIS M4X10 POUR BRIDE INFERIEURE	ACIER INOXYDABLE AISI 304	N.2 TORNILLOS GRAPA INFERIOR	ACERO INOXYDABLE AISI 304
27	VIS	ACIER INOXYDABLE AISI 304	TORNILLO POR ACOPLAMIENTO	ACERO INOXYDABLE AISI 304
28	N.2 VIS M4X8 POUR CREPINE	ACIER INOXYDABLE AISI 304	N.2 TORNILLOS REJILLA	ACERO INOXYDABLE AISI 304
29	ANNEAU FOR CAGE D'ASPIRATION	NORYL GFN2 + ACIER INOXYDABLE AISI 304	ANILLO CUERPO DE ASPIRACION	NORYL GFN2 + ACERO INOXYDABLE AISI 304

**\* 140 PSX**

ACCIAIO INOX AISI 304  
AISI 304  
ACIER INOXYDABLE AISI 304 ACERO  
INOXYDABLE AISI 304