

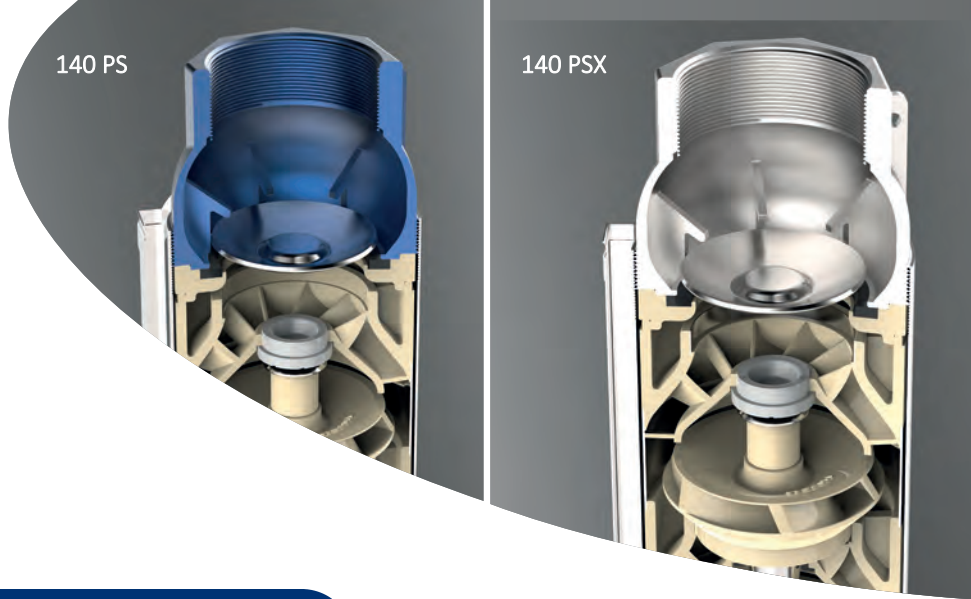


6" Semiaxial Impeller
High Capacity Submersible Pumps

Made in Italy



Catalogo 50 Hz



maximum
50 gr/m³



6" 140 PS/PSX - HIGH CAPACITY SUBMERSIBLE PUMP WITH SEMIAXIAL IMPELLER

140PS

Impeller in Noryl, Diffuser in Noryl, Intermediate casing and external sleeve in AISI 304, Delivery bowl and suction cage in cast iron

140PSX

Impeller in Noryl, Diffuser in Noryl, Intermediate casing and external sleeve in AISI 304, Delivery bowl and suction cage in Stainless steel AISI 304

Maximum sand content: 50 gr/m³

High capacity: 54 m³/h – 900 l/min

STAGE



140 PSX



6" PR / PS - 23

ELECTRIC SUBMERSIBLE PUMPS CASED VERSION 6" (SERIES 140 PS N - 140 PSX N) 140 PS / 140 PSX are high efficiency semiaxial pumps suitable for clean water applications such as civil and industrial water supply, booster systems, firefighting systems, irrigation and water networks.

ADVANTAGES

Very compact pump, heavy duty construction easy assembly and disassembly, high performances. Pump fitted with low friction counter thrust for longer impeller life.

MATERIALS

Impellers and diffusers in GFN2 Noryl, AISI 304 stainless steel intermediate element, sleeve, strainer and screws.

Suction cage and delivery bowl in cast iron for 140 PS version, Suction cage and delivery bowl in AISI 304 stainless steel for 140 PSX version. Counter thrust in PTFE + 25% graphite.

HYDRAULIC PERFORMANCES

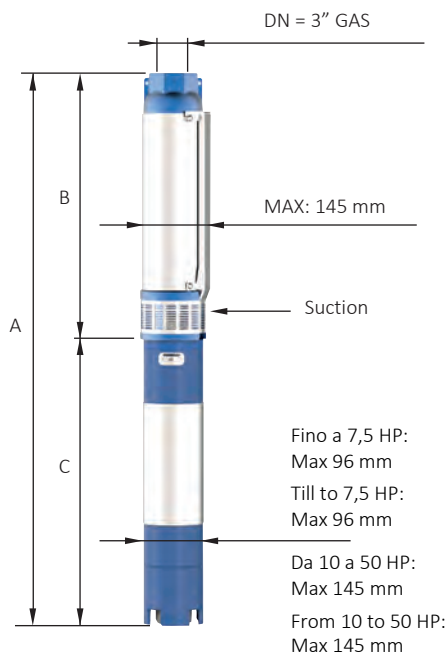
Capacity up to 54 m³/h and HMT up to 390 m. Motor power up to 37 kW-50 HP.

Maximum sand tolerance: 50 g/m³



6" 140 PS / PSX 36 - HYDRAULIC PERFORMANCES

Motor		50 Hz - 2900 rpm			Q = Capacity					
Type	Power		V 400	l/min	0	300	400	500	600	700
	kW	HP	A	l/sec	0	5	6,67	8	10	11,67
				m³/h	0	18	24	30	36	42
140 PS36 N/03	3	4,0	7,5	H[m]	37	30	28	25	22	17
140 PS36 N/04	4	5,5	10		49	40	37	34	29	23
140 PS36 N/06	5,50	7,5	12,5		74	59	56	50	43	35
140 PS36 N/08	7,50	10	17,5		98	79	74	67	58	46
140 PS36 N/10	9,20	12,5	21		123	99	93	84	72	58
140 PS36 N/12	11	15	24,5		147	119	112	101	86	69
140 PS36 N/14	13	17,5	28		172	139	130	118	101	81
140 PS36 N/16	15	20	32		196	158	149	134	115	92
140 PS36 N/20	18,50	25	40		245	198	186	168	144	115
140 PS36 N/23	22	30	47,5		282	228	214	193	166	132
140 PS36 N/28	26	35	55		343	277	260	235	202	161
140 PS36 N/32	30	40	62,5		392	317	298	269	230	184
140 PS36 N/39	37	50	78		478	386	363	328	281	224



Motor 50 Hz - 2900 rpm	Overall dimensions and weights				
Type	A mm Tri	B mm	C mm Tri	M kg Tri	P kg
140 PS36 N/03	1020	568	452	15	13
140 PS36 N/04	1261	664	597	22	14
140 PS36 N/06	1554	856	698	27	15,5
140 PS36 N/08	1866	1048	818	32	16
140 PS36 N/10	1991	1240	751	60	17,5
140 PS36 N/12	2243	1432	811	65	19
140 PS36 N/14	2465	1624	841	70	21
140 PS36 N/16	2747	1816	931	75	25
140 PS36 N/20	3191	2200	991	83	27
140 PS36 N/23	3559	2488	1071	92	29
140 PS36 N/28	4149	2968	1181	100	32
140 PS36 N/32	4603	3352	1251	108	35
140 PS36 N/39	5365	4024	1341	118	40

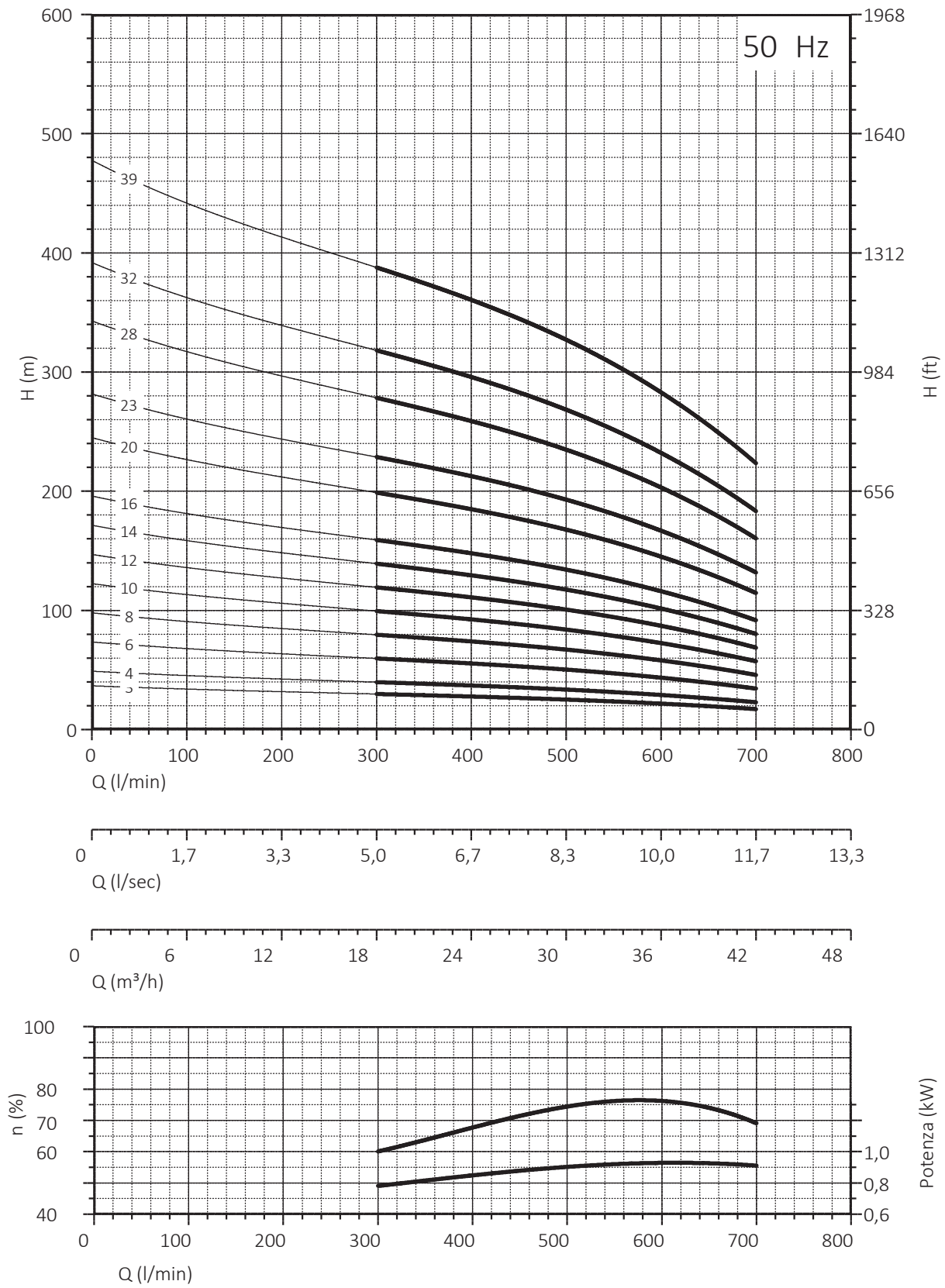

140 PSX

Suction cage and delivery bowl
(with cap valve) in AISI 304 casted

n% = Pump efficiency
kW/st = Stage absorption

Max 76,3%
Max 0,93

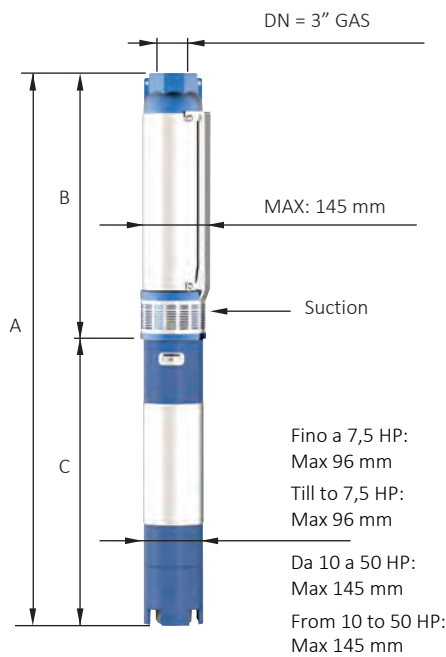
6" 140 PS / PSX 36 - HYDRAULIC PERFORMANCES



NPSH (m)	25%	50%	75%	100%
140 PS36 - 140 PSX36	3,4	3,4	4	6

6" 140 PS / PSX 42 - HYDRAULIC PERFORMANCES

Motor				Q = Capacity							
Type	50 Hz - 2900 rpm		V 400	l/min	0	400	500	600	700	800	900
	Power				l/sec	0	6,67	8,33	10	11,67	13,33
	kW	HP	A	m³/h	0	24	30	36	42	48	54,0
140 PS 42 N/03	4	5,5	10	H[m]	35	29	27	26	23	19	15
140 PS 42 N/04	5,50	7,5	12,5		46	39	37	34	30	25	20
140 PS 42 N/06	7,50	10	17,5		69	59	55	51	45	38	30
140 PS 42 N/07	9,20	12,5	21		81	68	64	60	53	44	35
140 PS 42 N/09	11	15	24,5		104	88	82	77	68	57	45
140 PS 42 N/11	13	17,5	28		127	107	101	94	83	70	55
140 PS 42 N/12	15	20	32		138	117	110	102	90	76	60
140 PS 42 N/15	18,50	25	40		173	146	137	128	113	95	75
140 PS 42 N/18	22	30	47,5		207	176	165	153	135	114	90
140 PS 42 N/22	26	35	55		253	215	201	187	165	140	110
140 PS 42 N/25	30	40	62,5		288	244	229	213	188	159	125
140 PS 42 N/31	37	50	78		357	302	284	264	233	197	155



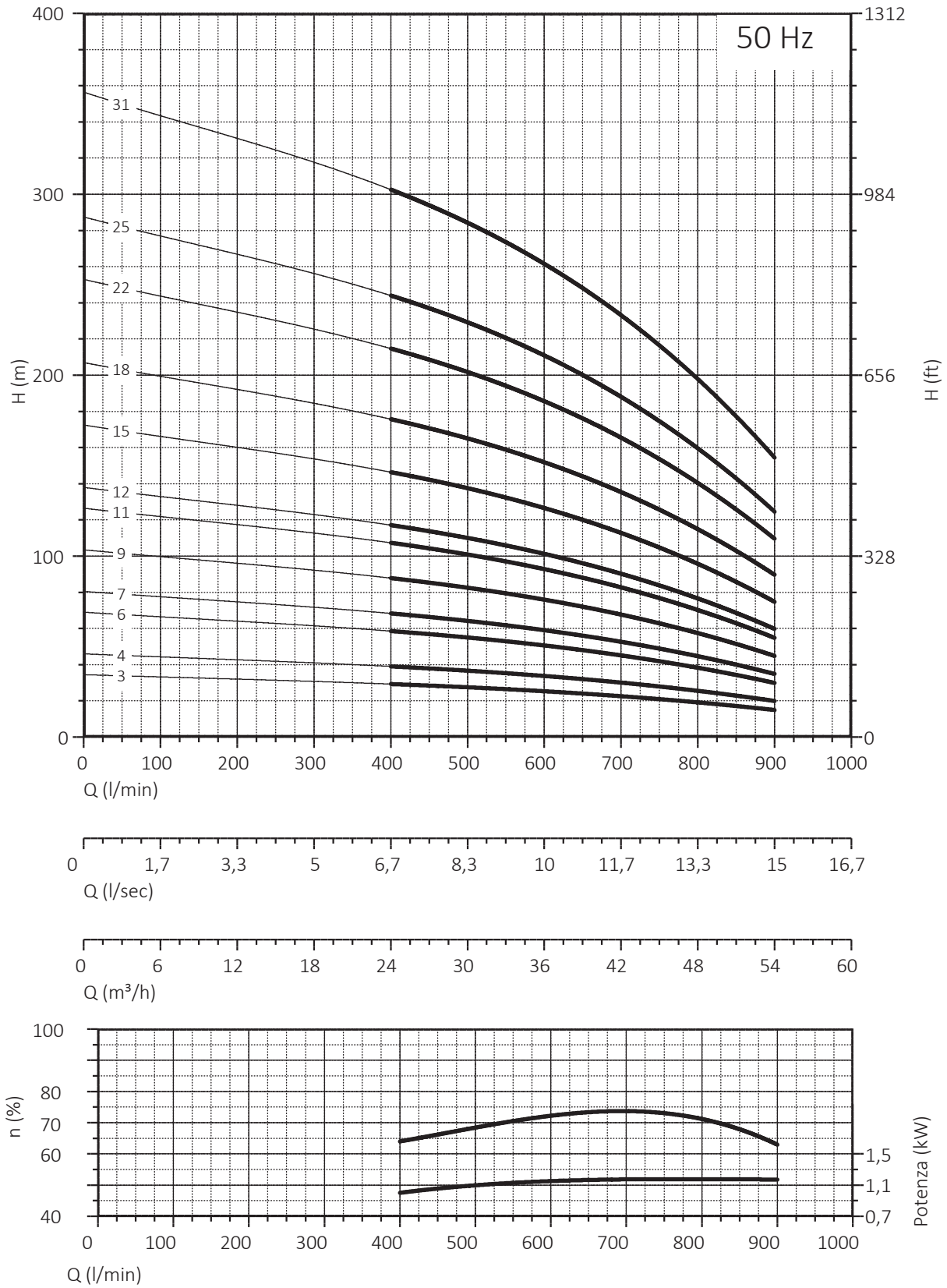
Motor 50 Hz - 2900 rpm	Overall dimensions and weights				
Type	A mm Tri	B mm	C mm Tri	M kg Tri	P kg
140 PS 42 N/03	1165	568	597	22	13
140 PS 42 N/04	1362	664	698	27	14
140 PS 42 N/06	1674	856	818	32	15,5
140 PS 42 N/07	1703	952	751	60	16
140 PS 42 N/09	1955	1144	811	65	17,5
140 PS 42 N/11	2177	1336	841	70	19
140 PS 42 N/12	2363	1432	931	75	21
140 PS 42 N/15	2711	1720	991	83	25
140 PS 42 N/18	3079	2008	1071	92	27
140 PS 42 N/22	3573	2392	1181	100	29
140 PS 42 N/25	3931	2680	1251	108	32
140 PS 42 N/31	4597	3256	1341	118	35


140 PSX
*Suction cage and delivery bowl
(with cap valve) in AISI 304 casted*

n% = Pump efficiency
kW/st = Stage absorption

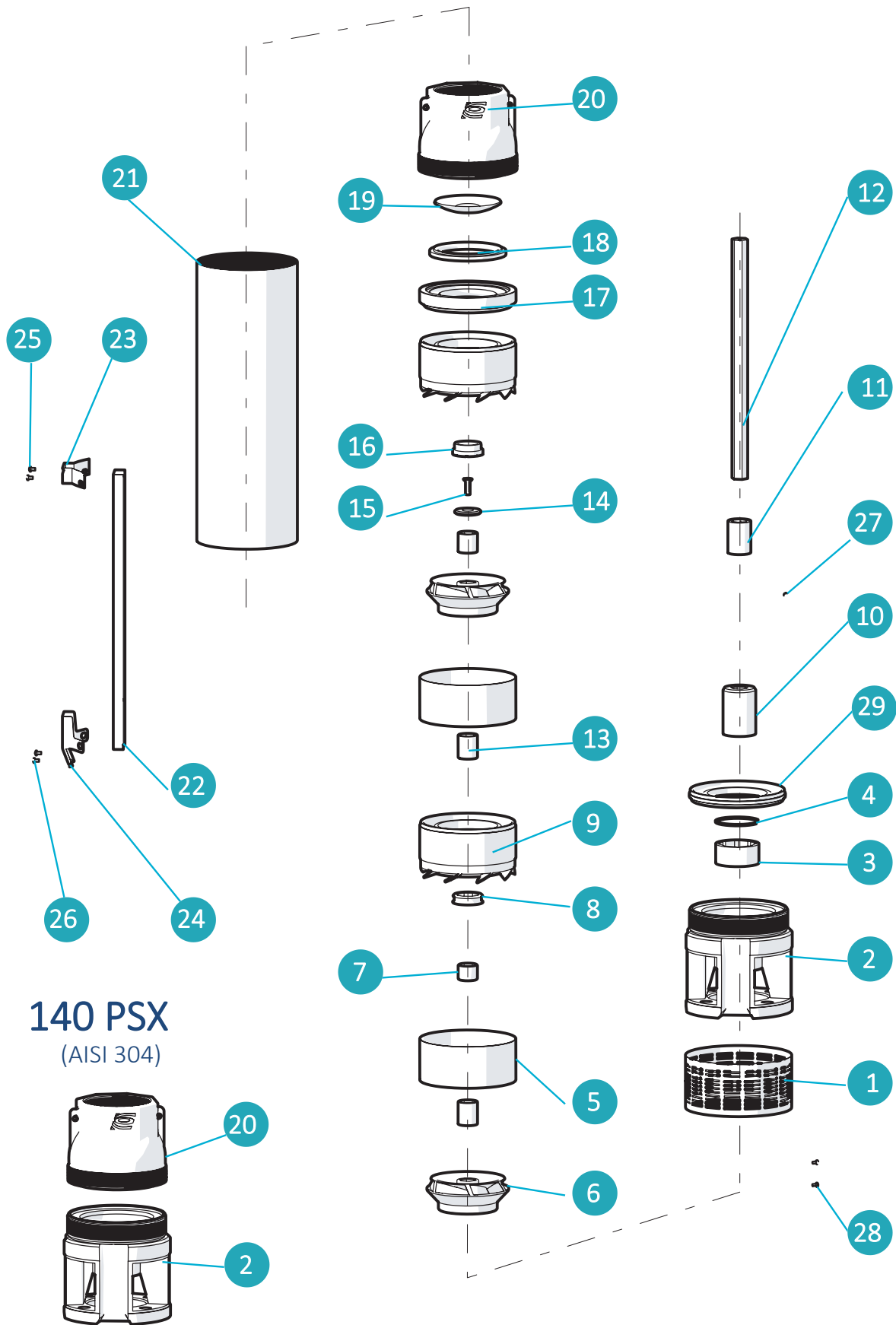
Max 74%
Max 1,18

6" 140 PS / PSX 42 - HYDRAULIC PERFORMANCES



NPSH (m)	25%	50%	75%	100%
140 PS 42 - 140 PSX 42	3,4	3,6	4,5	6,5

SPARE PARTS - 6" 140 PS / PSX



SPARE PARTS - 6" 140 PS /PSX

140 PS				
N.CODE	DESCRIZIONE (Italiano)	MATERIALE (Italiano)	DESCRIPTION (English)	MATERIAL (English)
1	SUCCHERUOLA	ACCIAIO INOX AISI 304	SUCTION STRAINER	AISI 304
2 *	GABBIA DI ASPIRAZIONE	GHISA	SUCTION CAGE	CAST IRON
3	BRONZINA PER GABBIA	GOMMA	BEARING BUSH FOR SUCTION CAGE	RUBBER NBR
4	SEEGER BRONZINA	ACCIAIO INOX AISI 304	SEEGER BEARING BUSH	AISI 304
5	ELEMENTO INTERMEDIO	ACCIAIO INOX AISI 304	INTERMEDIATE CASING	AISI 304
6	GIRANTE	NORYL GFN2	IMPELLER	NORYL GFN2
7	DISTANZIATORE INTERMEDIO	ACCIAIO INOX AISI 304	INTERMEDIATE SPACER	AISI 304
8	BRONZINA DIFFUSORE	GOMMA	DIFFUSER BEARING BUSH	RUBBER NBR
9	DIFFUSORE	NORYL GFN2 + ACCIAIO INOX AISI 304	DIFFUSER	NORYL GFN2 + RING AISI 304
10	GIUNTO DI TRAINO	ACCIAIO INOX AISI 304	JOINT	AISI 304
11	DISTANZIATORE PRIMA GIRANTE	NORYL GFN2	SPACER FIRST IMPELLER	NORYL GFN2
12	ALBERO POMPA	ACCIAIO INOX AISI 420	PUMP SHAFT	AISI 420
13	DISTANZIATORE	NORYL GFN2	SPACER	NORYL GFN2
14	DISCO ACCIAIO	ACCIAIO INOX AISI 304	RING	AISI 304
15	VITE	ACCIAIO INOX AISI 304	SCREW	AISI 304
16	CONTROSOSPENSIONE	PTFE+25%CARBONE	COUNTERTHRUST	PTFE+25%CARBON
17	ANELLO GUARNIZIONE MANDATA	NORYL GFN2	RING GASKET VALVE	NORYL GFN2
18	GUARNIZIONE FARFALLA	GOMMA	GASKET VALVE	RUBBER NBR
19	FARFALLA	ACCIAIO INOX AISI 304	CAP VALVE	AISI 304
20 *	MANDATA	GHISA	DELIVERY BOWL	CAST IRON
21	CAMICIA	ACCIAIO INOX AISI 304	SLEEVE	AISI 304
22	COPRICAPO	ACCIAIO INOX AISI 304	COVER CABLE	AISI 304
23	STAFFETTA SUPERIORE	ACCIAIO INOX AISI 304	UPPER FLANGE	AISI 304
24	STAFFETTA INFERIORE	ACCIAIO INOX AISI 304	LOWER FLANGE	AISI 304
25	N.2 VITI M4 X 10 PER STAFFETTA SUPERIORE	ACCIAIO INOX AISI 304	N.2 SCREW M4X10 FOR UPPER FLANGE	AISI 304
26	N.2 VITI M4 X 10 PER STAFFETTA INFERIORE	ACCIAIO INOX AISI 304	N.2 SCREW M4X10 FOR LOWER FLANGE	AISI 304
27	GRANO PER GIUNTO	ACCIAIO INOX AISI 304	SCREW	AISI 304
28	N.2 VITI M4 X 8 PER SUCCHERUOLA	ACCIAIO INOX AISI 304	N.2 SCREW M4X8 SUCTION STRAINER	AISI 304
29	ANELLO RACCORDO GABBIA	NORYL GFN2 + ACCIAIO INOX AISI 304	RING FOR SUCTION CAGE	NORYL GFN2 + RING AISI 304

N.CODE	DESCRIPTION (Français)	MATÉRIEL (Français)	DESCRIPCIÓN (Español)	MATERIAL (Español)
1	CREPINE	ACIER INOXYDABLE AISI 304	REJILLA	ACERO INOXYDABLE AISI 304
2 *	CAGE D'ASPIRATION	FORGE	CUERPO DE ASPIRACION	HIERRO FUNDIDO
3	BEARING BUSH POUR CAGE D'ASPIRATION	CAOUTCHOUC	COJINETE CUERPO DE ASPIRACION	GOMA NBR
4	SEEGER BEARING BUSH	ACIER INOXYDABLE AISI 304	SEEGER POR COJINETE	ACERO INOXYDABLE AISI 304 ACERO
5	ELEMENT INTERMEDIARE	ACIER INOXYDABLE AISI 304	ELEMENTO INTERMEDIO	INOXYDABLE AISI 304
6	ROUE	NORYL GFN2	IMPULSOR	NORYL GFN2
7	ENTRETOISE INTERMEDIARE	ACIER INOXYDABLE AISI 304	DISTANCIADOR INTERMEDIO	ACERO INOXYDABLE AISI 304
8	DIFFUSEUR BEARING BUSH	CAOUTCHOUC	COJINETE DIFUSOR	GOMA NBR
9	DIFFUSEUR	NORYL GFN2 + ACIER INOXYDABLE AISI 304	DIFUSOR	NORYL GFN2 + ACERO INOXYDABLE AISI 304
10	JOINT	ACIER INOXYDABLE AISI 304	ACOPLAMIENTO	ACERO INOXYDABLE AISI 304
11	ENTRETOISE PREMIERE ROUE	NORYL GFN2	DISTANCIADOR PRIMER IMPULSOR	NORYL GFN2
12	ARBRE POMPE	ACIER INOXYDABLE AISI 420	EJE DE BOMBA	ACERO INOXYDABLE AISI 420
13	ENTRETOISE	NORYL GFN2	DISTANCIADOR	NORYL GFN2
14	RING	ACIER INOXYDABLE AISI 304	ANILLO EN ACERO	ACERO INOXYDABLE AISI 304
15	VIS	ACIER INOXYDABLE AISI 304	TORNILLO	ACERO INOXYDABLE AISI 304
16	CONTRESUSPENSION	PTFE + 25% GRAPHITE	CONTRA-SUSPENSION	PTFE+25%CARBON
17	ANNEAU VALVE GASKET	NORYL GFN2	JUNTA PARA VALVULA	NORYL GFN2
18	BAGUE VALVE GASKET	CAOUTCHOUC	JUNTA VALVULA	GOMA NBR
19	PLAT	ACIER INOXYDABLE AISI 304	VALVULA	ACERO INOXYDABLE AISI 304
20 *	REFOULEMENT	FORGE	CUERPO DE IMPULSION	HIERRO FUNDIDO
21	CHEMISE	ACIER INOXYDABLE AISI 304	CAMISA	ACERO INOXYDABLE AISI 304
22	PROTECTION CABLE	ACIER INOXYDABLE AISI 304	PARACABLE	ACERO INOXYDABLE AISI 304
23	BRIDE SUPERIEURE	ACIER INOXYDABLE AISI 304	GRAPA SUPERIOR	ACERO INOXYDABLE AISI 304
24	BRIDE INFERIEURE	ACIER INOXYDABLE AISI 304	GRAPA INFERIOR	ACERO INOXYDABLE AISI 304
25	N.2 VIS M4X10 POUR BRIDE SUPERIEURE	ACIER INOXYDABLE AISI 304	N.2 TORNILLOS GRAPA SUPERIOR	ACERO INOXYDABLE AISI 304
26	N.2 VIS M4X10 POUR BRIDE INFERIEURE	ACIER INOXYDABLE AISI 304	N.2 TORNILLOS GRAPA INFERIOR	ACERO INOXYDABLE AISI 304
27	VIS	ACIER INOXYDABLE AISI 304	TORNILLO POR ACOPLAMIENTO	ACERO INOXYDABLE AISI 304
28	N.2 VIS M4X8 POUR CREPINE	ACIER INOXYDABLE AISI 304	N.2 TORNILLOS REJILLA	ACERO INOXYDABLE AISI 304
29	ANNEAU FOR CAGE D'ASPIRATION	NORYL GFN2 + ACIER INOXYDABLE AISI 304	ANILLO CUERPO DE ASPIRACION	NORYL GFN2 + ACERO INOXYDABLE AISI 304

*** 140 PSX**

ACCIAIO INOX AISI 304
AISI 304
ACIER INOXYDABLE AISI 304 ACERO
INOXYDABLE AISI 304

SPARE PARTS - 6" 140 PS /PSX

140 PSX
(AISI 304)

