

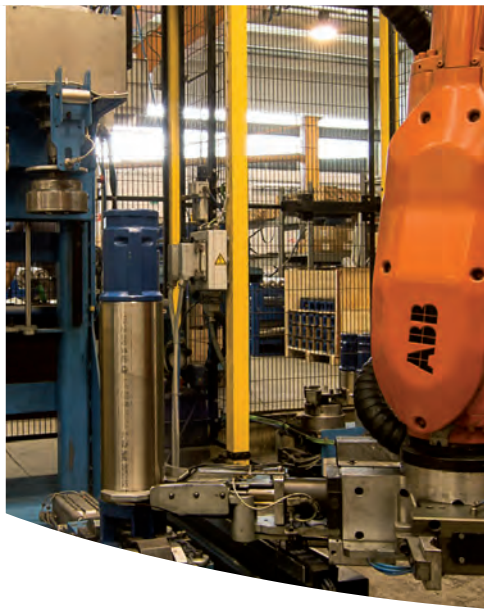


6" Floating Impeller Submersible Pumps

Made in Italy



Catalogo 60 Hz



6" 140 PR/PRX - HIGH CAPACITY SUBMERSIBLE PUMP WITH SEMIAXIAL IMPELLER

Floating Impeller Patented

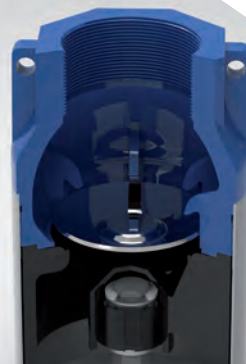
Robotized assembly

Maximum sand content: 400 gr/m³

Noryl Impeller and Diffuser Stainless Steel Casing AISI 304

Rubber globe version

Stainless Steel Cap Valve Version AISI 304



ELECTRIC SUBMERSIBLE PUMPS CASED VERSION 6" (SERIES 140 PR N - 140 PRX N)

The submersible pumps serie 140 PR N, in the range of 6" submersible pumps, are unique in the world to have a floating impeller with front shim adjustement. This innovative and patented concept provides to face continuous applications without renouncing to performances and efficiencies at the summit of this field, with a great competitiveness of the product in all range also to a economic level.

Suitable for clean water supply in domestic, industrial, pressure boosters, firefighting systems, irrigation and water system networks.

ADVANTAGES

- High Efficiency
- High wear resistance to sand
- Longer pump life thanks to the high quality of materials and to the specific floating impeller design
- Very low maintenance need
- Components F.D.A approved

MATERIALS

The materials of standard execution are: Impeller in technopolymer (Lexan) Diffuser in technopolymer (Lexan) Intermediate casing in Stainless Steel AISI 304 External sleeve in Stainless Steel AISI 304 Delivery bowl and suction cage in mechanical cast iron G25 Non return valve (rubber globe) included. Besides standard construction the pumps can be manufactured with the Delivery Bowl and suction cage in precision Stainless Steel AISI 304. Also Available with suction cage and delivery bowl in AISI 304 Stainless steel.

HYDRAULIC PERFORMANCES

Capacity up to 48 m³/h Manometric head up to 630 m.

Power up to 37 Kw - 50 HP.

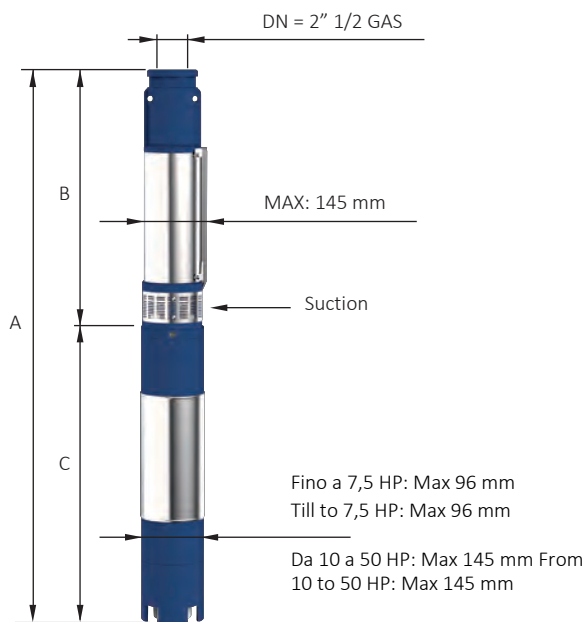
Maximum quantity of sand suspended in the water: 400g/m³



6" 140 PR / PRX 6 - HYDRAULIC PERFORMANCES

SERVICE FACTOR : 1,15

Motor at 3450 rpm				Q= Capacity								
Type	Power		V 460	l/min	0	72	96	120	144	168	192	216
	kW	HP	A	l/sec	0,00	1,20	1,60	2,00	2,40	2,80	3,20	3,60
				m ³ /h	0,0	4,3	5,8	7,2	8,6	10,1	11,5	13,0
140 PR6 N/03	2,20	3	4,7	H[m]	63	59	55	49	41	33	26	13
140 PR6 N/05	3,00	4	5,8		105	98	92	81	69	55	43	22
140 PR6 N/06	4,00	5,5	8,6		126	118	110	98	83	66	52	26
140 PR6 N/09	5,50	7,5	10,8		189	176	166	146	124	99	78	39
140 PR6 N/12	7,50	10	15,1		252	235	221	195	166	132	104	52
140 PR6 N/15	9,20	12,5	18,1		315	294	276	244	207	165	130	65
140 PR6 N/18	11,00	15	21,1		378	353	331	293	249	198	156	78
140 PR6 N/21	13,00	17,5	24,1		441	411	387	342	290	231	181	91



Overall dimensions and weights					
Type	A mm Tri	B mm	C mm Tri	M kg Tri	P kg
140 PR6 N/03	895	443	452	15	14
140 PR6 N/05	1052	495	557	19	16
140 PR6 N/06	1118	521	597	22	18
140 PR6 N/09	1297	599	698	27	21
140 PR6 N/12	0	709	0	0	25
140 PR6 N/15	0	787	0	0	28
140 PR6 N/18	0	865	0	0	32
140 PR6 N/21	0	943	0	0	36



140 PRX

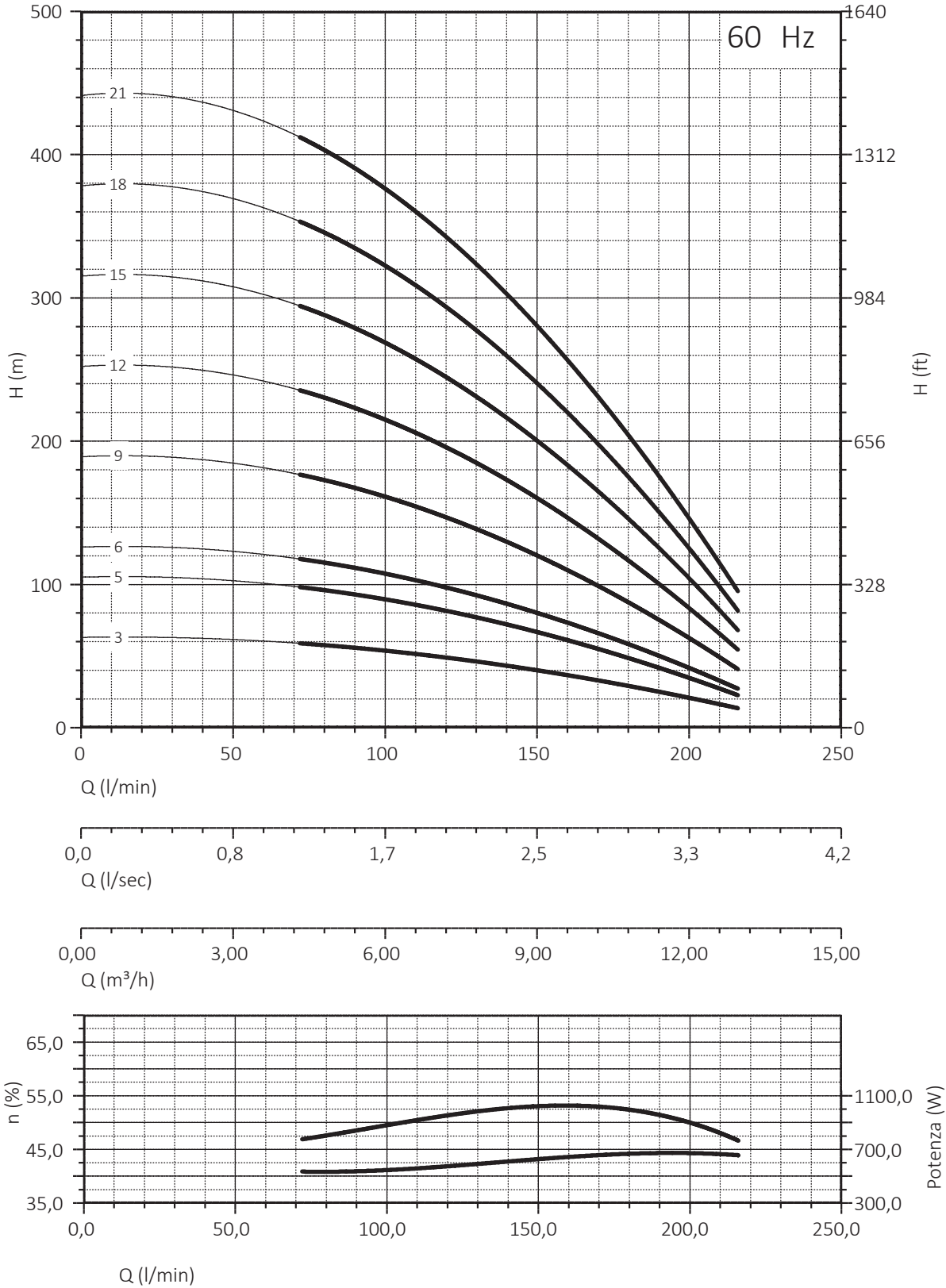
Suction cage and delivery bowl
(with cap valve) in AISI 304 casted

n% = Pump efficiency
W/st = Stage absorption

Max 57%
Max 690

6" 140 PR / PRX 6 - HYDRAULIC PERFORMANCES

SERVICE FACTOR : 1,15



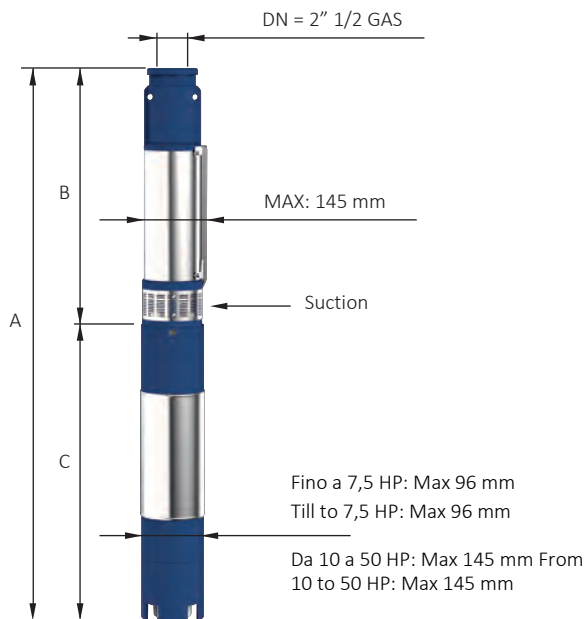
NPSH (m)	25%	50%	75%	100%
140 PR 6 - 140 PRX6	2,2	2,2	2,7	3,5

Maximum Sand Content :400gr/m³

6" 140 PR / PRX 8 - HYDRAULIC PERFORMANCES

SERVICE FACTOR : 1,15

Motor at 3450 rpm				Q= Capacity									
Type	Power		V 460	l/min	0	96	120	144	168	192	216	240	264
	kW	HP	A	l/sec	0,00	1,60	2,00	2,40	2,80	3,20	3,60	4,00	4,40
				m³/h	0,0	5,8	7,2	8,6	10,1	11,5	13,0	14,4	15,8
140 PR8 N/03	2,20	3	4,7	H[m]	65	59	55	50	45	38	31	23	15
140 PR8 N/04	3,00	4	5,8		86	78	74	67	59	51	41	31	20
140 PR8 N/06	4,00	5,5	8,6		130	118	111	100	89	76	61	46	30
140 PR8 N/08	5,50	7,5	10,8		173	157	148	134	119	101	82	61	40
140 PR8 N/12	7,50	10	15,1		259	235	221	201	178	152	123	92	60
140 PR8 N/14	9,20	12,5	18,1		302	274	258	234	208	178	143	107	71
140 PR8 N/17	11,00	15	21,1		367	333	313	284	252	216	174	130	86
140 PR8 N/21	13,00	17,5	24,1		454	412	387	351	312	266	215	160	106
140 PR8 N/24	15,00	20	27,5		518	470	443	401	356	304	246	183	121



Overall dimensions and weights					
Type	A mm Tri	B mm	C mm Tri	M kg Tri	P kg
140 PR8 N/03	895	443	452	15	14
140 PR8 N/04	1026	469	557	19	16
140 PR8 N/06	1118	521	597	22	18
140 PR8 N/08	1271	573	698	27	21
140 PR8 N/12	1378	677	701	55	25
140 PR8 N/14	1512	761	751	60	28
140 PR8 N/17	1650	839	811	65	32
140 PR8 N/21	1784	943	841	70	36
140 PR8 N/24	1952	1021	931	75	40



140 PRX

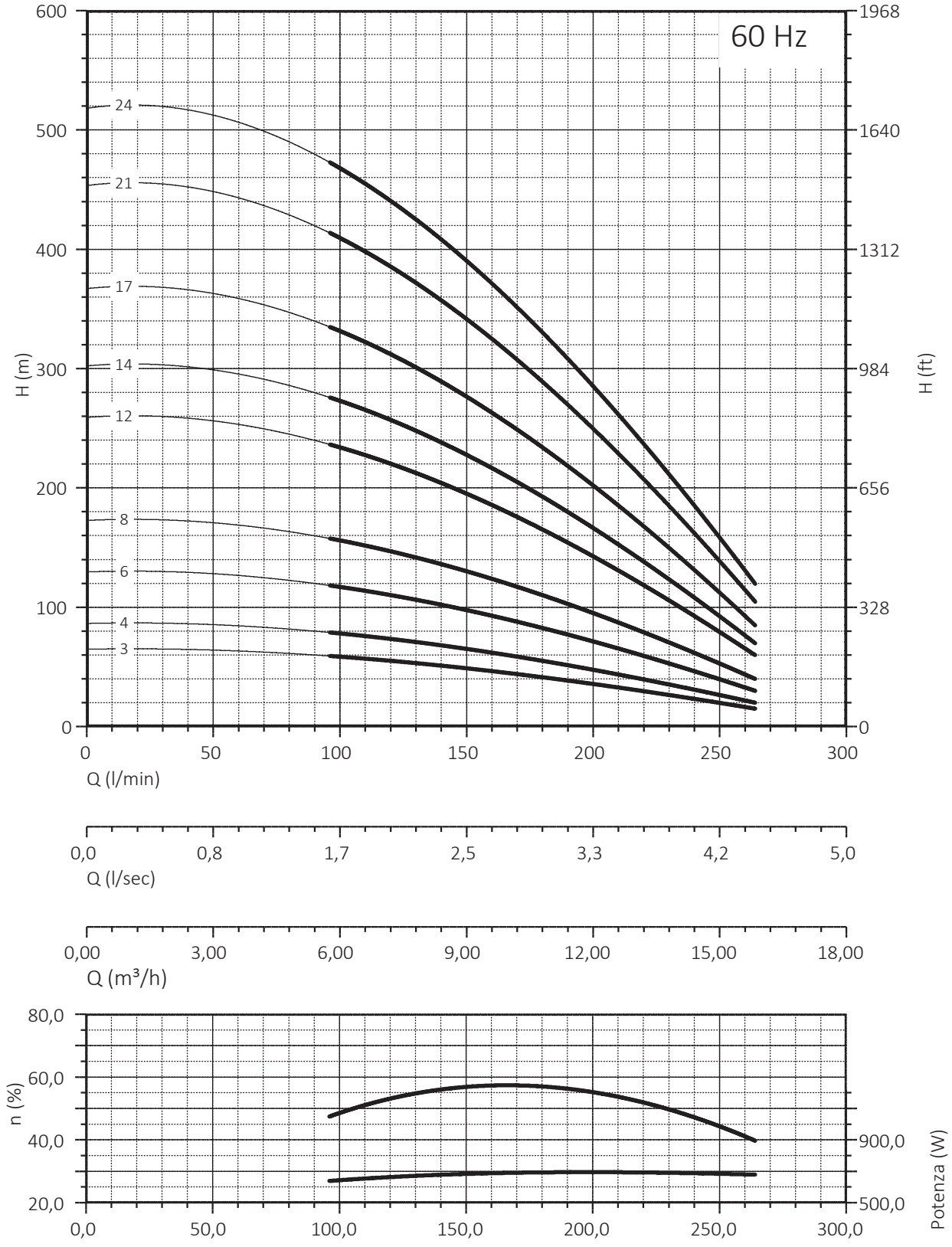
Suction cage and delivery bowl
(with cap valve) in AISI 304 casted

n% = Pump efficiency
W/st = Stage absorption

Max 59%
Max 700

6" 140 PR / PRX 8 - HYDRAULIC PERFORMANCES

SERVICE FACTOR : 1,15



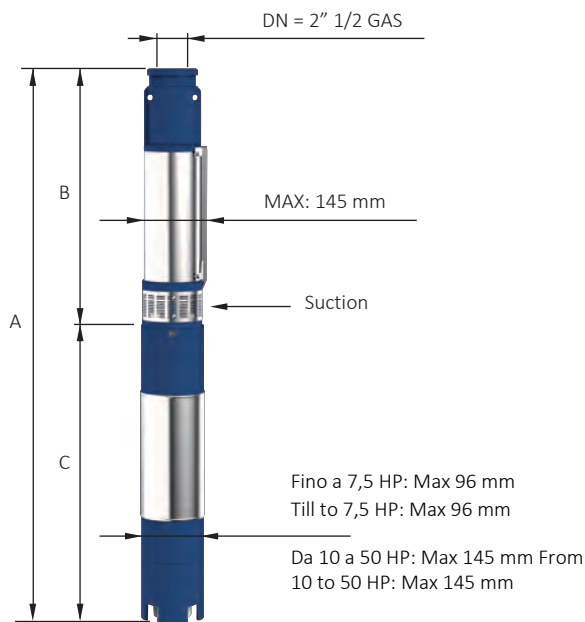
NPSH (m)	25%	50%	75%	100%
140 PR 8 - 140 PRX 8	2,2	2,2	3	4,8

Maximum Sand Content :400gr/m³

6" 140 PR / PRX 9 - HYDRAULIC PERFORMANCES

SERVICE FACTOR : 1,15

Motore - Motor - Moteur Caratteristiche a 3450 rpm				Q=Portata - Capacity - Debit								
Tipo - Type	Power		V 460	l/min	0	96	132	168	204	240	276	312
	kW	HP	A	l/sec	0,00	1,60	2,20	2,80	3,40	4,00	4,60	5,20
				m ³ /h	0,0	5,8	7,9	10,1	12,2	14,4	16,6	18,7
140 PR9 N/02	2,20	3	4,7	H[m]	46	45	43	40	37	32	27	19
140 PR9 N/04	3,00	4	5,8		92	89	85	81	74	65	53	37
140 PR9 N/05	4,00	5,5	8,6		115	112	106	101	92	81	67	47
140 PR9 N/07	5,50	7,5	10,8		161	156	149	141	129	114	93	66
140 PR9 N/10	7,50	10	15,1		230	223	213	202	184	162	133	94
140 PR9 N/12	9,20	12,5	18,1		276	268	255	242	221	195	160	112
140 PR9 N/14	11,00	15	21,1		323	312	298	282	257	227	187	131
140 PR9 N/17	13,00	17,5	24,1		392	379	361	343	312	276	227	159
140 PR9 N/20	15,00	20	27,5		461	446	425	403	368	324	267	187



Dimensioni di ingombro e pesi Overall dimensions and weights					
Tipo - Type	A mm Tri	B mm	C mm Tri	M kg Tri	P kg
140 PR9 N/02	869	417	452	15	14
140 PR9 N/04	1026	469	557	19	16
140 PR9 N/05	1092	495	597	22	18
140 PR9 N/07	1245	547	698	27	21
140 PR9 N/10	0	625	0	0	25
140 PR9 N/12	0	677	0	0	28
140 PR9 N/14	0	761	0	0	32
140 PR9 N/17	0	839	0	0	36
140 PR9 N/20	0	917	0	0	40



140 PRX

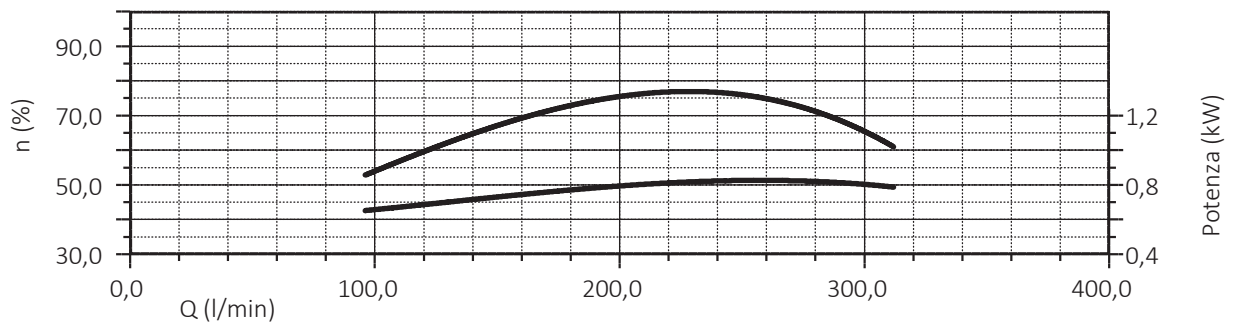
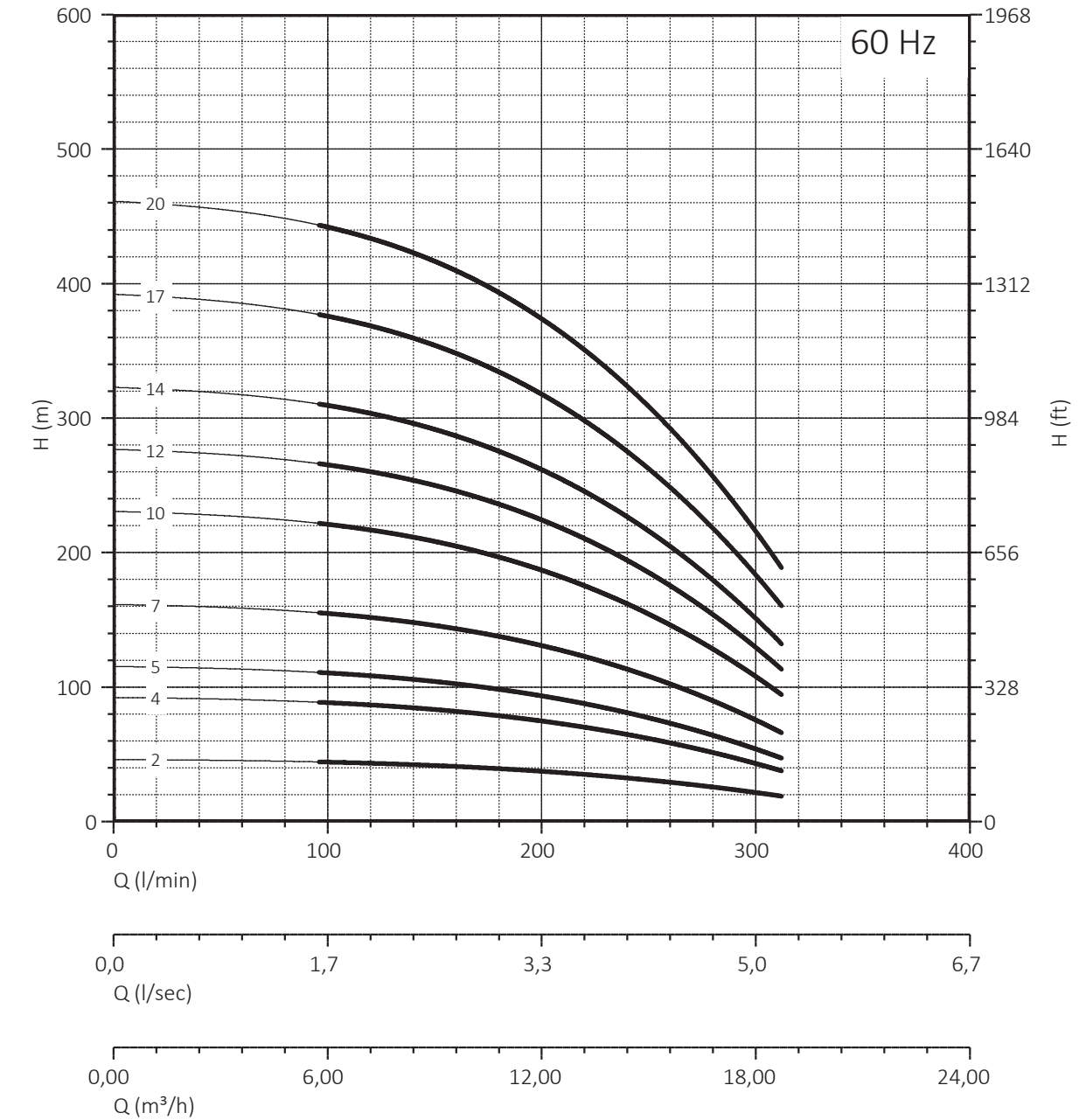
Suction cage and delivery bowl
(with cap valve) in AISI 304 casted

n% = Pump efficiency
W/st = Stage absorption

Max 77%
Max 0,84

6" 140 PR / PRX 9 - HYDRAULIC PERFORMANCES

SERVICE FACTOR : 1,15



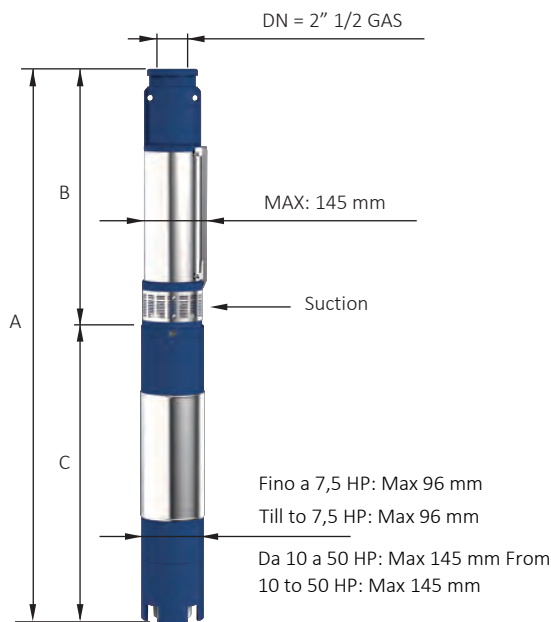
NPSH (m)	25%	50%	75%	100%
140 PR 9 - 140 PRX 9	2,2	2,2	3	4,8

Maximum Sand Content :400gr/m³

6" 140 PR / PRX 12 - HYDRAULIC PERFORMANCES

SERVICE FACTOR : 1,15

Motor a 3450 rpm				Q= Capacity						
Type	Power		V 460	l/min	0	120	180	240	300	360
	kW	HP	A	l/sec	0,00	2,00	3,00	4,00	5,00	6,00
				m ³ /h	0,0	7,2	10,8	14,4	18,0	21,6
140 PR12 N/02	2,20	3	4,7	H[m]	52	50	47	42	35	24
140 PR12 N/03	3,00	4	5,8		79	75	71	63	52	36
140 PR12 N/05	4,00	5,5	8,6		131	125	118	106	86	61
140 PR12 N/07	5,50	7,5	10,8		183	175	165	148	121	85
140 PR12 N/09	7,50	10	15,1		236	225	213	190	156	109
140 PR12 N/12	9,20	12,5	18,1		314	300	284	253	207	146
140 PR12 N/14	11,00	15	21,1		367	349	331	296	242	170
140 PR12 N/17	13,00	17,5	24,1		446	424	402	359	294	206
140 PR12 N/19	15,00	20	27,5		498	474	449	401	328	231
140 PR12 N/24	18,50	25	34,4		629	599	567	507	415	291



Overall dimensions and weights					
Type	A mm Tri	B mm	C mm Tri	M kg Tri	P kg
140 PR12 N/02	869	417	452	15	16
140 PR12 N/03	1000	443	557	19	17
140 PR12 N/05	1092	495	597	22	18
140 PR12 N/07	1245	547	698	27	21
140 PR12 N/09	1300	599	701	55	25
140 PR12 N/12	1460	709	751	60	29
140 PR12 N/14	1572	761	811	65	31
140 PR12 N/17	1680	839	841	70	37
140 PR12 N/19	1822	891	931	75	42
140 PR12 N/24	2044	1053	991	83	47



140 PRX

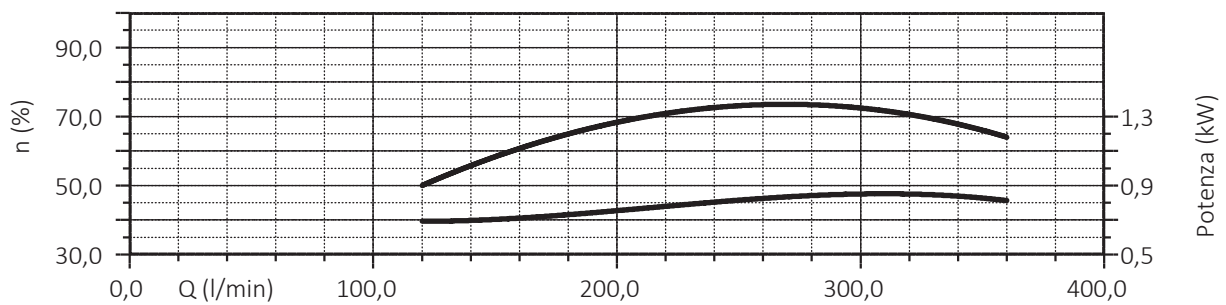
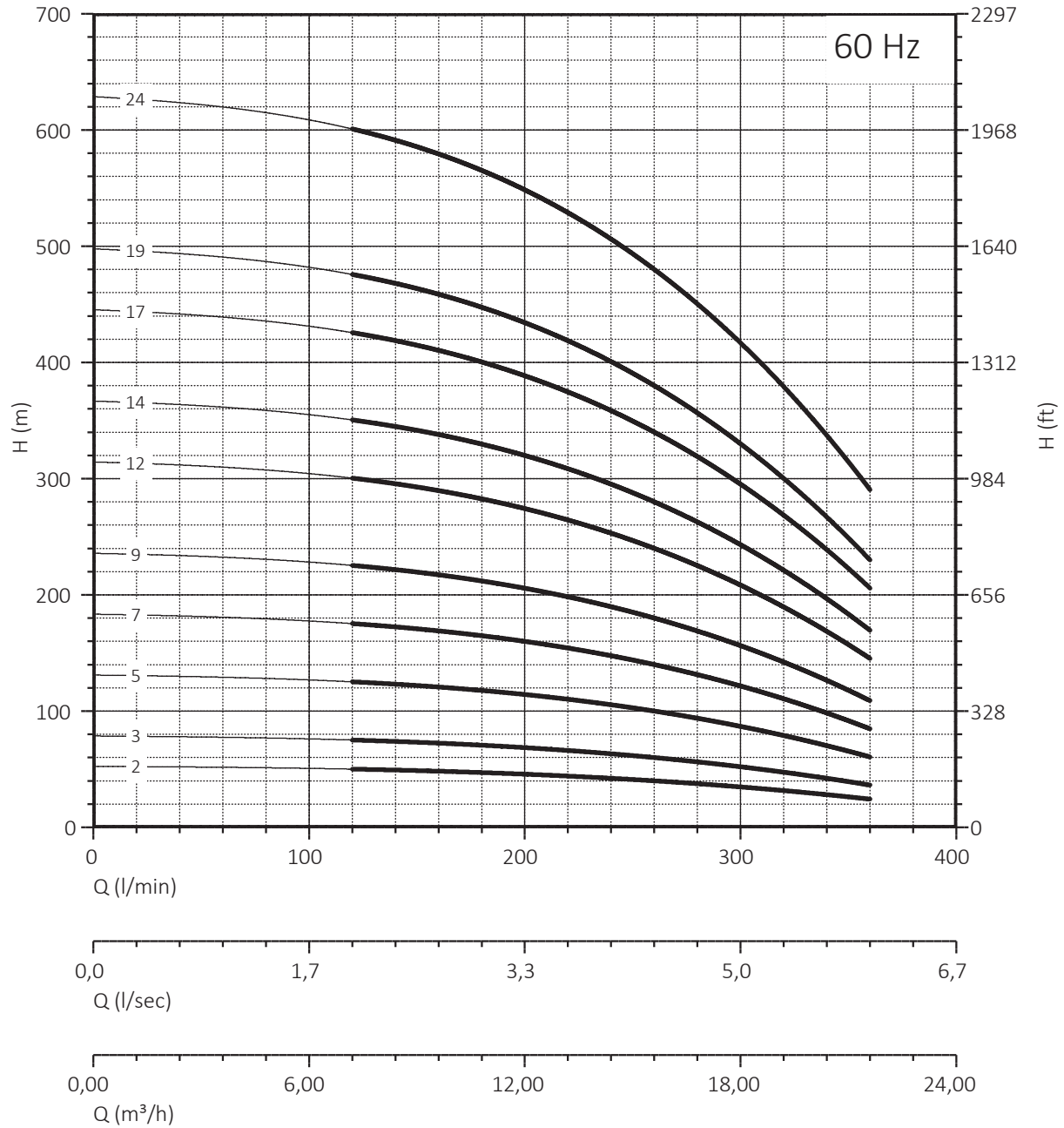
Suction cage and delivery bowl
(with cap valve) in AISI 304 casted

n% = Pump efficiency
W/st = Stage absorption

Max 72,6%
Max 0,86

6" 140 PR / PRX 12 - HYDRAULIC PERFORMANCES

SERVICE FACTOR : 1,15



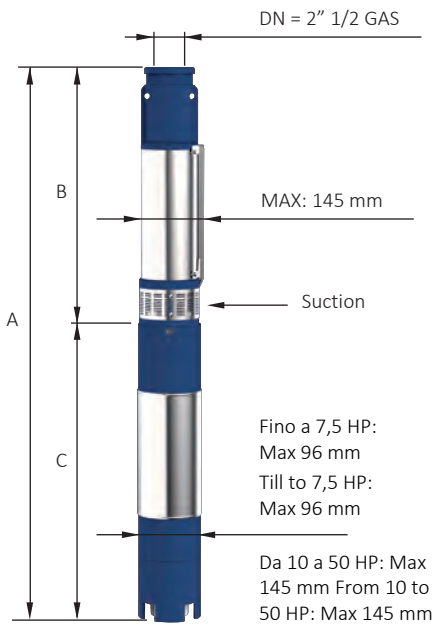
NPSH (m)	25%	50%	75%	100%
140 PR 12 - 140 PRX 12	2,2	2,2	3	4,8

Maximum Sand Content :400gr/m3

6" 140 PR / PRX 16 - HYDRAULIC PERFORMANCES

SERVICE FACTOR : 1,15

Motor at 3450 rpm				Q= Capacity								
Type	Power		V 460	l/min	0	180	240	300	360	420	480	540
	kW	HP	A	l/sec	0,00	3,00	4,00	5,00	6,00	7,00	8,00	9,00
				m³/h	0,0	10,8	14,4	18,0	21,6	25,2	28,8	32,4
140 PR16 N/02	3,00	4	5,8	H[m]	48	45	42	40	35	29	22	13
140 PR16 N/03	4,00	5,5	8,6		73	67	64	60	52	43	32	20
140 PR16 N/04	5,50	7,5	10,8		97	90	85	80	69	57	43	27
140 PR16 N/05	7,50	10	15,1		121	112	106	100	87	71	54	33
140 PR16 N/07	9,20	12,5	18,1		170	157	149	139	121	100	76	46
140 PR16 N/08	11,00	15	21,1		194	180	170	159	139	114	86	53
140 PR16 N/10	13,00	17,5	24,1		242	224	212	199	173	143	108	66
140 PR16 N/11	15,00	20	27,5		267	247	234	219	191	157	119	73
140 PR16 N/14	18,50	25	34,4		339	314	297	279	242	200	151	93
140 PR16 N/17	22,00	30	40,9		412	381	361	339	294	243	184	113
140 PR16 N/20	26,00	35	47,3		485	449	425	398	346	286	216	133
140 PR16 N/23	30,00	40	53,8		558	516	489	458	398	328	248	153



Overall dimensions and weights					
Type	A mm Tri	B mm	C mm Tri	M kg Tri	P kg
140 PR16 N/02	989	432	557	19	17
140 PR16 N/03	1062,5	465,5	597	22	18
140 PR16 N/04	1197	499	698	27	19
140 PR16 N/05	1233,5	532,5	701	55	20
140 PR16 N/07	1350,5	599,5	751	60	21
140 PR16 N/08	1444	633	811	65	23
140 PR16 N/10	1541	700	841	70	24
140 PR16 N/11	1664,5	733,5	931	75	26
140 PR16 N/14	1825	834	991	83	31
140 PR16 N/17	2005,5	934,5	1071	92	34
140 PR16 N/20	2216	1035	1181	100	36
140 PR16 N/23	2386,5	1135,5	1251	108	38



140 PRX

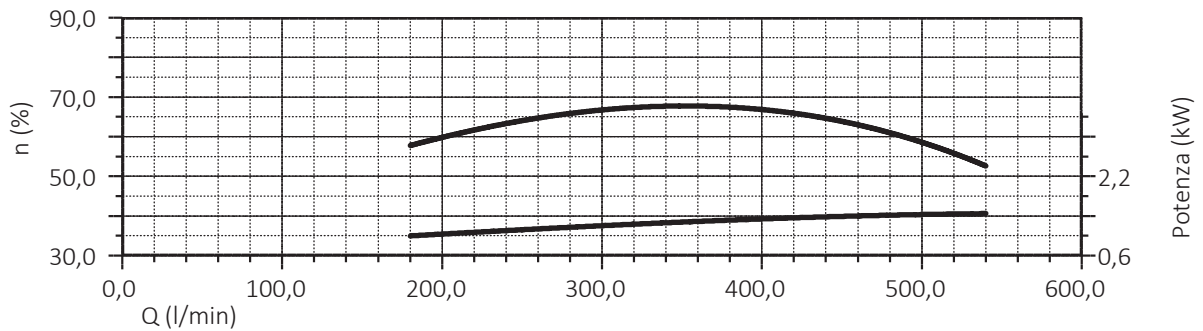
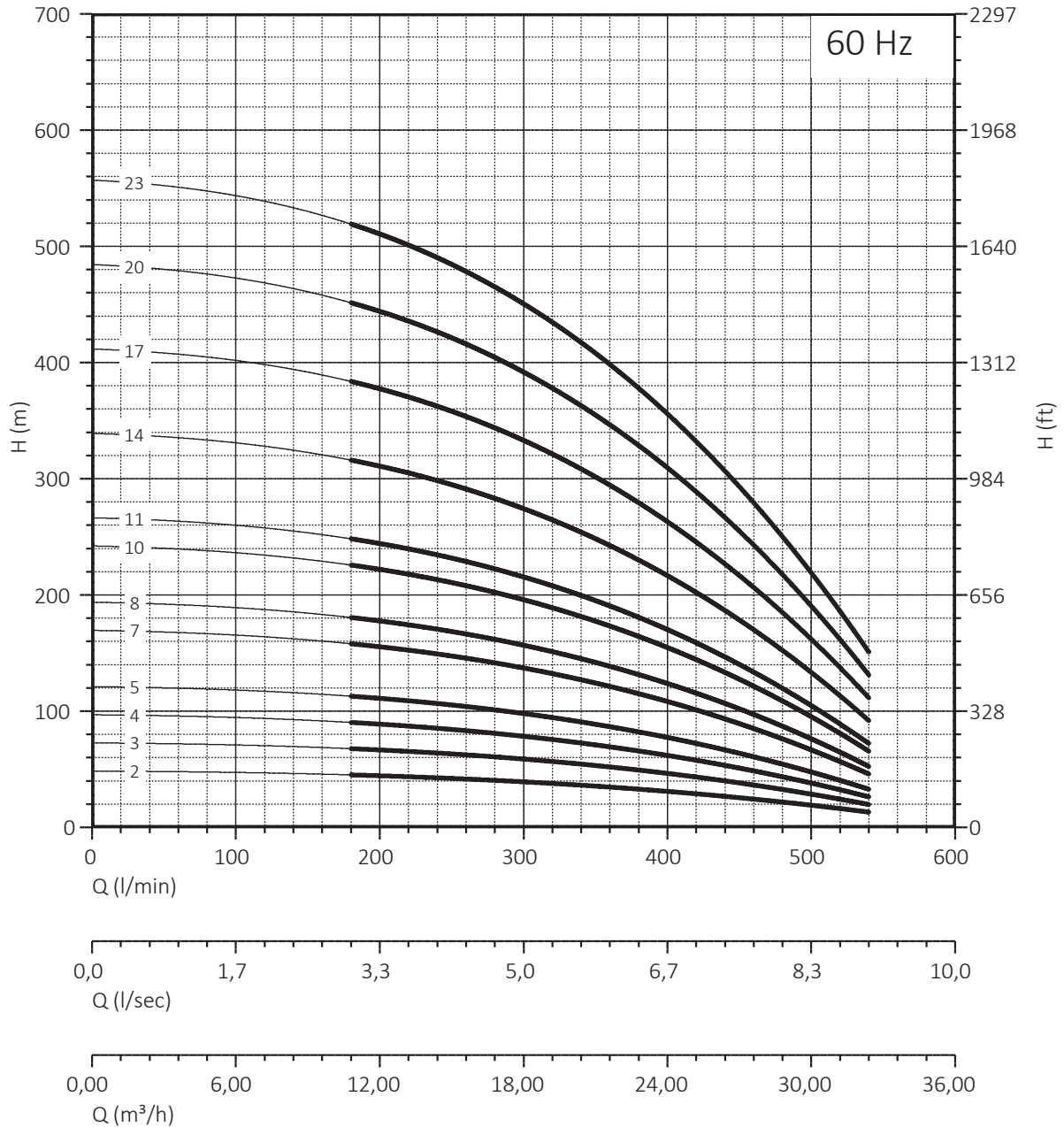
Suction cage and delivery bowl
(with cap valve) in AISI 304 casted

Max 69%
Max 1,45

n% = Pump efficiency
W/st = Stage absorption

6" 140 PR / PRX 16 - HYDRAULIC PERFORMANCES

SERVICE FACTOR : 1,15



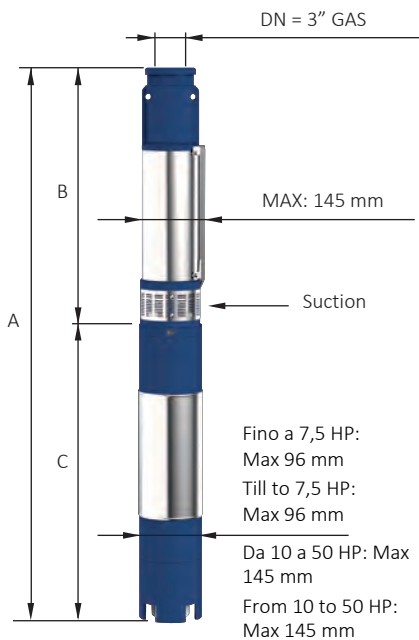
NPSH (m)	25%	50%	75%	100%
140 PR 16 - 140 PRX 16	3	3	4	6

Maximum Sand Content :400gr/m³

6" 140 PR / PRX 24 - HYDRAULIC PERFORMANCES

SERVICE FACTOR : 1,15

Motore - Motor - Moteur Caratteristiche a 3450 rpm				Q=Portata - Capacity - Debit						
Tipo - Type	Power		V 460	l/min	0	240	360	480	600	720
	kW	HP		A	l/sec	0,00	4,00	6,00	8,00	10,00
			m ³ /h		0,0	14,4	21,6	28,8	36,0	43,2
140 PR24 N/02	3,00	4	5,8	H[m]	39	34	31	25	17	8
140 PR24 N/03	4,00	5,5	8,6		59	51	46	38	26	12
140 PR24 N/04	5,50	7,5	10,8		78	67	62	50	34	16
140 PR24 N/06	7,50	10	15,1		117	101	93	75	51	25
140 PR24 N/07	9,20	12,5	18,1		137	118	108	88	60	29
140 PR24 N/08	11,00	15	21,1		156	135	124	100	68	33
140 PR24 N/10	13,00	17,5	24,1		196	168	154	126	85	41
140 PR24 N/12	15,00	20	27,5		235	202	185	151	102	49
140 PR24 N/14	18,50	25	34,4		274	236	216	176	119	58
140 PR24 N/17	22,00	30	40,9		333	286	262	214	145	70
140 PR24 N/20	26,00	35	47,3		391	337	309	251	170	82
140 PR24 N/24	30,00	40	53,8		469	404	371	301	204	99



Dimensioni di ingombro e pesi Overall dimensions and weights					
Tipo - Type	A mm Tri	B mm	C mm Tri	M kg Tri	P kg
140 PR24 N/02	1012	455	557	19	13
140 PR24 N/03	1097	500	597	22	14
140 PR24 N/04	1243	545	698	27	15
140 PR24 N/06	1336	635	701	55	16
140 PR24 N/07	1431	680	751	60	17
140 PR24 N/08	1536	725	811	65	19
140 PR24 N/10	1656	815	841	70	21
140 PR24 N/12	1836	905	931	75	24
140 PR24 N/14	1986	995	991	83	26
140 PR24 N/17	2201	1130	1071	92	28
140 PR24 N/20	2446	1265	1181	100	30
140 PR24 N/24	2696	1445	1251	108	35



140 PRX

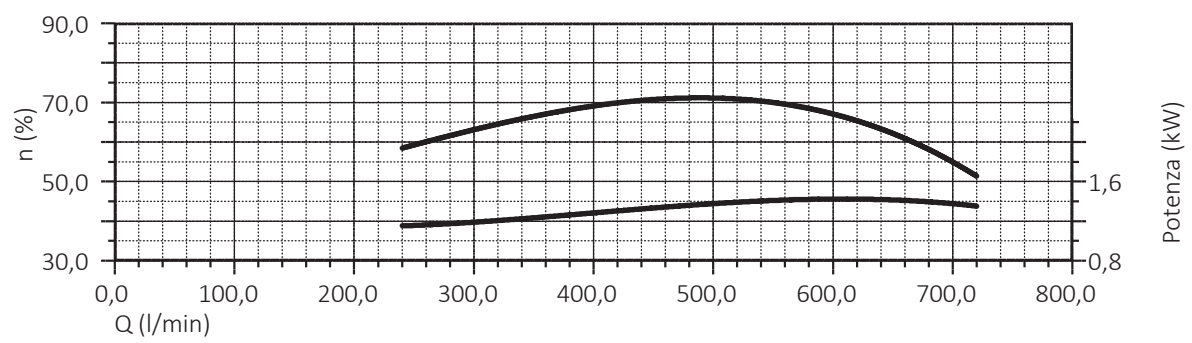
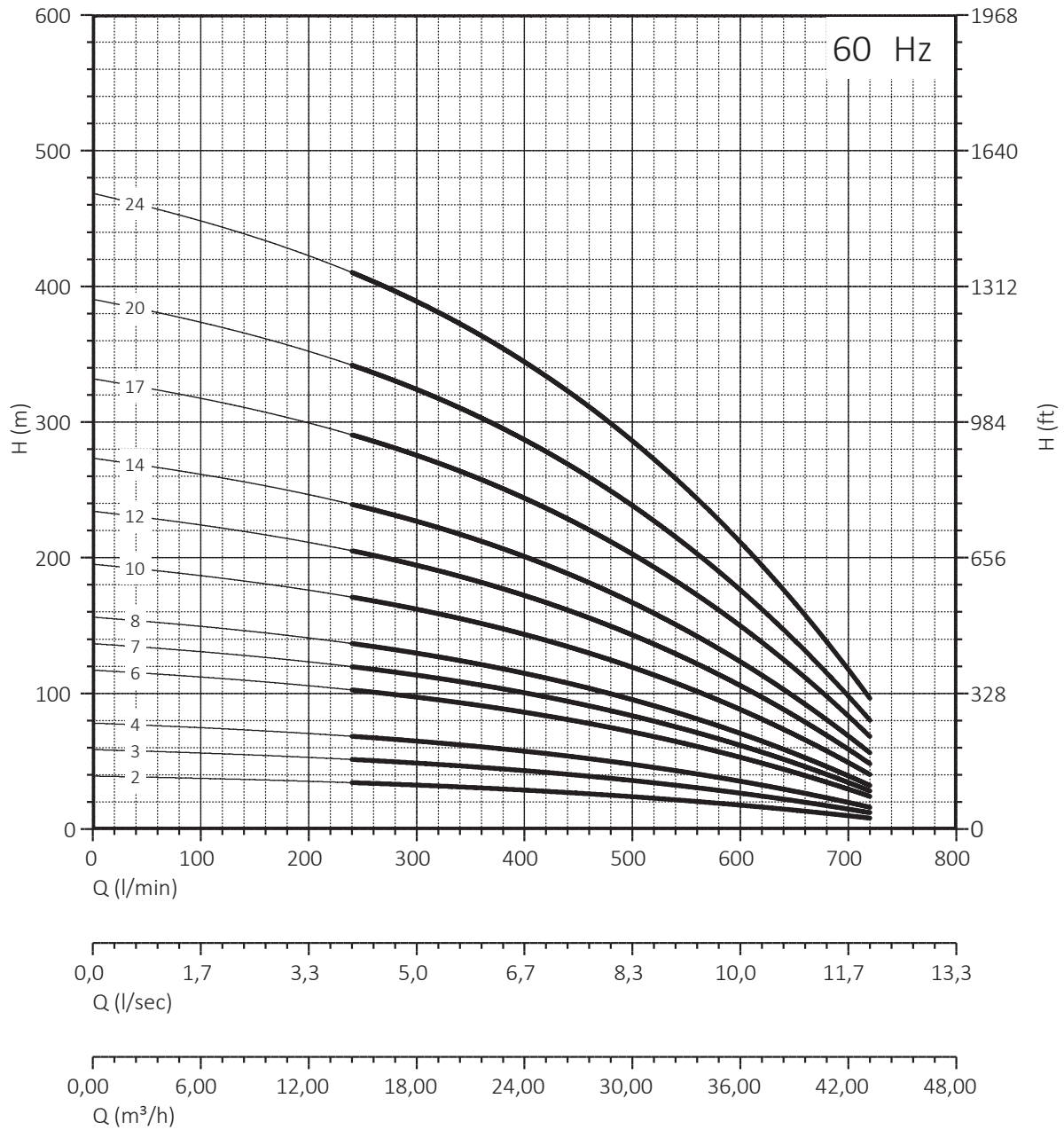
Suction cage and delivery bowl
(with cap valve) in AISI 304 casted

Max 69,5%
Max 1,43

n% = Pump efficiency
W/st = Stage absorption

6" 140 PR / PRX 24 - HYDRAULIC PERFORMANCES

SERVICE FACTOR : 1,15



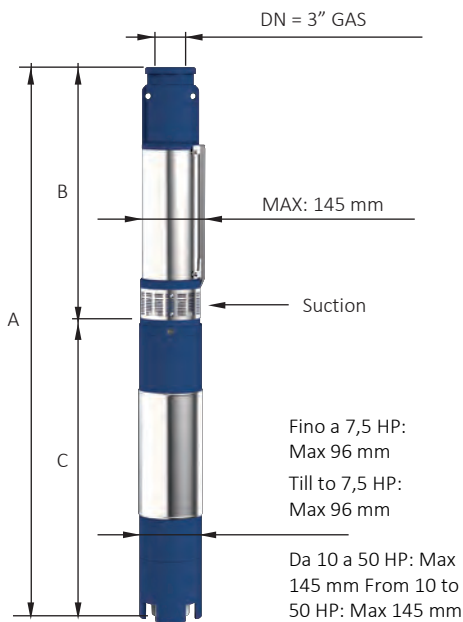
NPSH (m)	25%	50%	75%	100%
140 PR 24 - 140 PRX 24	3	3	4,5	6,6

Maximum Sand Content :400gr/m³

6" 140 PR / PRX 34 - HYDRAULIC PERFORMANCES

SERVICE FACTOR : 1,15

Motor a 3450 rpm				Q= Capacity							
Type	Power		V 460	l/min	0	360	480	600	720	840	960
	kW	HP	A	l/sec	0,00	6,00	8,00	10,00	12,00	14,00	16,00
				m ³ /h	0,0	21,6	28,8	36,0	43,2	50,4	57,6
140 PR34 N/02	5,50	7,5	10,8	H[m]	41	38	35	32	27	21	13
140 PR34 N/03	7,50	10	15,1		61	57	53	48	40	31	19
140 PR34 N/04	9,20	12,5	18,1		81	77	71	63	54	41	25
140 PR34 N/05	11,00	15	21,1		102	96	89	79	67	52	31
140 PR34 N/06	13,00	17,5	24,1		122	115	106	95	80	62	38
140 PR34 N/07	15,00	20	27,5		142	134	124	111	94	72	44
140 PR34 N/08	18,50	25	34,4		162	153	142	127	107	82	50
140 PR34 N/10	22,00	30	40,9		203	192	177	158	134	103	63
140 PR34 N/12	26,00	35	47,3		244	230	213	190	161	124	75
140 PR34 N/14	30,00	40	53,8		284	268	248	222	188	144	88
140 PR34 N/17	37,00	50	67,1		345	326	301	269	228	175	106



Overall dimensions and weights					
Type	A mm Tri	B mm	C mm Tri	M kg Tri	P kg
140 PR34 N/02	1185	487	698	27	16,5
140 PR34 N/03	1249	548	701	55	17
140 PR34 N/04	1360	609	751	60	18
140 PR34 N/05	1481	670	811	65	19
140 PR34 N/06	1572	731	841	70	20
140 PR34 N/07	1723	792	931	75	21
140 PR34 N/08	1844	853	991	83	23
140 PR34 N/10	2046	975	1071	92	26
140 PR34 N/12	2310	1129	1181	100	28
140 PR34 N/14	2502	1251	1251	108	30
140 PR34 N/17	2775	1434	1341	118	33



140 PRX

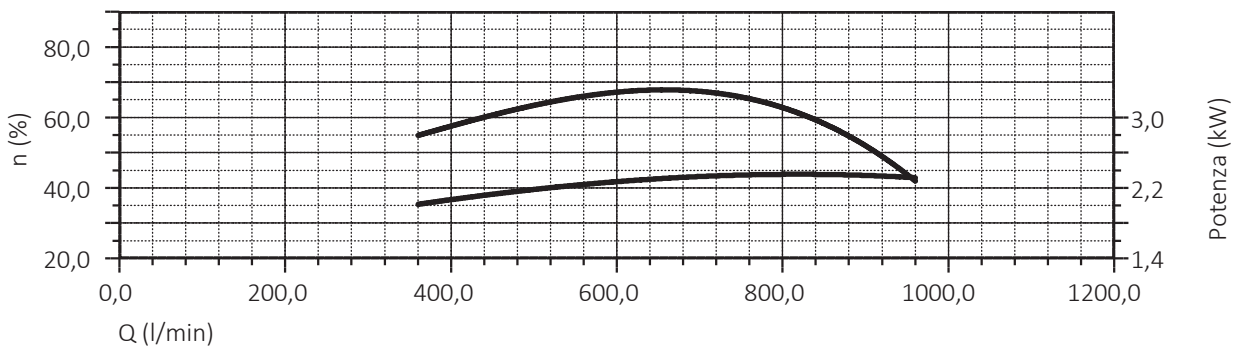
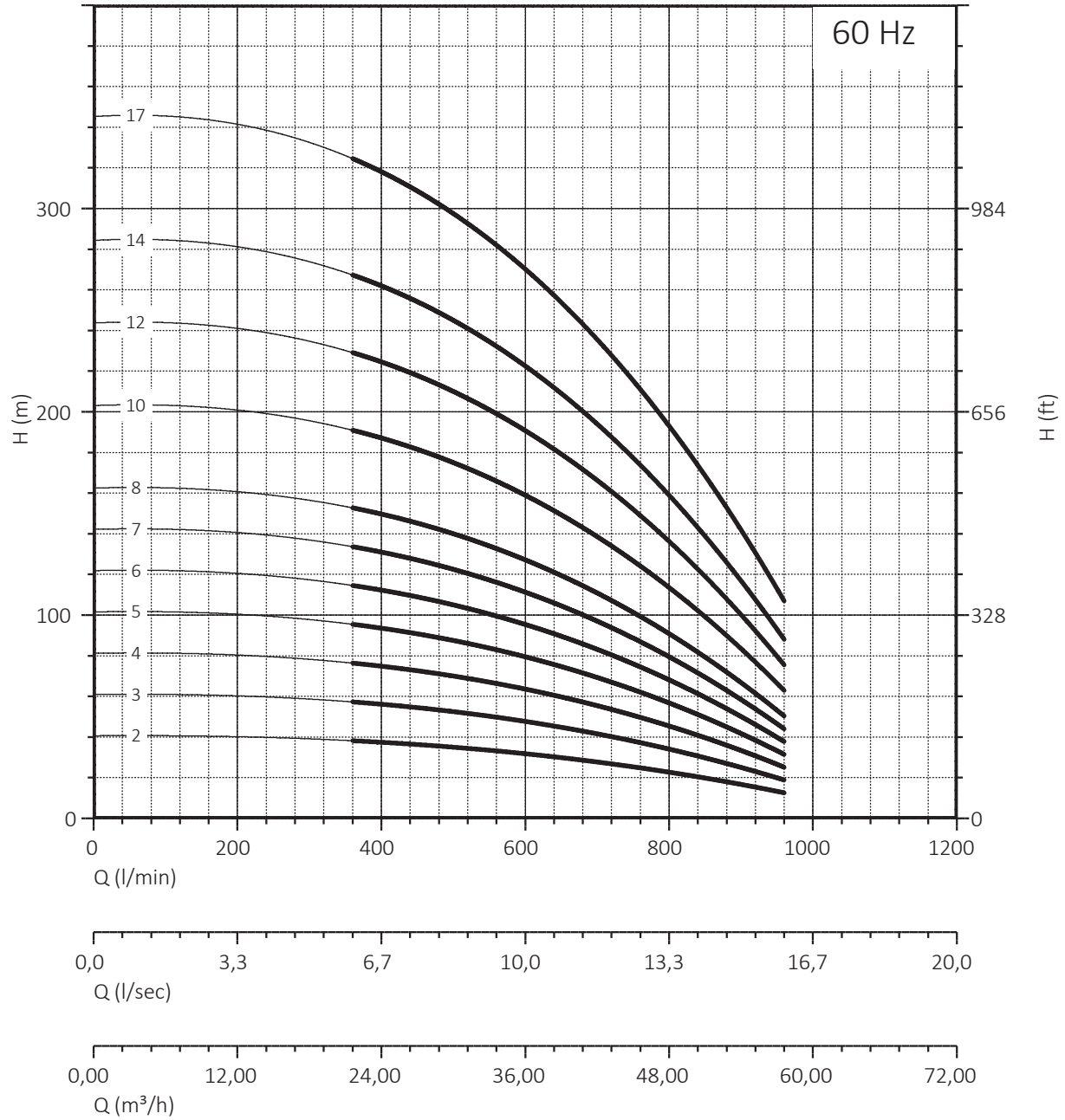
Suction cage and delivery bowl
(with cap valve) in AISI 304 casted

Max 67,5%
Max 2,40

n% = Pump efficiency
W/st = Stage absorption

6" 140 PR / PRX 34 - HYDRAULIC PERFORMANCES

SERVICE FACTOR : 1,15



NPSH (m)	25%	50%	75%	100%
140 PR 34 - 140 PRX 34	3,4	3,4	3,8	8

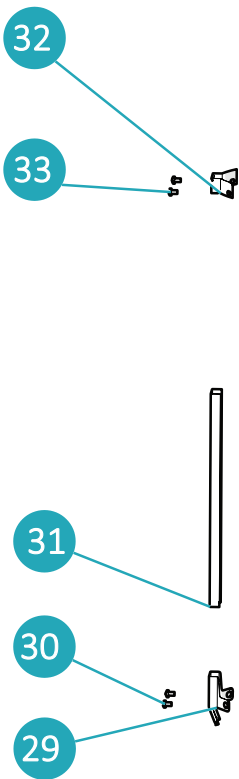
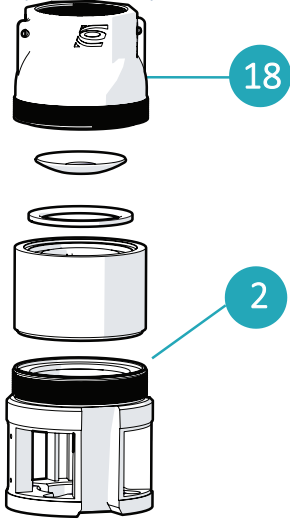
Maximum Sand Content :400gr/m³

SPARE PARTS - 6" 140 PR /PRX

standard version

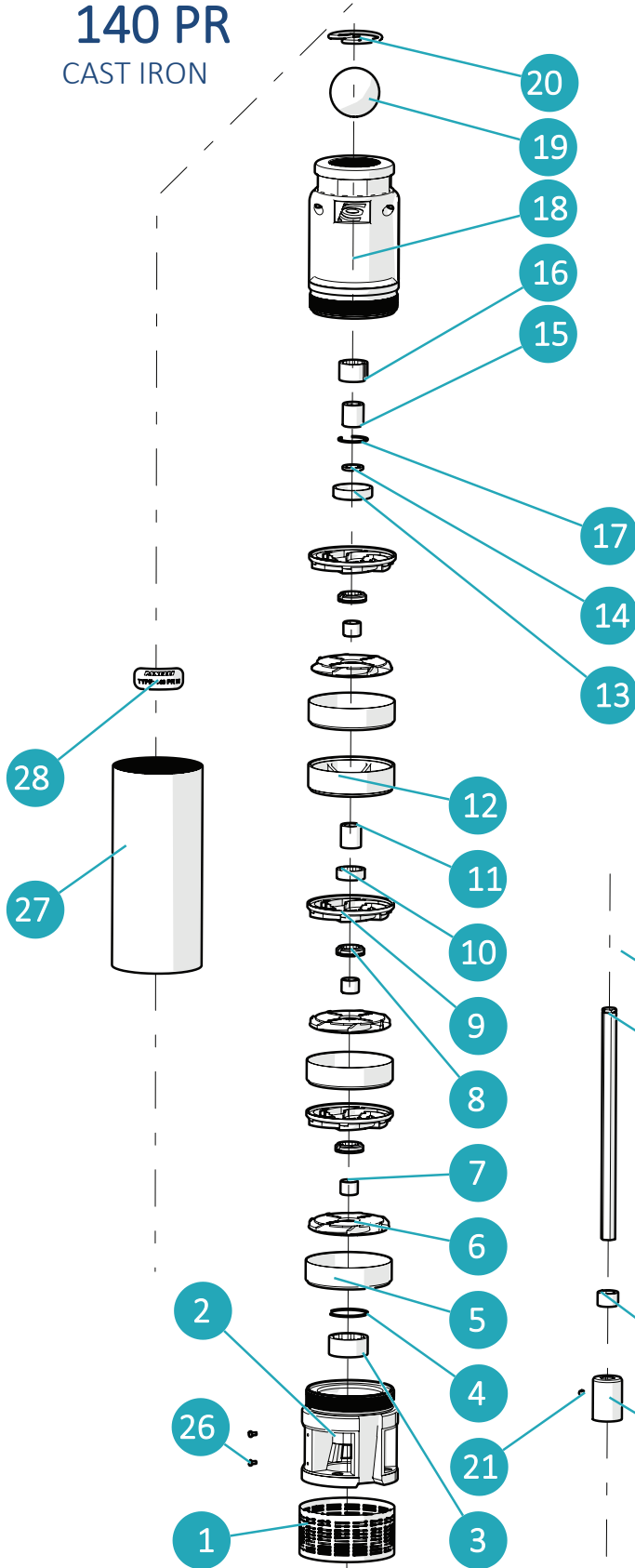
140 PRX

(AISI 304)



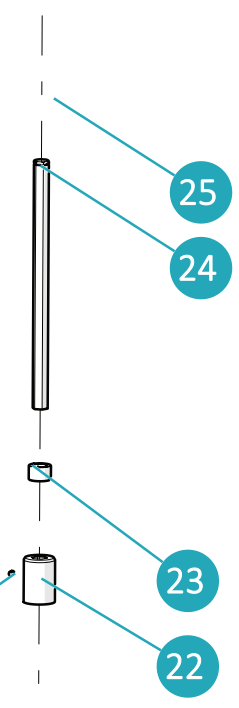
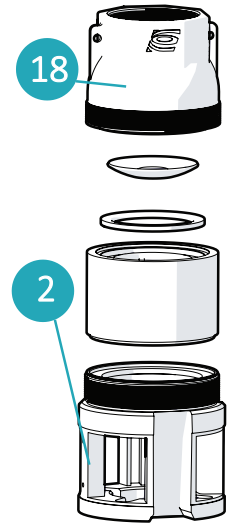
140 PR

CAST IRON



140 PR

with cap valve
(cast iron)



SPARE PARTS - 6" 140 PR /PRX

140 PR				
N.CODE	DESCRIZIONE (Italiano)	MATERIALE (Italiano)	DESCRIPTION (English)	MATERIAL (English)
1	SUCCHERIOLA	ACCIAIO INOX AISI 304	SUCTION STRAINER	AISI 304
2 *	GABBIA DI ASPIRAZIONE	GHISA	SUCTION CAGE	CAST IRON
3	BRONZINA PER GABBIA	GOMMA	BEARING BUSH FOR SUCTION CAGE	RUBBER NBR
4	SEEGER BRONZINA	ACCIAIO INOX AISI 304	SEEGER BEARING BUSH	AISI 304
5	ELEMENTO INTERMEDIO	ACCIAIO INOX AISI 304	INTERMEDIATE CASING	AISI 304
6	GIRANTE	NORYL GFN2	IMPELLER	NORYL GFN2
7	DISTANZIATORE INTERMEDIO	ACCIAIO INOX AISI 304	INTERMEDIATE SPACER	AISI 304
8	BRONZINA DIFFUSORE	GOMMA	DIFFUSER BEARING BUSH	RUBBER NBR
9	DIFFUSORE	NORYL GFN2	DIFFUSER	NORYL GFN2
10	BRONZINA SUPPORTO INTERMEDIO	GOMMA	INTERMEDIATE BEARING BUSH	RUBBER NBR
11	DISTANZIATORE INTERMEDIO	ACCIAIO INOX AISI 304	INTERMEDIATE SPACER	AISI 304
12	SUPPORTO INTERMEDIO	NORYL GFN2	INTERMEDIATE SUPPORT	NORYL GFN2
13	PARASABBIA	NORYL GFN2	SAND GUARD	NORYL GFN2
14	ANELLO DISTANZIALE PARASABBIA	POLICARBONATO	SPACER RING SAND GUARD	POLYCARBONATE
15	DISTANZIATORE SUPERIORE	ACCIAIO INOX AISI 304	UPPER SPACER	AISI 304
16	BRONZINA MANDATA	GOMMA	BEARING BUSH FOR DELIVERY BOWL	RUBBER NBR
17	SEEGER BLOCCA BRONZINA	ACCIAIO INOX AISI 304	SEEGER BEARING BUSH	AISI 304
18 *	MANDATA	GHISA	DELIVERY BOWL	CAST IRON
19	SFERA	GOMMA 70 SHORE	BALL	RUBBER NBR 70 SHORE
20	ANELLO TENUTA SFERA	ACCIAIO INOX AISI 304	STOP RING FOR DELIVERY BOWL	AISI 304
21	GRANO PER GIUNTO	ACCIAIO INOX AISI 304	SCREW	AISI 304
22	GIUNTO DI TRAINO	ACCIAIO INOX AISI 304	JOINT	AISI 304
23	DISTANZIATORE PRIMA GIRANTE	POLICARBONATO	SPACER FIRST IMPELLER	POLYCARBONATE
24	ALBERO POMPA	ACCIAIO INOX AISI 304	PUMP SHAFT	AISI 420
25	SEEGER	ACCIAIO INOX AISI 304	SEEGER	AISI 304
26	N.2 VITI M4 X 8 PER SUCCHERUOLA	ACCIAIO INOX AISI 304	N.2 SCREW M4X8 SUCTION STRAINER	AISI 304
27	CAMICIA	ACCIAIO INOX AISI 304	SLEEVE	AISI 304
28	ETICHETTA ADESIVA	POLIESTERE	ADHESIVE LABEL	POLYESTER
29	STAFFETTA INFERIORE	ACCIAIO INOX AISI 304	LOWER FLANGE	AISI 304
30	N.2 VITI M4 X 10 PER STAFFETTA INFERIORE	ACCIAIO INOX AISI 304	N.2 SCREW M4X10 FOR LOWER FLANGE	AISI 304
31	COPRICAVO	ACCIAIO INOX AISI 304	COVER CABLE	AISI 304
32	STAFFETTA SUPERIORE	ACCIAIO INOX AISI 304	UPPER FLANGE	AISI 304
33	N.2 VITI M4 X 10 PER STAFFETTA SUPERIORE	ACCIAIO INOX AISI 304	N.2 SCREW M4X10 FOR UPPER FLANGE	AISI 304

N.CODE	DESCRIPTION (Français)	MATÉRIEL (Français)	DESCRIPCIÓN (Español)	MATERIAL (Español)
1	CREPINE	ACIER INOXYDABLE AISI 304	REJILLA	ACERO INOXYDABLE AISI 304
2 *	CAGE D'ASPIRATION	FORTE	CUERPO DE ASPIRACION	HIERRO FUNDIDO
3	BEARING BUSH POUR CAGE D'ASPIRATION	CAOUTCHOUC	COJINETE CUERPO DE ASPIRACION	GOMA NBR
4	SEEGER BEARING BUSH	ACIER INOXYDABLE AISI 304	SEEGER POR COJINETE	ACERO INOXYDABLE AISI 304
5	ELEMENT INTERMEDIARE	ACIER INOXYDABLE AISI 304	ELEMENTO INTERMEDIO	ACERO INOXYDABLE AISI 304
6	ROUE	NORYL GFN2	IMPULSOR	NORYL GFN2
7	ENTRETOISE INTERMEDIARE	ACIER INOXYDABLE AISI 304	DISTANCIADOR INTERMEDIO	ACERO INOXYDABLE AISI 304
8	DIFFUSEUR BEARING BUSH	CAOUTCHOUC	COJINETE DIFUSOR	GOMA NBR
9	DIFFUSEUR	NORYL GFN2	DIFUSOR	NORYL GFN2
10	COUSSINET BEARING BUSH	CAOUTCHOUC	COJINETE SOPORTE INTERMEDIO	GOMA NBR
11	ENTRETOISE INTERMEDIARE	ACIER INOXYDABLE AISI 304	DISTANCIADOR INTERMEDIO	ACERO INOXYDABLE AISI 304
12	SUPPORT INTERMEDIARE	NORYL GFN2	SOPORTE INTERMEDIO	NORYL GFN2
13	PARA SABLE	NORYL GFN2	PROTECTOR ARENA	NORYL GFN2
14	BAGUE ENTRETOISE PARA SABLE	TECHNOPOLYMER	ANILLO DISTANCIADOR PROTECTOR ARENA	TECHNOPOLYMER
15	BRIDE ENTRETOISE	ACIER INOXYDABLE AISI 304	DISTANCIADOR SUPERIOR	ACERO INOXYDABLE AISI 304
16	BEARING BUSH POUR REFOULEMENT	CAOUTCHOUC	COJINETE CUERPO DE IMPULSION	RUBBER NBR
17	SEEGER BEARING BUSH	ACIER INOXYDABLE AISI 304	SEEGER COJINETE	ACERO INOXYDABLE AISI 304
18 *	REFOULEMENT	FORTE	CUERPO DE IMPULSION	HIERRO FUNDIDO
19	BOULE	CAOUTCHOUC 70 SHORE	ESFERA	RUBBER NBR 70 SHORE
20	ANNEAU DE SUBSISTANCE	ACIER INOXYDABLE AISI 304	ANILLO PARA ESFERA	ACERO INOXYDABLE AISI 304
21	VIS	ACIER INOXYDABLE AISI 304	TORNILLO POR ACOPLAMIENTO	ACERO INOXYDABLE AISI 304
22	JOINT	ACIER INOXYDABLE AISI 304	ACOPLAMIENTO	ACERO INOXYDABLE AISI 304
23	ENTRETOISE PREMIERE ROUE	TECHNOPOLYMER	DISTANCIADOR PRIMER IMPULSOR	TECHNOPOLYMER
24	ARBRE POMPE	ACIER INOXYDABLE AISI 304	EJE DE BOMBA	ACERO INOXYDABLE AISI 420
25	SEEGER	ACIER INOXYDABLE AISI 304	SEEGER	ACERO INOXYDABLE AISI 304
26	N.2 VIS M4X8 POUR CREPINE	ACIER INOXYDABLE AISI 304	N.2 TORNILLOS REJILLA	ACERO INOXYDABLE AISI 304
27	CHEMISE	ACIER INOXYDABLE AISI 304	CAMISA	ACERO INOXYDABLE AISI 304
28	ADHESIVE ÉTIQUETTE	PLASTIQUE	ETIQUETA	PLASTICO
29	BRIDE INFERIEURE	ACIER INOXYDABLE AISI 304	GRAPA INFERIOR	ACERO INOXYDABLE AISI 304
30	N.2 VIS M4X10 POUR BRIDE INFERIEURE	ACIER INOXYDABLE AISI 304	N.2 TORNILLOS GRAPA INFERIOR	ACERO INOXYDABLE AISI 304
31	PROTECTION CABLE	ACIER INOXYDABLE AISI 304	PARACABLE	ACERO INOXYDABLE AISI 304
32	BRIDE SUPERIEURE	ACIER INOXYDABLE AISI 304	GRAPA SUPERIOR	ACERO INOXYDABLE AISI 304
33	N.2 VIS M4X10 POUR BRIDE SUPERIEURE	ACIER INOXYDABLE AISI 304	N.2 TORNILLOS GRAPA SUPERIOR	ACERO INOXYDABLE AISI 304

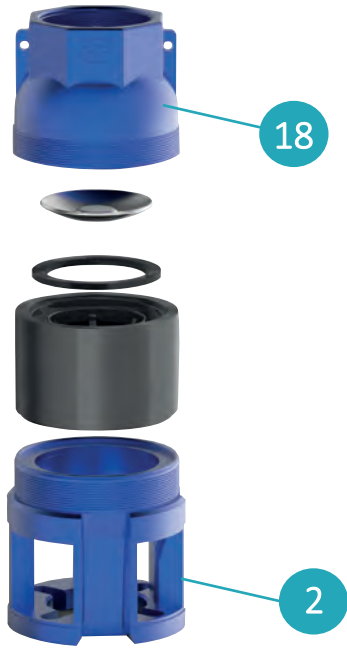
*** 140 PRX**

ACCIAIO INOX AISI 304
 AISI 304
 ACIER INOXYDABLE AISI 304 ACERO
 INOXYDABLE AISI 304

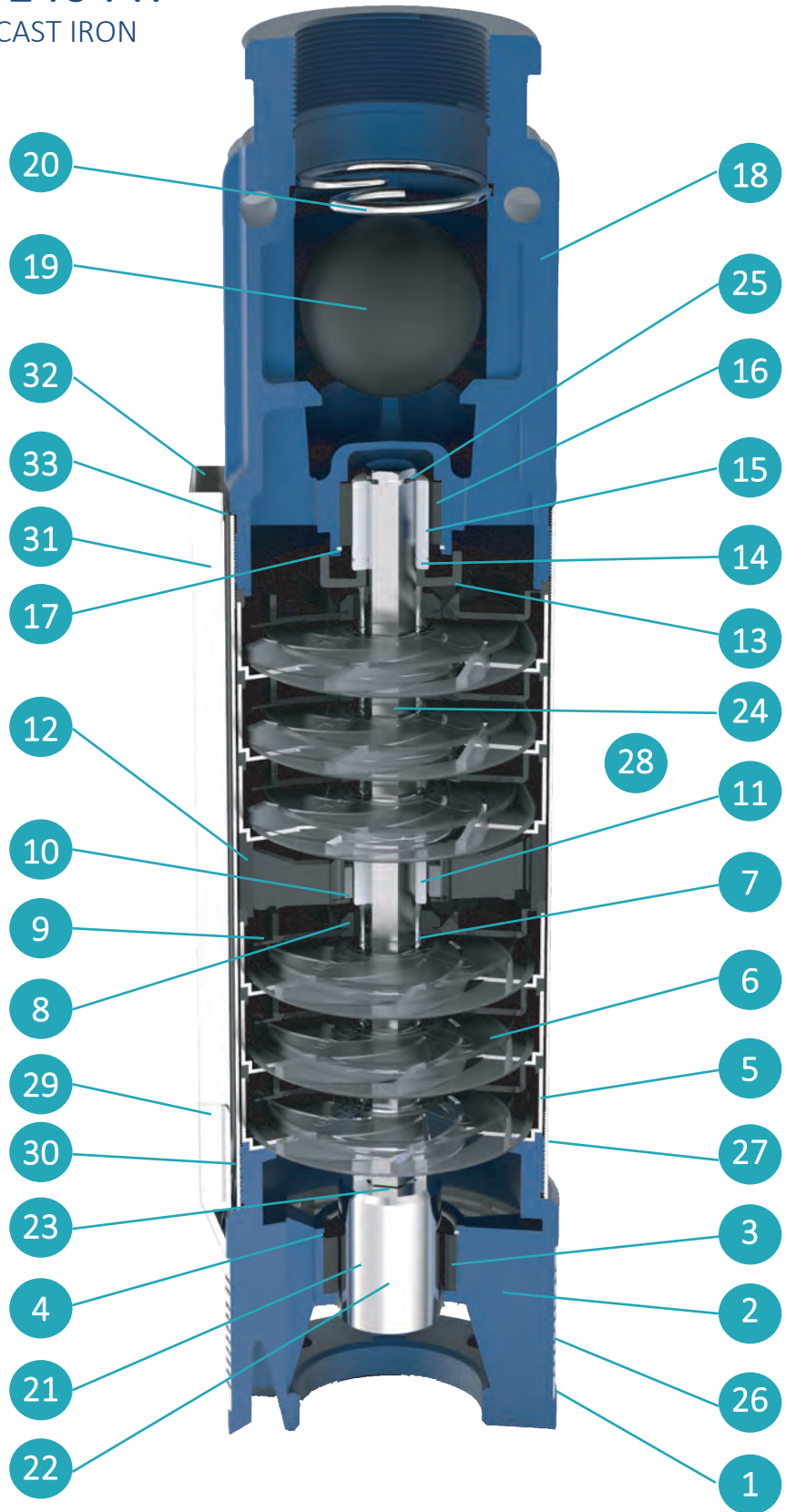
SPARE PARTS - 6" 140 PR /PRX

standard version

140 PR
with cap valve
(cast iron)



140 PR
CAST IRON



140 PRX
AISI 304



SPARE PARTS - 6" 140 PR /PRX

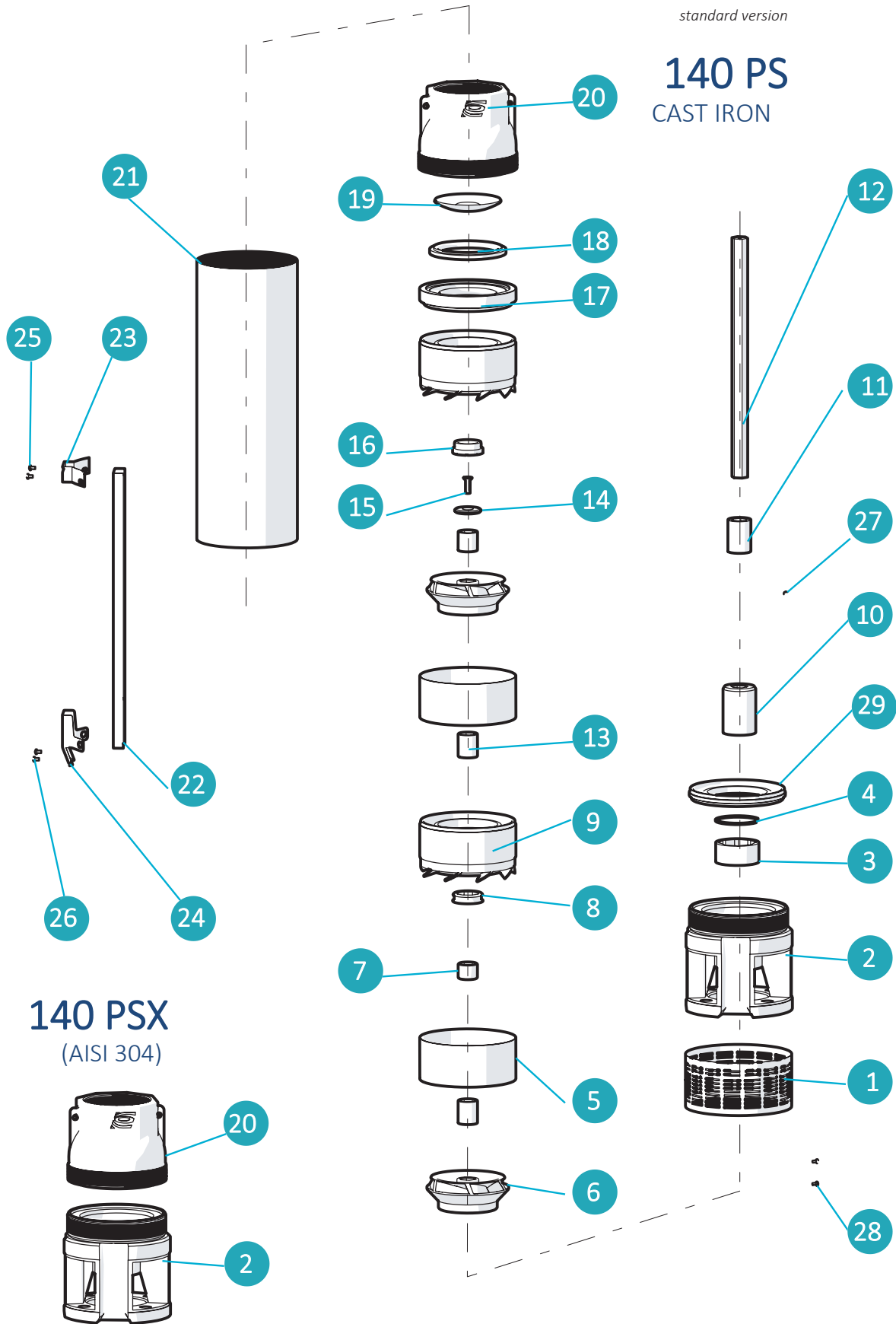
140 PR				
N.CODE	DESCRIZIONE (Italiano)	MATERIALE (Italiano)	DESCRIPTION (English)	MATERIAL (English)
1	SUCCHERIOLA	ACCIAIO INOX AISI 304	SUCTION STRAINER	AISI 304
2 *	GABBIA DI ASPIRAZIONE	GHISA	SUCTION CAGE	CAST IRON
3	BRONZINA PER GABBIA	GOMMA	BEARING BUSH FOR SUCTION CAGE	RUBBER NBR
4	SEEGER BRONZINA	ACCIAIO INOX AISI 304	SEEGER BEARING BUSH	AISI 304
5	ELEMENTO INTERMEDIO	ACCIAIO INOX AISI 304	INTERMEDIATE CASING	AISI 304
6	GIRANTE	NORYL GFN2	IMPELLER	NORYL GFN2
7	DISTANZIATORE INTERMEDIO	ACCIAIO INOX AISI 304	INTERMEDIATE SPACER	AISI 304
8	BRONZINA DIFFUSORE	GOMMA	DIFFUSER BEARING BUSH	RUBBER NBR
9	DIFFUSORE	NORYL GFN2	DIFFUSER	NORYL GFN2
10	BRONZINA SUPPORTO INTERMEDIO	GOMMA	INTERMEDIATE BEARING BUSH	RUBBER NBR
11	DISTANZIATORE INTERMEDIO	ACCIAIO INOX AISI 304	INTERMEDIATE SPACER	AISI 304
12	SUPPORTO INTERMEDIO	NORYL GFN2	INTERMEDIATE SUPPORT	NORYL GFN2
13	PARASABBIA	NORYL GFN2	SAND GUARD	NORYL GFN2
14	ANELLO DISTANZIALE PARASABBIA	POLICARBONATO	SPACER RING SAND GUARD	POLYCARBONATE
15	DISTANZIATORE SUPERIORE	ACCIAIO INOX AISI 304	UPPER SPACER	AISI 304
16	BRONZINA MANDATA	GOMMA	BEARING BUSH FOR DELIVERY BOWL	RUBBER NBR
17	SEEGER BLOCCA BRONZINA	ACCIAIO INOX AISI 304	SEEGER BEARING BUSH	AISI 304
18 *	MANDATA	GHISA	DELIVERY BOWL	CAST IRON
19	SFERA	GOMMA 70 SHORE	BALL	RUBBER NBR 70 SHORE
20	ANELLO TENUTA SFERA	ACCIAIO INOX AISI 304	STOP RING FOR DELIVERY BOWL	AISI 304
21	GRANO PER GIUNTO	ACCIAIO INOX AISI 304	SCREW	AISI 304
22	GIUNTO DI TRAINO	ACCIAIO INOX AISI 304	JOINT	AISI 304
23	DISTANZIATORE PRIMA GIRANTE	POLICARBONATO	SPACER FIRST IMPELLER	POLYCARBONATE
24	ALBERO POMPA	ACCIAIO INOX AISI 304	PUMP SHAFT	AISI 420
25	SEEGER	ACCIAIO INOX AISI 304	SEEGER	AISI 304
26	N.2 VITI M4 X 8 PER SUCCHERUOLA	ACCIAIO INOX AISI 304	N.2 SCREW M4X8 SUCTION STRAINER	AISI 304
27	CAMICIA	ACCIAIO INOX AISI 304	SLEEVE	AISI 304
28	ETICHETTA ADESIVA	POLIESTERE	ADHESIVE LABEL	POLYESTER
29	STAFFETTA INFERIORE	ACCIAIO INOX AISI 304	LOWER FLANGE	AISI 304
30	N.2 VITI M4 X 10 PER STAFFETTA INFERIORE	ACCIAIO INOX AISI 304	N.2 SCREW M4X10 FOR LOWER FLANGE	AISI 304
31	COPRICAVO	ACCIAIO INOX AISI 304	COVER CABLE	AISI 304
32	STAFFETTA SUPERIORE	ACCIAIO INOX AISI 304	UPPER FLANGE	AISI 304
33	N.2 VITI M4 X 10 PER STAFFETTA SUPERIORE	ACCIAIO INOX AISI 304	N.2 SCREW M4X10 FOR UPPER FLANGE	AISI 304

N.CODE	DESCRIPTION (Français)	MATÉRIEL (Français)	DESCRIPCIÓN (Español)	MATERIAL (Español)
1	CREPINE	ACIER INOXYDABLE AISI 304	REJILLA	ACERO INOXYDABLE AISI 304
2 *	CAGE D'ASPIRATION	FORTE	CUERPO DE ASPIRACION	HIERRO FUNDIDO
3	BEARING BUSH POUR CAGE D'ASPIRATION	CAOUTCHOUC	COJINETE CUERPO DE ASPIRACION	GOMA NBR
4	SEEGER BEARING BUSH	ACIER INOXYDABLE AISI 304	SEEGER POR COJINETE	ACERO INOXYDABLE AISI 304
5	ELEMENT INTERMEDIARE	ACIER INOXYDABLE AISI 304	ELEMENTO INTERMEDIO	ACERO INOXYDABLE AISI 304
6	ROUE	NORYL GFN2	IMPULSOR	NORYL GFN2
7	ENTRETOISE INTERMEDIARE	ACIER INOXYDABLE AISI 304	DISTANCIADOR INTERMEDIO	ACERO INOXYDABLE AISI 304
8	DIFFUSEUR BEARING BUSH	CAOUTCHOUC	COJINETE DIFUSOR	GOMA NBR
9	DIFFUSEUR	NORYL GFN2	DIFUSOR	NORYL GFN2
10	COUSSINET BEARING BUSH	CAOUTCHOUC	COJINETE SOPORTE INTERMEDIO	GOMA NBR
11	ENTRETOISE INTERMEDIARE	ACIER INOXYDABLE AISI 304	DISTANCIADOR INTERMEDIO	ACERO INOXYDABLE AISI 304
12	SUPPORT INTERMEDIARE	NORYL GFN2	SOPORTE INTERMEDIO	NORYL GFN2
13	PARA SABLE	NORYL GFN2	PROTECTOR ARENA	NORYL GFN2
14	BAGUE ENTRETOISE PARA SABLE	TECHNOPOLYMER	ANILLO DISTANCIADOR PROTECTOR ARENA	TECHNOPOLYMER
15	BRIDE ENTRETOISE	ACIER INOXYDABLE AISI 304	DISTANCIADOR SUPERIOR	ACERO INOXYDABLE AISI 304
16	BEARING BUSH POUR REFOULEMENT	CAOUTCHOUC	COJINETE CUERPO DE IMPULSION	RUBBER NBR
17	SEEGER BEARING BUSH	ACIER INOXYDABLE AISI 304	SEEGER COJINETE	ACERO INOXYDABLE AISI 304
18 *	REFOULEMENT	FORTE	CUERPO DE IMPULSION	HIERRO FUNDIDO
19	BOULE	CAOUTCHOUC 70 SHORE	ESFERA	RUBBER NBR 70 SHORE
20	ANNEAU DE SUBSISTANCE	ACIER INOXYDABLE AISI 304	ANILLO PARA ESFERA	ACERO INOXYDABLE AISI 304
21	VIS	ACIER INOXYDABLE AISI 304	TORNILLO POR ACOPLAMIENTO	ACERO INOXYDABLE AISI 304
22	JOINT	ACIER INOXYDABLE AISI 304	ACOPLAMIENTO	ACERO INOXYDABLE AISI 304
23	ENTRETOISE PREMIERE ROUE	TECHNOPOLYMER	DISTANCIADOR PRIMER IMPULSOR	TECHNOPOLYMER
24	ARBRE POMPE	ACIER INOXYDABLE AISI 304	EJE DE BOMBA	ACERO INOXYDABLE AISI 420
25	SEEGER	ACIER INOXYDABLE AISI 304	SEEGER	ACERO INOXYDABLE AISI 304
26	N.2 VIS M4X8 POUR CREPINE	ACIER INOXYDABLE AISI 304	N.2 TORNILLOS REJILLA	ACERO INOXYDABLE AISI 304
27	CHEMISE	ACIER INOXYDABLE AISI 304	CAMISA	ACERO INOXYDABLE AISI 304
28	ADHESIVE ÉTIQUETTE	PLASTIQUE	ETIQUETA	PLASTICO
29	BRIDE INFERIEURE	ACIER INOXYDABLE AISI 304	GRAPA INFERIOR	ACERO INOXYDABLE AISI 304
30	N.2 VIS M4X10 POUR BRIDE INFERIEURE	ACIER INOXYDABLE AISI 304	N.2 TORNILLOS GRAPA INFERIOR	ACERO INOXYDABLE AISI 304
31	PROTECTION CABLE	ACIER INOXYDABLE AISI 304	PARACABLE	ACERO INOXYDABLE AISI 304
32	BRIDE SUPERIEURE	ACIER INOXYDABLE AISI 304	GRAPA SUPERIOR	ACERO INOXYDABLE AISI 304
33	N.2 VIS M4X10 POUR BRIDE SUPERIEURE	ACIER INOXYDABLE AISI 304	N.2 TORNILLOS GRAPA SUPERIOR	ACERO INOXYDABLE AISI 304

*** 140 PRX**

ACCIAIO INOX AISI 304
 AISI 304
 ACIER INOXYDABLE AISI 304 ACERO
 INOXYDABLE AISI 304

SPARE PARTS - 6" 140 PS/PSX



SPARE PARTS - 6" 140 PS/PSX

140 PS				
N.CODE	DESCRIZIONE (Italiano)	MATERIALE (Italiano)	DESCRIPTION (English)	MATERIAL (English)
1	SUCCHERUOLA	ACCIAIO INOX AISI 304	SUCTION STRAINER	AISI 304
2 *	GABBIA DI ASPIRAZIONE	GHISA	SUCTION CAGE	CAST IRON
3	BRONZINA PER GABBIA	GOMMA	BEARING BUSH FOR SUCTION CAGE	RUBBER NBR
4	SEEGER BRONZINA	ACCIAIO INOX AISI 304	SEEGER BEARING BUSH	AISI 304
5	ELEMENTO INTERMEDIO	ACCIAIO INOX AISI 304	INTERMEDIATE CASING	AISI 304
6	GIRANTE	NORYL GFN2	IMPELLER	NORYL GFN2
7	DISTANZIATORE INTERMEDIO	ACCIAIO INOX AISI 304	INTERMEDIATE SPACER	AISI 304
8	BRONZINA DIFFUSORE	GOMMA	DIFFUSER BEARING BUSH	RUBBER NBR
9	DIFFUSORE	NORYL GFN2 + ACCIAIO INOX AISI 304	DIFFUSER	NORYL GFN2 + RING AISI 304
10	GIUNTO DI TRAINO	ACCIAIO INOX AISI 304	JOINT	AISI 304
11	DISTANZIATORE PRIMA GIRANTE	NORYL GFN2	SPACER FIRST IMPELLER	NORYL GFN2
12	ALBERO POMPA	ACCIAIO INOX AISI 420	PUMP SHAFT	AISI 420
13	DISTANZIATORE	NORYL GFN2	SPACER	NORYL GFN2
14	DISCO ACCIAIO	ACCIAIO INOX AISI 304	RING	AISI 304
15	VITE	ACCIAIO INOX AISI 304	SCREW	AISI 304
16	CONTROSOSPENSIONE	PTFE+25%CARBONE	COUNTERTHRUST	PTFE+25%CARBON
17	ANELLO GUARNIZIONE MANDATA	NORYL GFN2	RING GASKET VALVE	NORYL GFN2
18	GUARNIZIONE FARFALLA	GOMMA	GASKET VALVE	RUBBER NBR
19	FARFALLA	ACCIAIO INOX AISI 304	CAP VALVE	AISI 304
20 *	MANDATA	GHISA	DELIVERY BOWL	CAST IRON
21	CAMICIA	ACCIAIO INOX AISI 304	SLEEVE	AISI 304
22	COPRICAPO	ACCIAIO INOX AISI 304	COVER CABLE	AISI 304
23	STAFFETTA SUPERIORE	ACCIAIO INOX AISI 304	UPPER FLANGE	AISI 304
24	STAFFETTA INFERIORE	ACCIAIO INOX AISI 304	LOWER FLANGE	AISI 304
25	N.2 VITI M4 X 10 PER STAFFETTA SUPERIORE	ACCIAIO INOX AISI 304	N.2 SCREW M4X10 FOR UPPER FLANGE	AISI 304
26	N.2 VITI M4 X 10 PER STAFFETTA INFERIORE	ACCIAIO INOX AISI 304	N.2 SCREW M4X10 FOR LOWER FLANGE	AISI 304
27	GRANO PER GIUNTO	ACCIAIO INOX AISI 304	SCREW	AISI 304
28	N.2 VITI M4 X 8 PER SUCCHERUOLA	ACCIAIO INOX AISI 304	N.2 SCREW M4X8 SUCTION STRAINER	AISI 304
29	ANELLO RACCORDO GABBIA	NORYL GFN2 + ACCIAIO INOX AISI 304	RING FOR SUCTION CAGE	NORYL GFN2 + RING AISI 304

N.CODE	DESCRIPTION (Français)	MATÉRIEL (Français)	DESCRIPCIÓN (Español)	MATERIAL (Español)
1	CREPINE	ACIER INOXYDABLE AISI 304	REJILLA	ACERO INOXYDABLE AISI 304
2 *	CAGE D'ASPIRATION	FORGE	CUERPO DE ASPIRACION	HIERRO FUNDIDO
3	BEARING BUSH POUR CAGE D'ASPIRATION	CAOUTCHOUC	COJINETE CUERPO DE ASPIRACION	GOMA NBR
4	SEEGER BEARING BUSH	ACIER INOXYDABLE AISI 304	SEEGER POR COJINETE	ACERO INOXYDABLE AISI 304 ACERO
5	ELEMENT INTERMEDIARE	ACIER INOXYDABLE AISI 304	ELEMENTO INTERMEDIO	INOXYDABLE AISI 304
6	ROUE	NORYL GFN2	IMPULSOR	NORYL GFN2
7	ENTRETOISE INTERMEDIARE	ACIER INOXYDABLE AISI 304	DISTANCIADOR INTERMEDIO	ACERO INOXYDABLE AISI 304
8	DIFFUSEUR BEARING BUSH	CAOUTCHOUC	COJINETE DIFUSOR	GOMA NBR
9	DIFFUSEUR	NORYL GFN2 + ACIER INOXYDABLE AISI 304	DIFUSOR	NORYL GFN2 + ACERO INOXYDABLE AISI 304
10	JOINT	ACIER INOXYDABLE AISI 304	ACOPLAMIENTO	ACERO INOXYDABLE AISI 304
11	ENTRETOISE PREMIERE ROUE	NORYL GFN2	DISTANCIADOR PRIMER IMPULSOR	NORYL GFN2
12	ARBRE POMPE	ACIER INOXYDABLE AISI 420	EJE DE BOMBA	ACERO INOXYDABLE AISI 420
13	ENTRETOISE	NORYL GFN2	DISTANCIADOR	NORYL GFN2
14	RING	ACIER INOXYDABLE AISI 304	ANILLO EN ACERO	ACERO INOXYDABLE AISI 304
15	VIS	ACIER INOXYDABLE AISI 304	TORNILLO	ACERO INOXYDABLE AISI 304
16	CONTRESUSPENSION	PTFE + 25% GRAPHITE	CONTRA-SUSPENSION	PTFE+25%CARBON
17	ANNEAU VALVE GASKET	NORYL GFN2	JUNTA PARA VALVULA	NORYL GFN2
18	BAGUE VALVE GASKET	CAOUTCHOUC	JUNTA VALVULA	GOMA NBR
19	PLAT	ACIER INOXYDABLE AISI 304	VALVULA	ACERO INOXYDABLE AISI 304
20 *	REFOULEMENT	FORGE	CUERPO DE IMPULSION	HIERRO FUNDIDO
21	CHEMISE	ACIER INOXYDABLE AISI 304	CAMISA	ACERO INOXYDABLE AISI 304
22	PROTECTION CABLE	ACIER INOXYDABLE AISI 304	PARACABLE	ACERO INOXYDABLE AISI 304
23	BRIDE SUPERIEURE	ACIER INOXYDABLE AISI 304	GRAPA SUPERIOR	ACERO INOXYDABLE AISI 304
24	BRIDE INFERIEURE	ACIER INOXYDABLE AISI 304	GRAPA INFERIOR	ACERO INOXYDABLE AISI 304
25	N.2 VIS M4X10 POUR BRIDE SUPERIEURE	ACIER INOXYDABLE AISI 304	N.2 TORNILLOS GRAPA SUPERIOR	ACERO INOXYDABLE AISI 304
26	N.2 VIS M4X10 POUR BRIDE INFERIEURE	ACIER INOXYDABLE AISI 304	N.2 TORNILLOS GRAPA INFERIOR	ACERO INOXYDABLE AISI 304
27	VIS	ACIER INOXYDABLE AISI 304	TORNILLO POR ACOPLAMIENTO	ACERO INOXYDABLE AISI 304
28	N.2 VIS M4X8 POUR CREPINE	ACIER INOXYDABLE AISI 304	N.2 TORNILLOS REJILLA	ACERO INOXYDABLE AISI 304
29	ANNEAU FOR CAGE D'ASPIRATION	NORYL GFN2 + ACIER INOXYDABLE AISI 304	ANILLO CUERPO DE ASPIRACION	NORYL GFN2 + ACERO INOXYDABLE AISI 304

*** 140 PSX**

ACCIAIO INOX AISI 304
AISI 304
ACIER INOXYDABLE AISI 304 ACERO
INOXYDABLE AISI 304

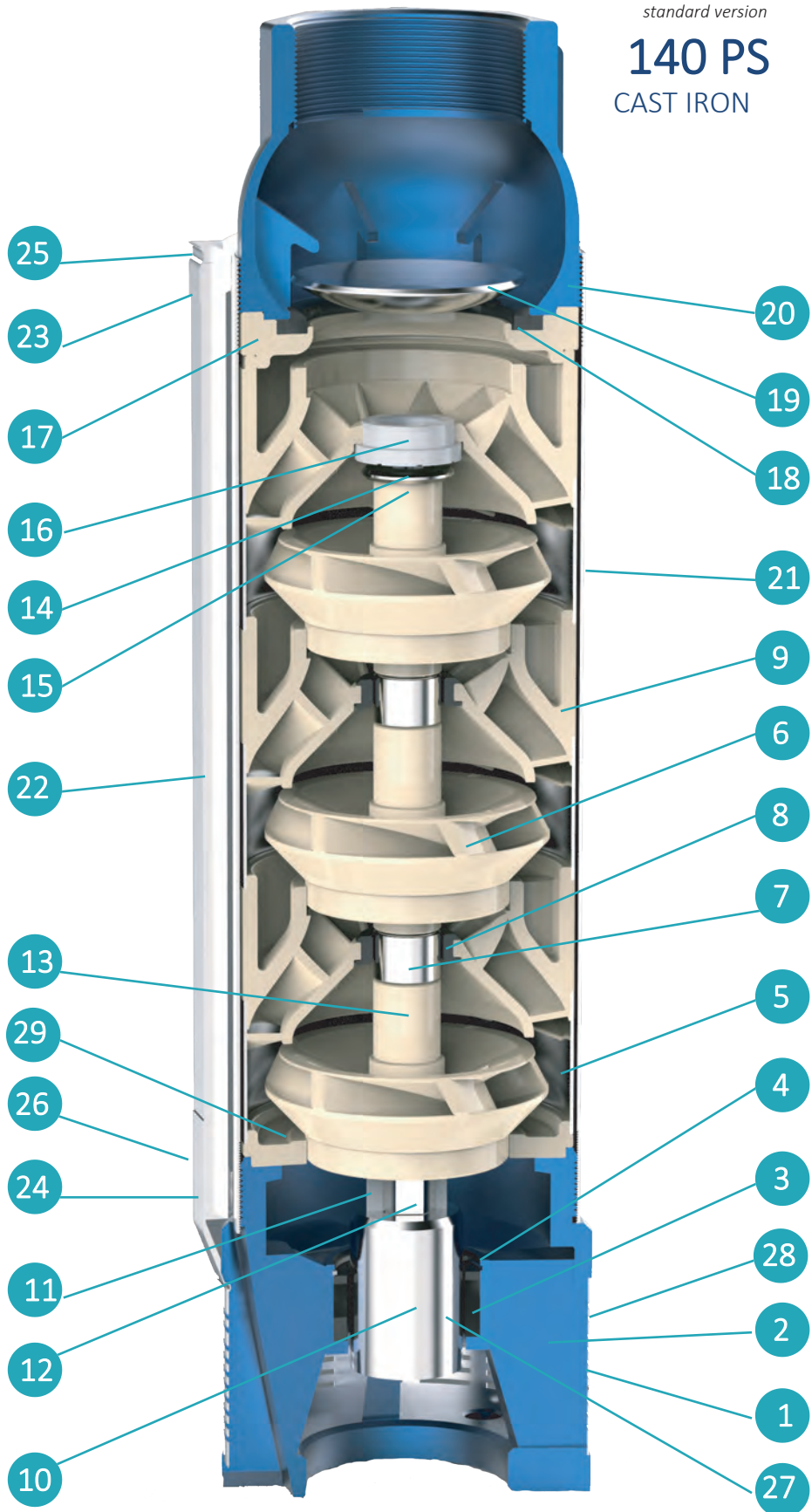
SPARE PARTS - 6" 140 PS/PSX

140 PSX
(AISI 304)



versione standard
standard version

140 PS
CAST IRON



SPARE PARTS - 6" 140 PS/PSX

140 PS				
N.CODE	DESCRIZIONE (Italiano)	MATERIALE (Italiano)	DESCRIPTION (English)	MATERIAL (English)
1	SUCCHERUOLA	ACCIAIO INOX AISI 304	SUCTION STRAINER	AISI 304
2 *	GABBIA DI ASPIRAZIONE	GHISA	SUCTION CAGE	CAST IRON
3	BRONZINA PER GABBIA	GOMMA	BEARING BUSH FOR SUCTION CAGE	RUBBER NBR
4	SEEGER BRONZINA	ACCIAIO INOX AISI 304	SEEGER BEARING BUSH	AISI 304
5	ELEMENTO INTERMEDIO	ACCIAIO INOX AISI 304	INTERMEDIATE CASING	AISI 304
6	GIRANTE	NORYL GFN2	IMPELLER	NORYL GFN2
7	DISTANZIATORE INTERMEDIO	ACCIAIO INOX AISI 304	INTERMEDIATE SPACER	AISI 304
8	BRONZINA DIFFUSORE	GOMMA	DIFFUSER BEARING BUSH	RUBBER NBR
9	DIFFUSORE	NORYL GFN2 + ACCIAIO INOX AISI 304	DIFFUSER	NORYL GFN2 + RING AISI 304
10	GIUNTO DI TRAINO	ACCIAIO INOX AISI 304	JOINT	AISI 304
11	DISTANZIATORE PRIMA GIRANTE	NORYL GFN2	SPACER FIRST IMPELLER	NORYL GFN2
12	ALBERO POMPA	ACCIAIO INOX AISI 420	PUMP SHAFT	AISI 420
13	DISTANZIATORE	NORYL GFN2	SPACER	NORYL GFN2
14	DISCO ACCIAIO	ACCIAIO INOX AISI 304	RING	AISI 304
15	VITE	ACCIAIO INOX AISI 304	SCREW	AISI 304
16	CONTROSOSPENSIONE	PTFE+25%CARBONE	COUNTERTHRUST	PTFE+25%CARBON
17	ANELLO GUARNIZIONE MANDATA	NORYL GFN2	RING GASKET VALVE	NORYL GFN2
18	GUARNIZIONE FARFALLA	GOMMA	GASKET VALVE	RUBBER NBR
19	FARFALLA	ACCIAIO INOX AISI 304	CAP VALVE	AISI 304
20 *	MANDATA	GHISA	DELIVERY BOWL	CAST IRON
21	CAMICIA	ACCIAIO INOX AISI 304	SLEEVE	AISI 304
22	COPRICAPO	ACCIAIO INOX AISI 304	COVER CABLE	AISI 304
23	STAFFETTA SUPERIORE	ACCIAIO INOX AISI 304	UPPER FLANGE	AISI 304
24	STAFFETTA INFERIORE	ACCIAIO INOX AISI 304	LOWER FLANGE	AISI 304
25	N.2 VITI M4 X 10 PER STAFFETTA SUPERIORE	ACCIAIO INOX AISI 304	N.2 SCREW M4X10 FOR UPPER FLANGE	AISI 304
26	N.2 VITI M4 X 10 PER STAFFETTA INFERIORE	ACCIAIO INOX AISI 304	N.2 SCREW M4X10 FOR LOWER FLANGE	AISI 304
27	GRANO PER GIUNTO	ACCIAIO INOX AISI 304	SCREW	AISI 304
28	N.2 VITI M4 X 8 PER SUCCHERUOLA	ACCIAIO INOX AISI 304	N.2 SCREW M4X8 SUCTION STRAINER	AISI 304
29	ANELLO RACCORDO GABBIA	NORYL GFN2 + ACCIAIO INOX AISI 304	RING FOR SUCTION CAGE	NORYL GFN2 + RING AISI 304

N.CODE	DESCRIPTION (Français)	MATÉRIEL (Français)	DESCRIPCIÓN (Español)	MATERIAL (Español)
1	CREPINE	ACIER INOXYDABLE AISI 304	REJILLA	ACERO INOXYDABLE AISI 304
2 *	CAGE D'ASPIRATION	FORGE	CUERPO DE ASPIRACION	HIERRO FUNDIDO
3	BEARING BUSH POUR CAGE D'ASPIRATION	CAOUTCHOUC	COJINETE CUERPO DE ASPIRACION	GOMA NBR
4	SEEGER BEARING BUSH	ACIER INOXYDABLE AISI 304	SEEGER POR COJINETE	ACERO INOXYDABLE AISI 304 ACERO
5	ELEMENT INTERMEDIARE	ACIER INOXYDABLE AISI 304	ELEMENTO INTERMEDIO	INOXYDABLE AISI 304
6	ROUE	NORYL GFN2	IMPULSOR	NORYL GFN2
7	ENTRETOISE INTERMEDIARE	ACIER INOXYDABLE AISI 304	DISTANCIADOR INTERMEDIO	ACERO INOXYDABLE AISI 304
8	DIFFUSEUR BEARING BUSH	CAOUTCHOUC	COJINETE DIFUSOR	GOMA NBR
9	DIFFUSEUR	NORYL GFN2 + ACIER INOXYDABLE AISI 304	DIFUSOR	NORYL GFN2 + ACERO INOXYDABLE AISI 304
10	JOINT	ACIER INOXYDABLE AISI 304	ACOPLAMIENTO	ACERO INOXYDABLE AISI 304
11	ENTRETOISE PREMIERE ROUE	NORYL GFN2	DISTANCIADOR PRIMER IMPULSOR	NORYL GFN2
12	ARBRE POMPE	ACIER INOXYDABLE AISI 420	EJE DE BOMBA	ACERO INOXYDABLE AISI 420
13	ENTRETOISE	NORYL GFN2	DISTANCIADOR	NORYL GFN2
14	RING	ACIER INOXYDABLE AISI 304	ANILLO EN ACERO	ACERO INOXYDABLE AISI 304
15	VIS	ACIER INOXYDABLE AISI 304	TORNILLO	ACERO INOXYDABLE AISI 304
16	CONTRESUSPENSION	PTFE + 25% GRAPHITE	CONTRA-SUSPENSION	PTFE+25%CARBON
17	ANNEAU VALVE GASKET	NORYL GFN2	JUNTA PARA VALVULA	NORYL GFN2
18	BAGUE VALVE GASKET	CAOUTCHOUC	JUNTA VALVULA	GOMA NBR
19	PLAT	ACIER INOXYDABLE AISI 304	VALVULA	ACERO INOXYDABLE AISI 304
20 *	REFOULEMENT	FORGE	CUERPO DE IMPULSION	HIERRO FUNDIDO
21	CHEMISE	ACIER INOXYDABLE AISI 304	CAMISA	ACERO INOXYDABLE AISI 304
22	PROTECTION CABLE	ACIER INOXYDABLE AISI 304	PARACABLE	ACERO INOXYDABLE AISI 304
23	BRIDE SUPERIEURE	ACIER INOXYDABLE AISI 304	GRAPA SUPERIOR	ACERO INOXYDABLE AISI 304
24	BRIDE INFERIEURE	ACIER INOXYDABLE AISI 304	GRAPA INFERIOR	ACERO INOXYDABLE AISI 304
25	N.2 VIS M4X10 POUR BRIDE SUPERIEURE	ACIER INOXYDABLE AISI 304	N.2 TORNILLOS GRAPA SUPERIOR	ACERO INOXYDABLE AISI 304
26	N.2 VIS M4X10 POUR BRIDE INFERIEURE	ACIER INOXYDABLE AISI 304	N.2 TORNILLOS GRAPA INFERIOR	ACERO INOXYDABLE AISI 304
27	VIS	ACIER INOXYDABLE AISI 304	TORNILLO POR ACOPLAMIENTO	ACERO INOXYDABLE AISI 304
28	N.2 VIS M4X8 POUR CREPINE	ACIER INOXYDABLE AISI 304	N.2 TORNILLOS REJILLA	ACERO INOXYDABLE AISI 304
29	ANNEAU FOR CAGE D'ASPIRATION	NORYL GFN2 + ACIER INOXYDABLE AISI 304	ANILLO CUERPO DE ASPIRACION	NORYL GFN2 + ACERO INOXYDABLE AISI 304

*** 140 PSX**

ACCIAIO INOX AISI 304
AISI 304
ACIER INOXYDABLE AISI 304 ACERO
INOXYDABLE AISI 304