



4" Semiaxial Impeller
High Capacity Submersible Pumps

Made in Italy





4" 95 PR / PRX / PRG / REC / SX 18 - HIGH CAPACITY SUBMERSIBLE PUMP WITH SEMIAXIAL IMPELLER

95 PR 18

Impeller in Technopolimer, Diffuser in Noryl, External Sleeve in AISI 304, Delivery bowl and suction cage in Brass

95 PRX 18

Impeller in Technopolimer, Diffuser in Noryl, External Sleeve in AISI 304, Delivery bowl and suction cage in stainless steel in AISI 304

95 PRG 18

Impeller in Technopolimer, Diffuser in Noryl, External Sleeve in AISI 304, Delivery bowl and suction cage in stainless steel in cast iron

95 REC 18

Impeller and diffuser in cast iron, pump shaft in AISI 304
Delivery bowl and suction cage in cast iron

95 SX 18

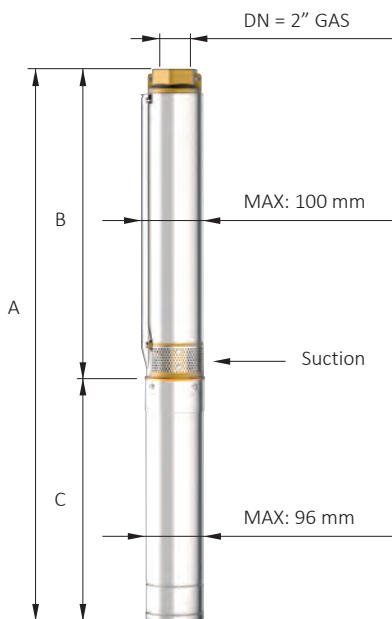
*Impeller and diffuser in AISI 304, pump shaft in AISI 304
Delivery bowl and suction cage in AISI 304*

High capacity: 24/27m³/h – 400/450 l/min



4" 95 PR18 / PRG18 / PRX18 - HYDRAULIC PERFORMANCES

Motor						50 Hz - 2900 rpm							Q = Capacity - Debit								
Type	Power		Single phase V230		V 400	l/min	0	150	200	250	300	350	400	0	150	200	250	300	350	400	
	kW	HP	A	μF	A	l/sec	H[m]														
							0	19	12,0	15	18	21	24	25	20	19	17	14	10	7	
95 PR18 N/04	1,10	1,5	9,6	40	3,1		25	20	19	17	14	10	7								
95 PR18 N/06	1,50	2	11,8	50	4		37	30	28	25	21	15	11								
95 PR18 N/09	2,20	3	15,2	75	5,8		55	45	42	37	31	23	17								
95 PR18 N/13	3	4	-	-	7,5		80	65	60	54	44	33	24								
95 PR18 N/17	4	5,5	-	-	9,8		104	85	79	70	58	44	31								
95 PR18 N/23	5,50	7,5	-	-	13,5		141	115	107	95	79	59	43								
95 PR18 N/32	7,50	10	-	-	17,5		196	160	148	132	109	82	59								



Type	Motor 50 Hz - 2900 rpm		Overall dimensions and weights						
	A mm Mono V230M	A mm Tri V400	B mm	C mm Mono	C mm Tri	M kg Mono	M kg Tri	P kg	
95 PR18 N/04	895	865	503	392	362	12	12	5	
95 PR18 N/06	1075	1045	653	422	392	13	13	6	
95 PR18 N/09	1345	1330	878	467	452	15	15	9	
95 PR18 N/13	-	1735	1178	-	557	-	19	13	
95 PR18 N/17	-	2075	1478	-	597	-	22	17	
95 PR18 N/23	-	2626	1928	-	698	-	27	23	
95 PR18 N/32	-	3421	2603	-	818	-	32	31	

n% = Pump efficiency W/st
= Stage absorption

Max 75%
Max 230



95 PR

Suction cage and delivery bowl in brass



95 PRG

Suction cage and delivery bowl in cast iron with CED (Cathode Electro Deposition)

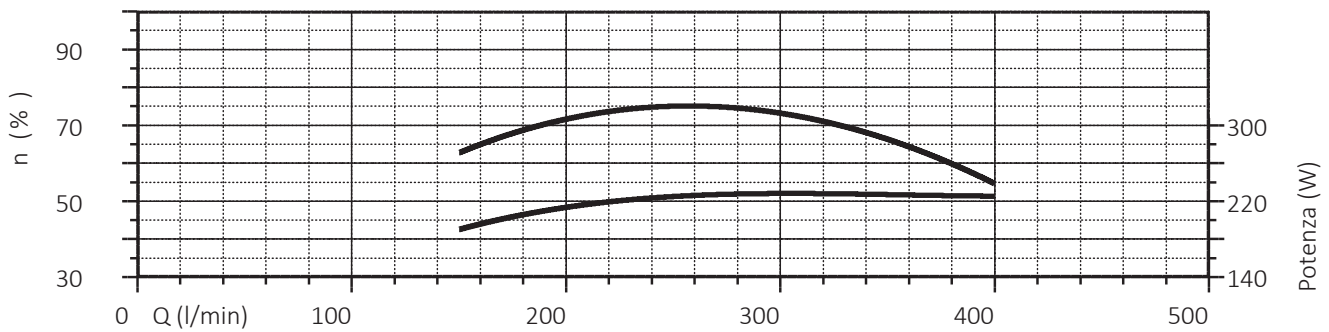
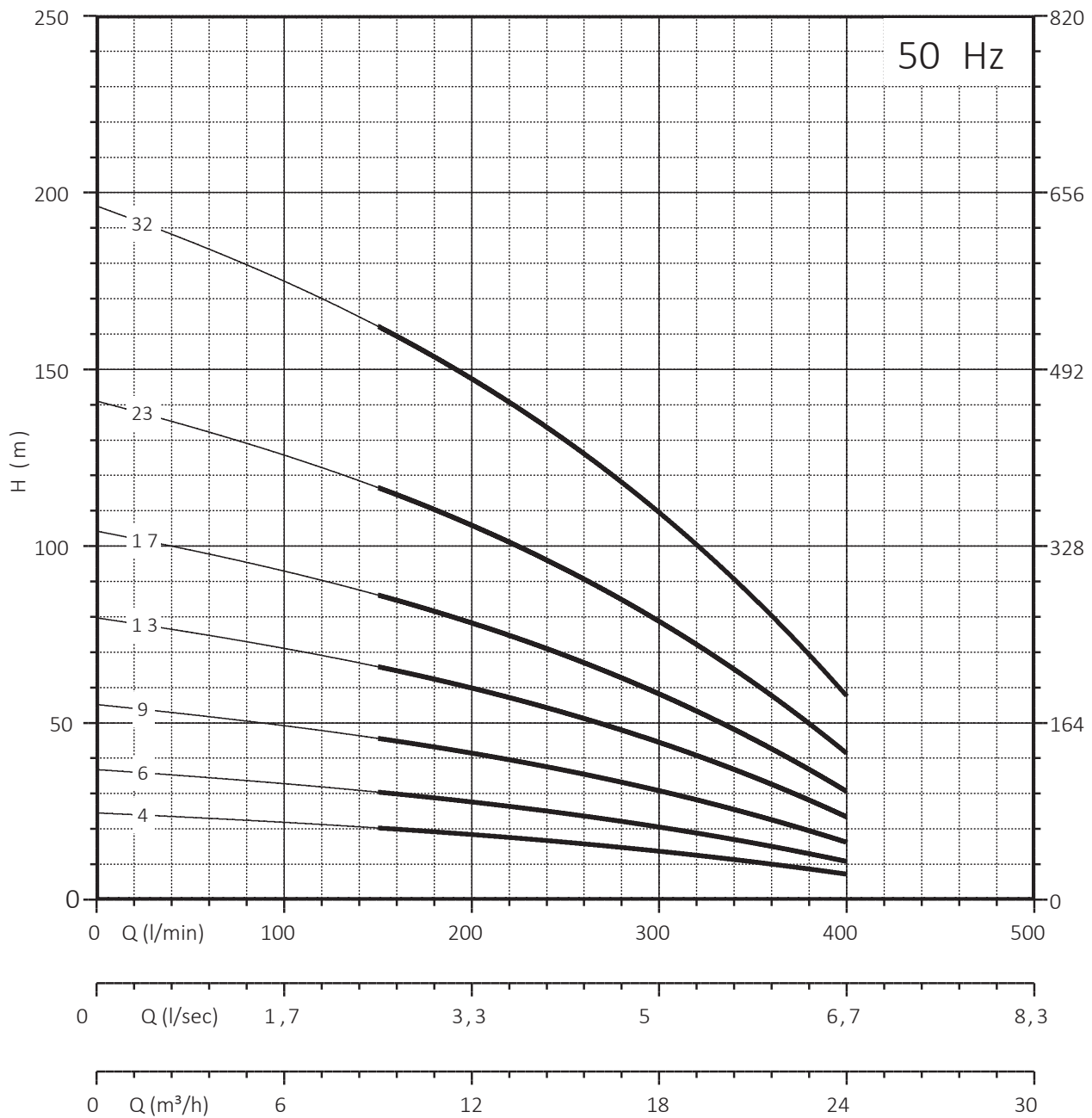


95 PRX

Suction cage and delivery bowl in AISI 304 casted



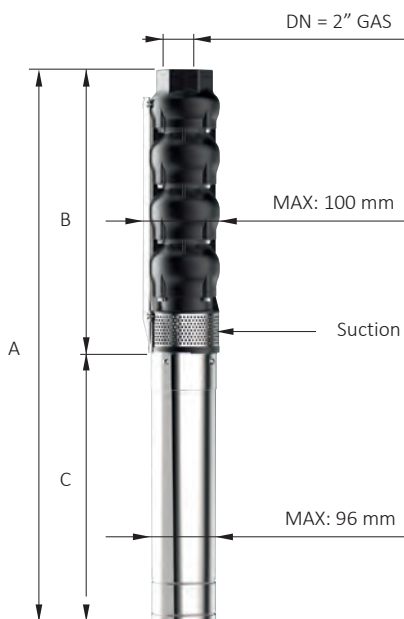
4" 95 PR18 / PRG18 / PRX18 - HYDRAULIC PERFORMANCES



NPSH (m)	25%	50%	75%	100%
95 PR 18 - 95 PRX 18 - 95 PRG 18	3	3	4	6

4" 95 REC 18 - HYDRAULIC PERFORMANCES

Motor						50 Hz - 2900 rpm							Q= Capacity - Debit						
Type	Power		Single phase V230		V 400	l/min	0	150	200	250	300	350	400						
	kW	HP	A	μF	A		l/sec	2,50	3,33	4,17	5	5,83	6,67						
							m³/h	0	9,0	12,0	15	18	21	24					
95 REC 18 /05	1,10	1,5	9,6	40	3,2	H[m]	29	23	21	18	15	12	8						
95 REC 18 /07	1,50	2	11,8	50	4		40	32	29	25	20	17	11						
95 REC 18 /10	2,20	3	15,2	75	5,8		57	46	41	36	29	24	15						
95 REC 18 /14	3	4	-	-	7,5		80	64	57	50	41	34	21						
95 REC 18 /19	4	5,5	-	-	9,8		108	86	78	67	55	46	29						
95 REC 18 /27	5,50	7,5	-	-	13,5		154	123	111	96	78	65	41						



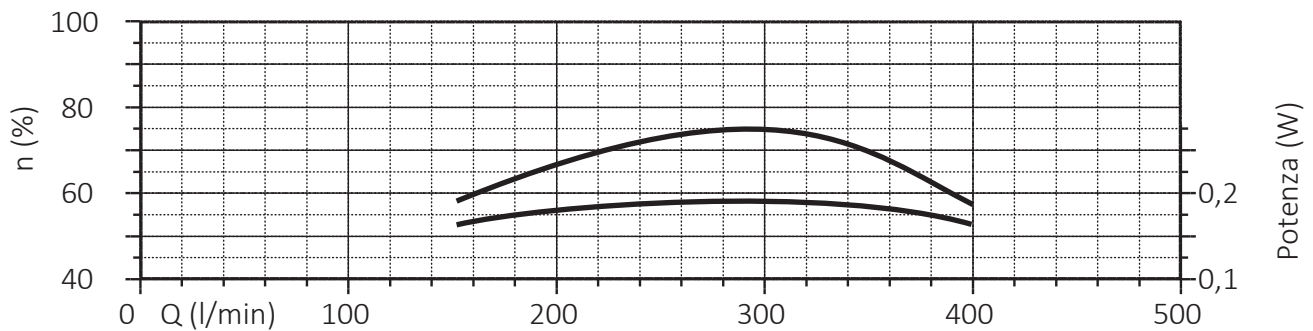
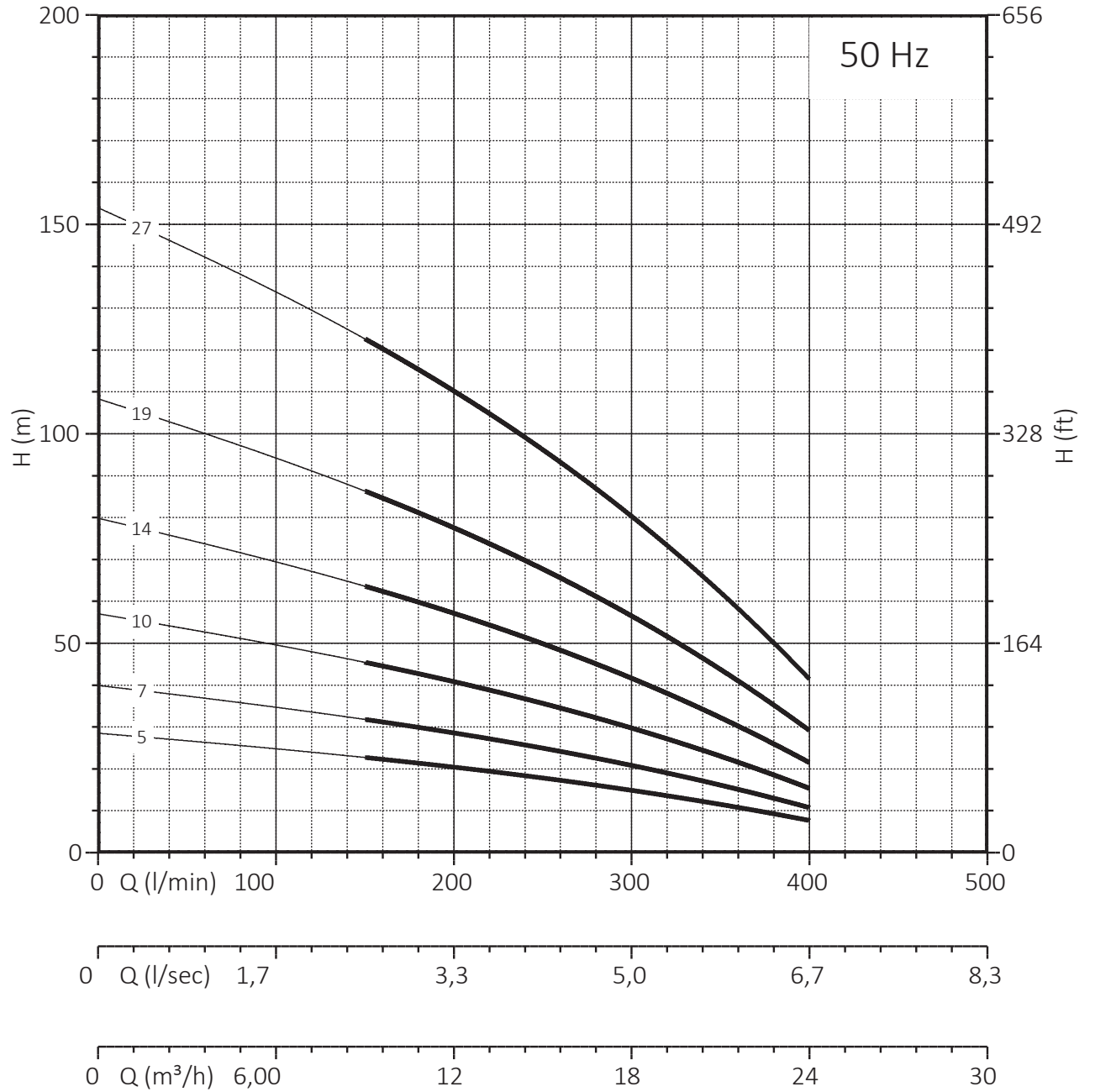
Motor 50 Hz - 2900 rpm	Overall dimensions and weights							
Tipo - Type	A mm Mono V230M	A mm Tri V400	B mm	C mm Mono	C mm Tri	M kg Mono	M kg Tri	P kg
95 REC 18 /05	930	900	538	392	362	12	12	7
95 REC 18 /07	1106	1076	684	422	392	13	13	10
95 REC 18 /10	1370	1355	903	467	452	15	15	13
95 REC 18 /14	-	1752	1195	-	557	-	19	17
95 REC 18 /19	-	2157	1560	-	597	-	22	23
95 REC 18 /27	-	2842	2144	-	698	-	27	31

n% = Pump efficiency
W/st = Stage absorption

Max 74,5%
Max 200

4" 95 REC 18 - HYDRAULIC PERFORMANCES

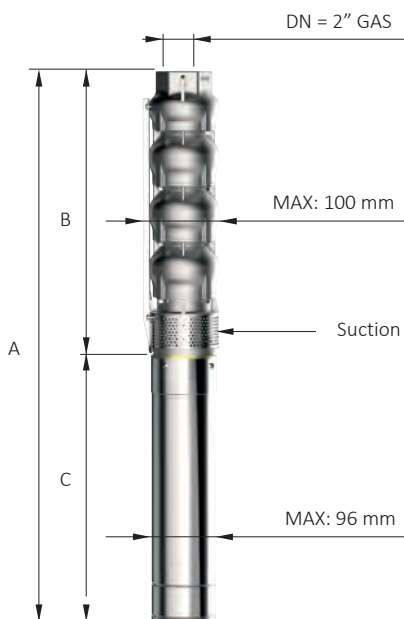
SERVICE FACTOR : 1,15



NPSH (m)	25%	50%	75%	100%
95 REC 18	3	3	4	6

4" 95 SX 18 - HYDRAULIC PERFORMANCES

Motor						50 Hz - 2900 rpm								Q= Capacity - Debit							
Type	Power		Single phase V230		V 400	l/min	0	150	200	250	300	350	400	450							
	kW	HP	A	µF	A		l/sec	0	2,50	3,33	4,17	5	5,83	6,67	7,50						
						m³/h	0	9	12	15	18	21	24	27							
95 SX 18/05	1,10	1,5	9,6	40	3,2	H[m]	27	24	21	19	16	13	9	5							
95 SX 18/07	1,50	2	11,8	50	4		38	33	29	27	22	18	13	7							
95 SX 18/11	2,20	3	15,2	75	5,8		59	52	46	42	35	29	20	11							
95 SX 18/15	3	4	-	-	7,5		81	71	63	57	48	39	27	15							
95 SX 18/20	4	5,5	-	-	9,8		108	94	84	76	64	52	36	20							
95 SX 18/27	5,50	7,5	-	-	13,5		146	127	113	103	86	70	49	27							



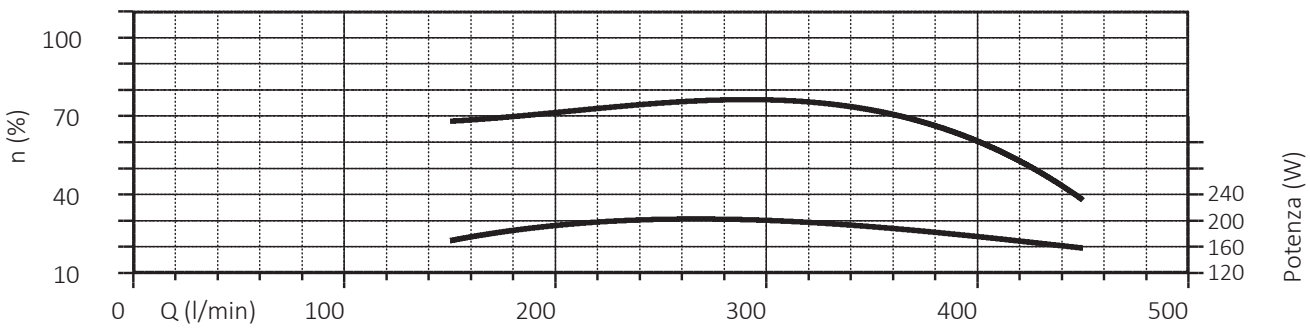
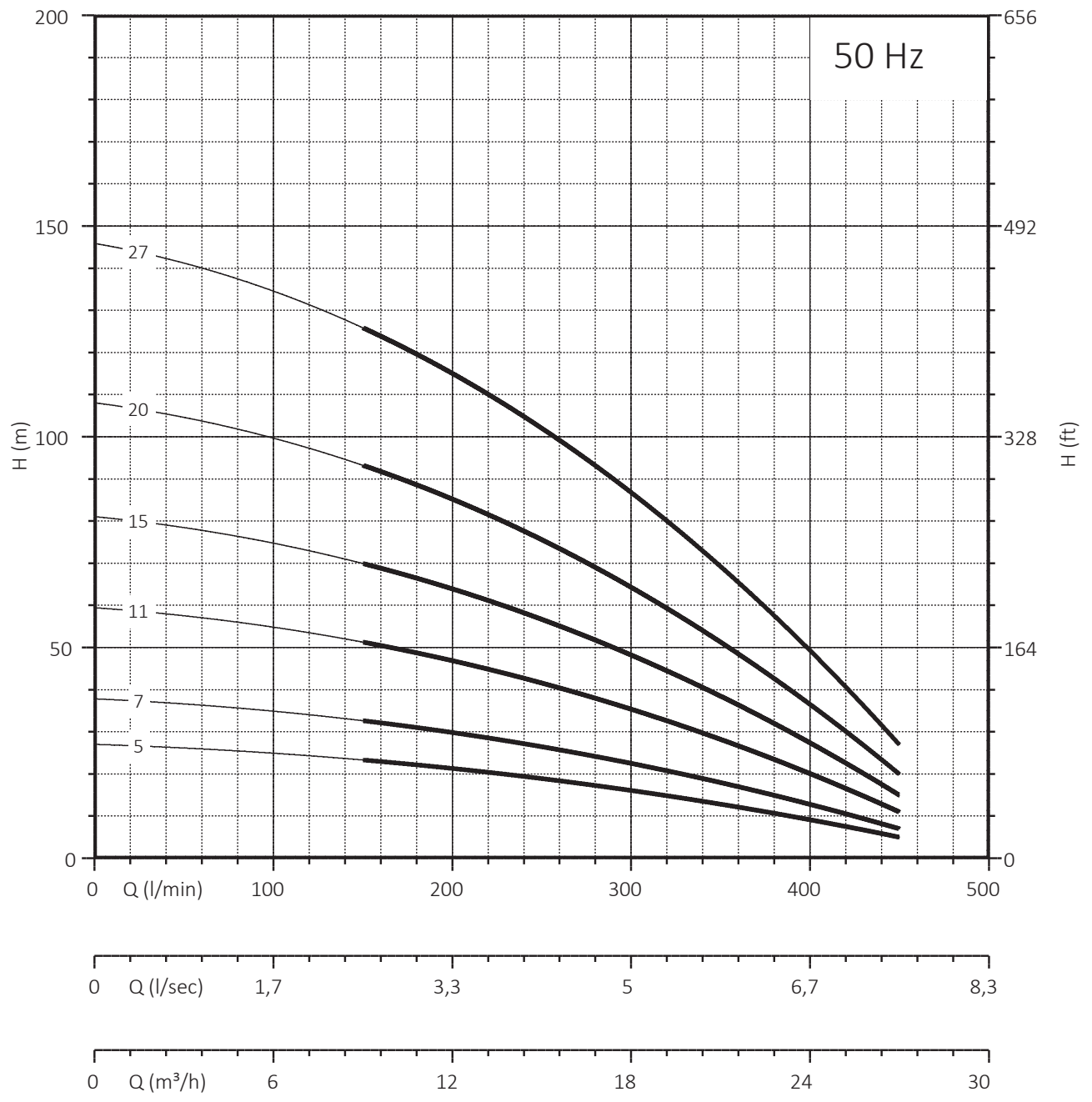
Motor 50 Hz - 2900 rpm	Overall dimensions and weights							
Type	A mm Mono V230M	A mm Tri V400	B mm	C mm	C mm Tri	M kg Mono	M kg Tri	P kg
95 SX 18/05	930	900	538	392	362	12	12	7
95 SX 18/07	1106	1076	684	422	392	13	13	10
95 SX 18/11	1443	1428	976	467	452	15	15	13
95 SX 18/15	-	1825	1268	-	557	-	19	17
95 SX 18/20	-	2230	1633	-	597	-	22	23
95 SX 18/27	-	2842	2144	-	698	-	27	31

n% = Pump efficiency
W/st = Stage absorption

Max 76,5%
Max 202

Massima quantità di sabbia ammessa: 50g/m³/Maximum sand content 50 g/m³
MEI ≥ 0,4 (direttiva EU No. 547/2012 - regulation EU N. 547/2012)
Tolleranze secondo UNI ISO 9906 livello 3B - Tolerances according to UNI ISO 9906 grade 3B

4" 95 SX 18 - HYDRAULIC PERFORMANCES

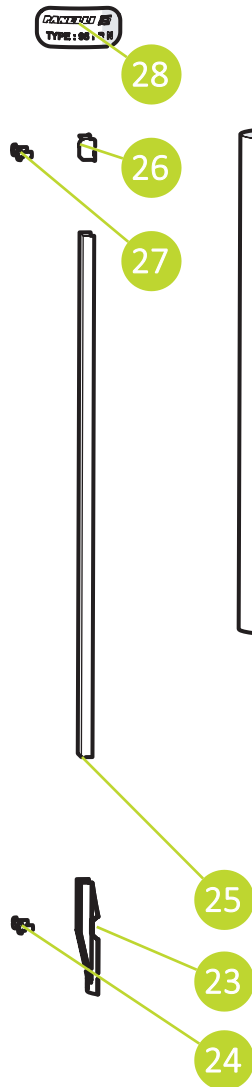
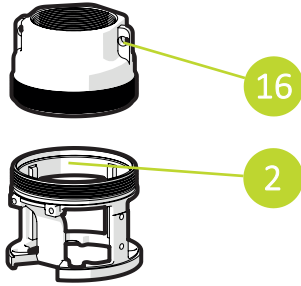


NPSH (m)	25%	50%	75%	100%
95 SX 18	3	3	4	6

SPARE PARTS 4" PR18 / PRG18 / PRX18

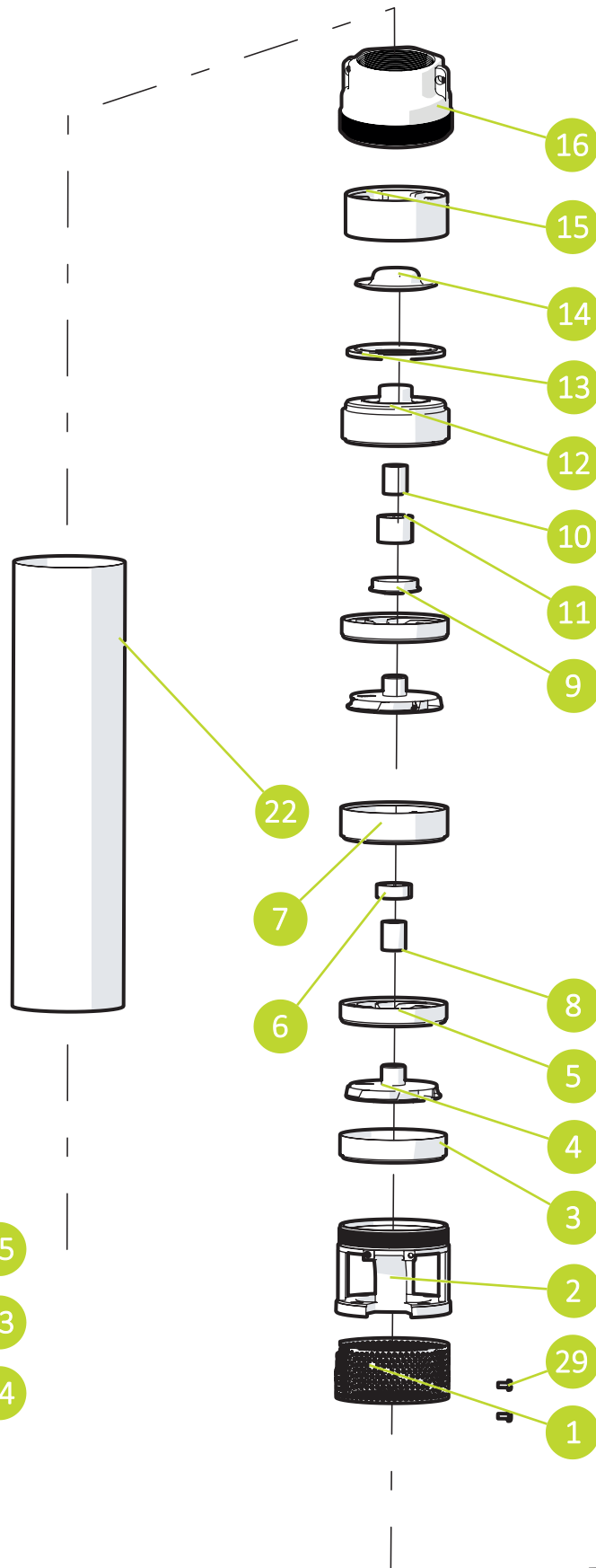
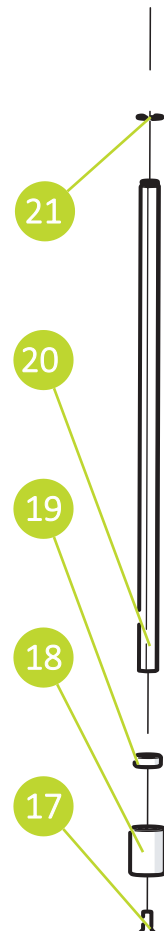
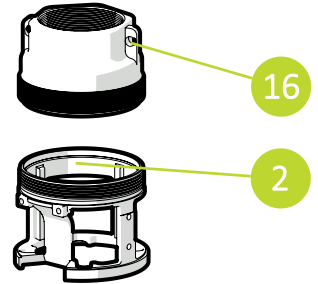
95 PRX

AISI 304



95 PRG

CAST IRON



SPARE PARTS 4" PR18 / PRG18 / PRX18



SPARE PARTS 4" PR18 / PRG18 / PRX18

95 PR 18				
N. CODE	DESCRIZIONE (Italiano)	MATERIALE (Italiano)	DESCRIPTION (English)	MATERIAL (English)
1	SUCCHERUOLA	ACCIAIO INOX AISI 304	SUCTION STRAINER	AISI 304
2 *	GABBIA DI ASPIRAZIONE	OTTONE	SUCTION CAGE	BRASS
3	DISCO RACCORDO GABBIA	NORYL + ACCIAIO	DISC CONNECTION CAGE	NORYL GFN2 + AISI 304
4	GIRANTE	POLICARBONATO	IMPELLER	POLYCARBONATE
5	ELEMENTO INTERMEDIO	ACCIAIO INOX AISI 304	INTERMEDIATE CASING	AISI 304
6	DIFFUSORE	NORYL + ACCIAIO	DIFFUSEUR	NORYL GFN2 + AISI 304
7	ANELLO RACCORDO SUPPORTO SUPERIORE	NORYL	UPPER SUPPORT CONNECTION RING	NORYL GFN2
8	DISTANZIATORE	POLICARBONATO	SPACER	POLYCARBONATE
9	PARASABBIA	NORYL	SAND GUARD	NORYL GFN2
10	DISTANZIATORE SUPPORTO SUPERIORE	ACCIAIO INOX AISI 304	SPACER UPPER SUPPORT	AISI 304
11	BRONZINA SUPPORTO SUPERIORE	GOMMA	UPPER BEARING BUSH	RUBBER NBR
12	SUPPORTO SUPERIORE	NORYL	UPPER SUPPORT	NORYL GFN2
13	GUARNIZIONE FARFALLA	GOMMA	GASLET VALVE	RUBBER NBR
14	FARFALLA	ACCIAIO INOX AISI 304	CAP VALVE	AISI 304
15	ANELLO RACCORDO MANDATA	NORYL	RING CONNECTOR DELIVERY BOWL	NORYL GFN2
16 *	MANDATA	OTTONE	DELIVERY BOWL	BRASS
17	VITE M6X12	ACCIAIO INOX AISI 304	SCREW M6X12	AISI 304
18	GIUNTO DI TRAINO FLOTTANTE	ACCIAIO INOX AISI 304	FLOATING JOINT	AISI 304
19	DISTANZIATORE PRIMA GIRANTE	POLICARBONATO	SPACER FIRST IMPELLER	POLYCARBONATE
20	ALBERO POMPA	ACCIAIO INOX AISI 420	PUMP SHAFT	AISI 420
21	SEEGER	ACCIAIO INOX AISI 304	SEEGER	AISI 304
22	CAMICIA	ACCIAIO INOX AISI 304	SLEEVE	AISI 304
23	STAFFETTA INFERIORE	ACCIAIO INOX AISI 304	LOWER FLANGE	AISI 304
24	N.2 VITI M4 X 10 PER STAFFETTA INFERIORE	ACCIAIO INOX AISI 304	N.2 SCREW M4X10 FOR LOWER FLANGE	AISI 304
25	COPRICAVO	ACCIAIO INOX AISI 304	COVER CABLE	AISI 304
26	STAFFETTA SUPERIORE	ACCIAIO INOX AISI 304	UPPER FLANGE	AISI 304
27	N.2 VITI M4 X 10 PER STAFFETTA SUPERIORE	ACCIAIO INOX AISI 304	N.2 SCREW M4X10 FOR UPPER FLANGE	AISI 304
28	ETICHETTA ADESIVA	POLIESTERE	ADHESIVE LABEL	POLYESTER
29	N.2 VITI M4 X 8 PER SUCCHERUOLA	ACCIAIO INOX AISI 304	N.2 SCREW M4X8 SUCTION STRAINER	AISI 304

N. CODE	DESCRIPTION (Français)	MATÉRIEL (Français)	DESCRIPCIÓN (Español)	MATERIAL (Español)
1	CREPINE	ACIER INOXYDABLE AISI 304	REJILLA	ACERO INOXYDABLE AISI 304
2 *	CAGE D'ASPIRATION	LAITON	CUERPO DE ASPIRACION	LATON
3	DISQUE DE RACCORD ASPIRATION	NORYL + ACCIER	ANILLO ACOPLAMIENTO	NORYL + ACERO
4	ROUE	TECHOPOLYMER	IMPULSOR	TECHOPOLIMERO
5	ELEMENT INTERMEDIARE	ACIER INOXYDABLE AISI 304	ELEMENTO INTERMEDIO	ACERO INOXYDABLE AISI 304
6	DIFFUSEUR	NORYL + ACCIER	DIFUSOR	NORYL + ACERO
7	BAGUE DE RCORD SUPPORT SUP.	NORYL	ANILLO ACOPLAM. SOPORTE SUPERIOR	NORYL
8	ENTRETOISE	TECHOPOLYMER	DISTANCIADOR	TECHOPOLIMERO
9	PARA SABLE	NORYL	PROTECTOR ARENA	NORYL
10	SUPPORT SUPERIEURE SPACER	ACIER INOXYDABLE AISI 304	DISTANCIADOR SOPORTE SUPERIOR	ACERO INOXYDABLE AISI 304
11	COUSSINET SUPPORT SUPERIEURE	CAOUTCHOU	COJINETE SOPORTE SUPERIOR	GOMA
12	SUPPORT SUPERIEURE	NORYL	SOPORTE SUPERIOR	NORYL
13	VALVE GASKET	CAOUTCHOU	JUNTA DE VALVULA	GOMA
14	PLAT	ACIER INOXYDABLE AISI 304	VALVULA	ACERO INOXYDABLE AISI 304
15	RING CONNECTEUR PLAT	NORYL	ANILLO ACOPLAMIENTO IMPULSION	NORYL
16 *	REFOULEMENT	LAITON	CUERPO DE IMPULSION	LATON
17	VIS M6X12	ACIER INOXYDABLE AISI 304	TORNILLO M6X12	ACERO INOXYDABLE AISI 304
18	JOINT FLOTTANT	ACIER INOXYDABLE AISI 304	ACOPLAMIENTO FLOTANTE	ACERO INOXYDABLE AISI 304
19	ENTRETOISE PREMIERE ROUE	POLICARBONATO	DISTANCIADOR PRIMER IMPULSOR	POLICARBONATO
20	ARBRE POMPE	ACIER INOXYDABLE AISI 420	EJE DE BOMBA	ACERO INOXYDABLE AISI 420
21	SEEGER	ACIER INOXYDABLE AISI 304	SEEGER	ACERO INOXYDABLE AISI 304
22	CHEMISE	ACIER INOXYDABLE AISI 304	CAMISA	ACERO INOXYDABLE AISI 304
23	BRIDE INFERIEURE	ACIER INOXYDABLE AISI 304	GRAPA INFERIOR	ACERO INOXYDABLE AISI 304
24	N.2 VIS POUR BRIDE INFERIEURE	ACIER INOXYDABLE AISI 304	N.2 TORNILLOS GRAPA INFERIOR	ACERO INOXYDABLE AISI 304
25	PROTECTION CABLE	ACIER INOXYDABLE AISI 304	PARACABLE	ACERO INOXYDABLE AISI 304
26	BRIDE SUPERIEURE	ACIER INOXYDABLE AISI 304	GRAPA SUPERIOR	ACERO INOXYDABLE AISI 304
27	N.2 VIS POUR BRIDE SUPERIEURE	ACIER INOXYDABLE AISI 304	N.2 TORNILLOS GRAPA SUPERIOR	ACERO INOXYDABLE AISI 304
28	ADHESIVE ÉTIQUETTE	PLASTIQUE	ETIQUETA	PLASTICO
29	N.2 VIS POUR CREPINE	ACIER INOXYDABLE AISI 304	N.2 TORNILLOS REJILLA	ACERO INOXYDABLE AISI 304

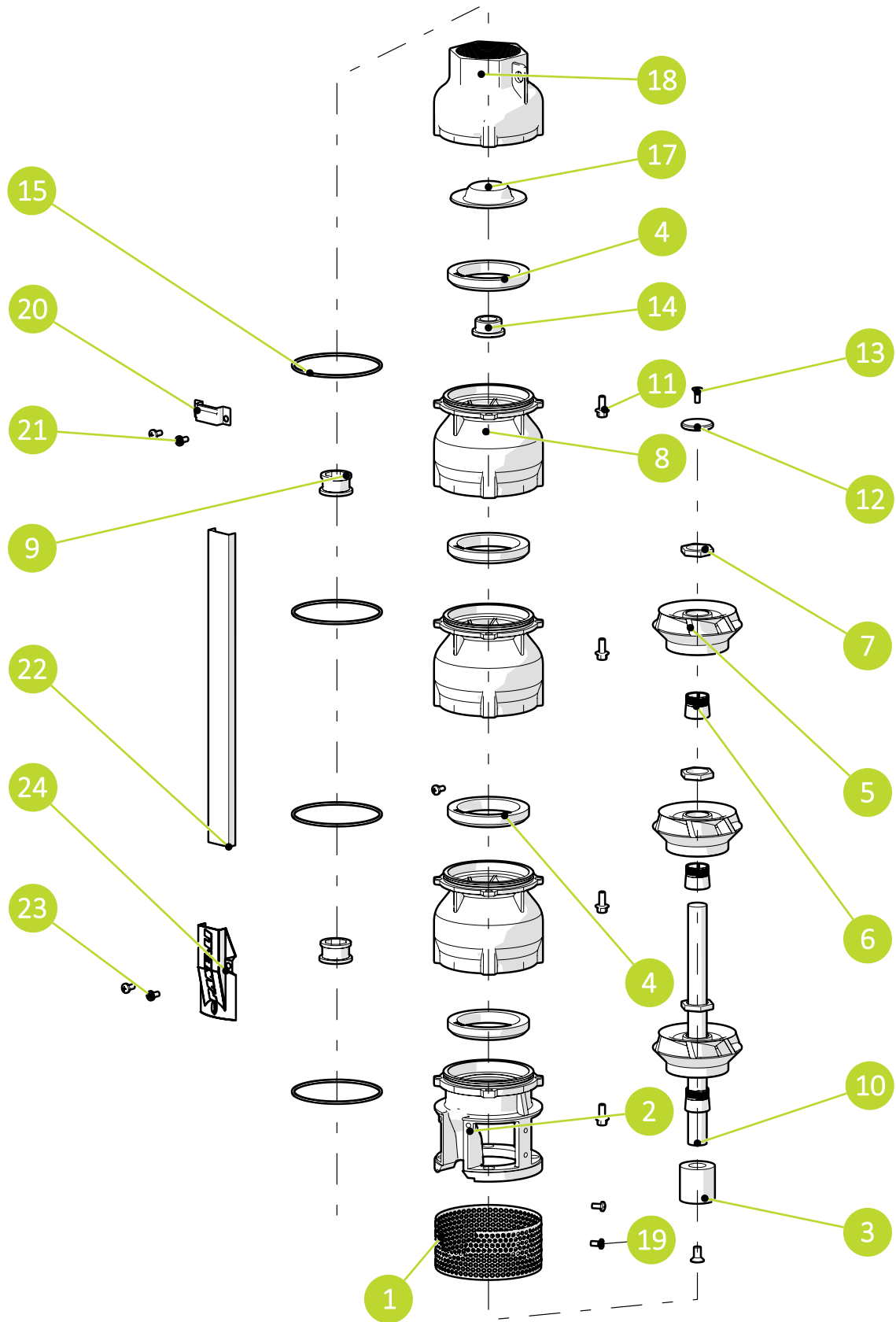
* 95 PRX 18

ACCIAIO INOX AISI 304
AISI 304
ACIER INOXYDABLE AISI 304 ACERO
INOXYDABLE AISI 304

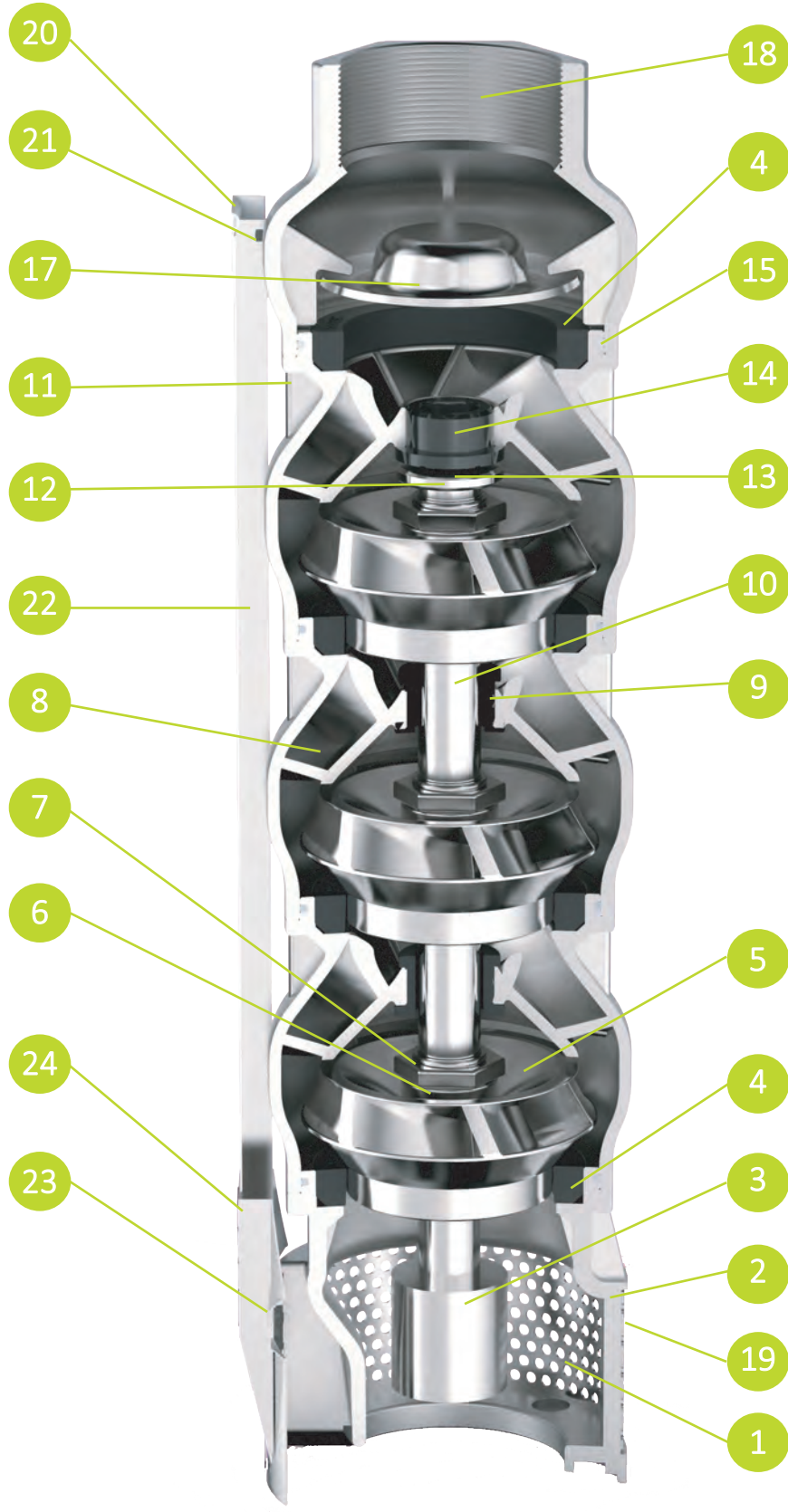
* 95 PRG 18

GHISA
CAST IRON
FONTE
HIERRO FUNDIDO

SPARE PARTS OF 4" SX18 / REC18



SPARE PARTS OF 4" SX18 / REC18



SPARE PARTS OF 4" SX18 / REC18

95 SX 18				
N.CODE	DESCRIZIONE (Italiano)	MATERIALE (Italiano)	DESCRIPTION (English)	MATERIAL (English)
1	SUCCHERUOLA	ACCIAIO INOX AISI 304	SUCTION STRAINER	AISI 304
2 *	GABBIA DI ASPIRAZIONE	ACCIAIO INOX AISI 304	SUCTION CAGE	AISI 304
3	GIUNTO	ACCIAIO INOX AISI 304	JOINT	AISI 304
4	ANELLO USURA	GOMMA	USURY RING	NBR
5 *	GIRANTE	ACCIAIO INOX AISI 304	IMPELLER	AISI 304
6	CONO	ACCIAIO INOX AISI 304	CONE	AISI 304
7	GHIERA	ACCIAIO INOX AISI 304	HEXAGONAL RING	AISI 304
8 *	DIFFUSORE	ACCIAIO INOX AISI 304	DIFFUSEUR	AISI 304
9	BRONZINA	GOMMA	BEARING BUSH	NBR
10	ALBERO POMPA	ACCIAIO INOX AISI 304	PUMP SHAFT	AISI 304
11	N.4 VITI PER DIFFUSORE	ACCIAIO INOX AISI 304	N.4 SCREW FOR DIFFUSEUR	AISI 304
12	DISCO ACCIAIO	ACCIAIO INOX AISI 304	RING	AISI 304
13	VITE DISCO ACCIAIO	ACCIAIO INOX AISI 304	SCREW FOR DISK	AISI 304
14	CONTROSOSPENSIONE	PTFE + 25% CARBONE	COUNTERTHRUST	PTFE + 25 CARBON
15	O-RING	GOMMA	O-RING	NBR
4	GUARNIZIONE FARFALLA	GOMMA	GASKET VALVE	NBR
17	FARFALLA	ACCIAIO INOX AISI 304	CAP VALVE	AISI 304
18 *	MANDATA	ACCIAIO INOX AISI 304	DELIVERY BOWL	AISI 304
19	N.2 VITI PER SUCCHERUOLA	ACCIAIO INOX AISI 304	N.2 SCREW FOR SUCTION STRAINER	AISI 304
20	STAFFETTA SUPERIORE	ACCIAIO INOX AISI 304	UPPER FLANGE	AISI 304
21	N.2 VITI STAFFETTA SUPERIORE	ACCIAIO INOX AISI 304	N.2 SCREW FOR UPPER FLANGE	AISI 304
22	COPRICAVO	ACCIAIO INOX AISI 304	COVER CABLE	AISI 304
23	N.2 VITI STAFFETTA INFERIORE	ACCIAIO INOX AISI 304	N.2 SCREW FOR LOWER FLANGE	AISI 304
24	STAFFETTA INFERIORE	ACCIAIO INOX AISI 304	LOWER FLANGE	AISI 304

N.CODE	DESCRIPTION (Français)	MATÉRIEL (Français)	DESCRIPCIÓN (Español)	MATERIAL (Español)
1	CREPINE	ACIER INOXYDABLE AISI 304	REJILLA	ACERO INOXYDABLE AISI 304
2 *	CAGE D'ASPIRATION	ACIER INOXYDABLE AISI 304	CUERPO DE ASPIRACION	ACERO INOXYDABLE AISI 304
3	JOINT	ACIER INOXYDABLE AISI 304	ACOPLAMIENTO	ACERO INOXYDABLE AISI 304
4	BAGUE D'USURE	CAOUTCHOUC	ANILLO DE DESGASTE	GOMA
5 *	ROUE	ACIER INOXYDABLE AISI 304	IMPULSOR	ACERO INOXYDABLE AISI 304
6	CONO	ACIER INOXYDABLE AISI 304	CONO	ACERO INOXYDABLE AISI 304
7	BAGUE	ACIER INOXYDABLE AISI 304	ANILLO HEXAGONAL	ACERO INOXYDABLE AISI 304
8 *	DIFFUSEUR	ACIER INOXYDABLE AISI 304	DIFUSOR	ACERO INOXYDABLE AISI 304
9	COUSSINET	CAOUTCHOUC	COJINETE	GOMA
10	ABRE POMPE	ACIER INOXYDABLE AISI 304	EJE DE BOMBA	ACERO INOXYDABLE AISI 304
11	N.4 VIS POUR DIFFUSEUR	ACIER INOXYDABLE AISI 304	N4.TORNILLOS DIFUSOR	ACERO INOXYDABLE AISI 304
12	RING	ACIER INOXYDABLE AISI 304	ANILLO EN ACERO	ACERO INOXYDABLE AISI 304
13	VIS RING	ACIER INOXYDABLE AISI 304	TORNILLO POR ANILLO EN ACERO	ACERO INOXYDABLE AISI 304
14	CONTRESUSPENSION	PTFE + 25% GRAPHITE	CONTRA-SUSPENSION	PTFE + 25% GRAPHITE
15	O-RING	CAOUTCHOUC	ANILLO TOROIDAL	GOMA
4	GASKET VALVE	CAOUTCHOUC	JUNTA DE VALVULA	GOMA
17	PLAT	ACIER INOXYDABLE AISI 304	VALVULA	ACERO INOXYDABLE AISI 304
18 *	REFOULEMENT	ACIER INOXYDABLE AISI 304	CUERPO DE IMPULSION	ACERO INOXYDABLE AISI 304
19	N.2 VIS POUR CREPINE	ACIER INOXYDABLE AISI 304	N.2 TORNILLOS REJILLA	ACERO INOXYDABLE AISI 304
20	BRIDE SUPERIEURE	ACIER INOXYDABLE AISI 304	GRAPA SUPERIOR	ACERO INOXYDABLE AISI 304
21	N.2 VIS POUR BRIDE SUPERIEURE	ACIER INOXYDABLE AISI 304	N.2 TORNILLOS GRAPA SUPERIOR	ACERO INOXYDABLE AISI 304
22	PROTECTOR CABLE	ACIER INOXYDABLE AISI 304	PARACABLE	ACERO INOXYDABLE AISI 304
23	N.2 VIS POUR BRIDE INFERIEURE	ACIER INOXYDABLE AISI 304	N.2 TORNILLOS GRAPA INFERIOR	ACERO INOXYDABLE AISI 304
24	BRIDE INFERIEURE	ACIER INOXYDABLE AISI 304	GRAPA INFERIOR	ACERO INOXYDABLE AISI 304

* 95 REC 18

GHISA G25
 CAST IRON G25 FONTE
 G25
 HIERRO FUNDIDO G25